
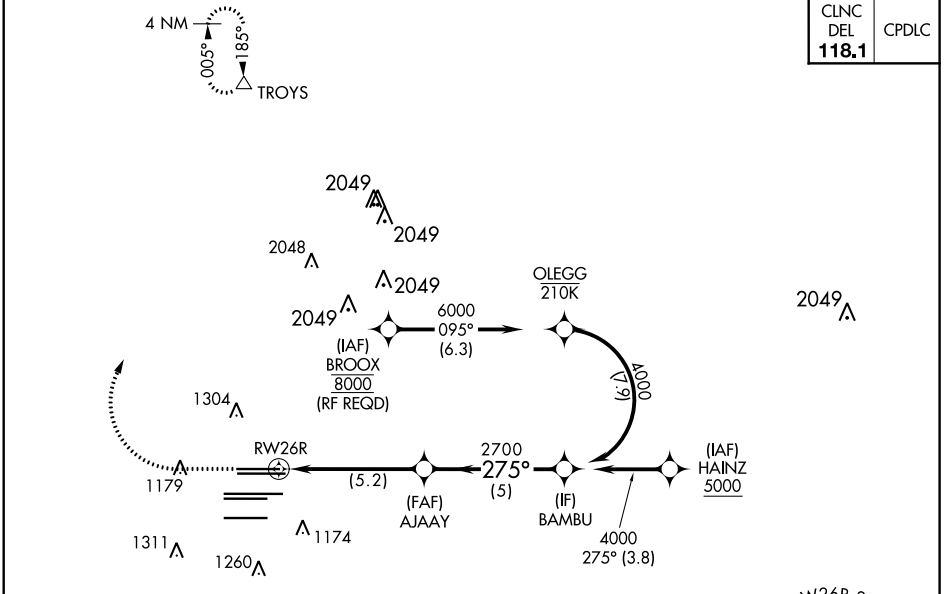


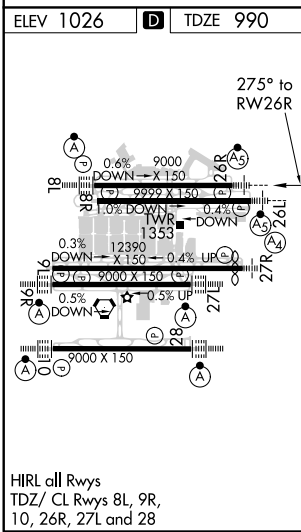
APP CRS	Rwy Idg	8500
275°	TDZE	990
	Apt Elev	1026

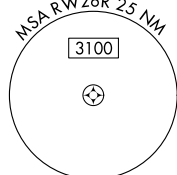
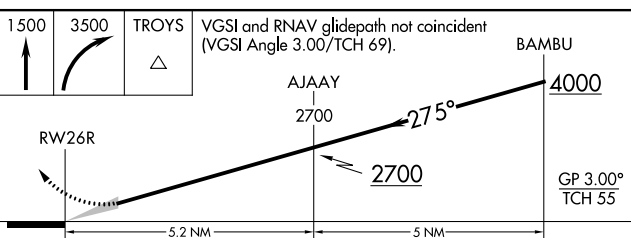
RNAV (RNP) Z RWY 26R
HARTSFIELD-JACKSON ATLANTA INTL (ATL)

<p>For uncompensated Baro-VNAV systems, procedure NA below -8°C (18°F) or above 54°C (130°F). GPS required. Simultaneous approach authorized. Arrival from BROOX NA during simultaneous triple approaches.</p>					<p>MALSR</p> 		<p>MISSED APPROACH: Climb to 1500 then climbing right turn to 3500 direct TROYS and hold.</p>					
D-ATIS	ATLANTA	ATLANTA TOWER				ALL	GND CON		ALL			
ARR 119.65	APP CON	8L-26R	8R-26L	9L-27R	9R-27L	10-28	RWYS	(8L-26R,8R-26L)	(9L-27R,9R-27L)	10-28	RWYS	
DEP 125.55	127.9	379.9	119.1	125.325	123.85	119.3	119.5	254.4	121.9	121.75	121.65	254.4



CLNC DEL	CPDLC
118.1	



ELEV 1026	D	TDZE 990		
				
1500	3500	TROYS	VGSI and RNAV glidepath not coincident (VGSI Angle 3.00/TCH 69).	
		BAMBUB	4000	
RWY 26R		AJAAY	2700	
RWY 26R		2700	275°	
RWY 26R		2700	2700	
5.2 NM		5 NM	GP 3.00° TCH 55	
CATEGORY	A	B	C	D
RNP 0.30 DA	1402/45		412 (400-1)	
AUTHORIZATION REQUIRED				

SE-4, 16 JUN 2022 to 14 JUL 2022

SE-4, 16 JUN 2022 to 14 JUL 2022