


# RNAV (GPS) PRM Y RWY 26R (SIMULTANEOUS CLOSE PARALLEL) HARTSFIELD-JACKSON ATLANTA INTL (ATL)

WAAS CH <b>61000</b> <b>W26B</b>	APP CRS <b>275°</b>	Rwy Idg TDZE <b>990</b> Apt Elev <b>1026</b>	<b>8500</b>
--	------------------------	--	-------------

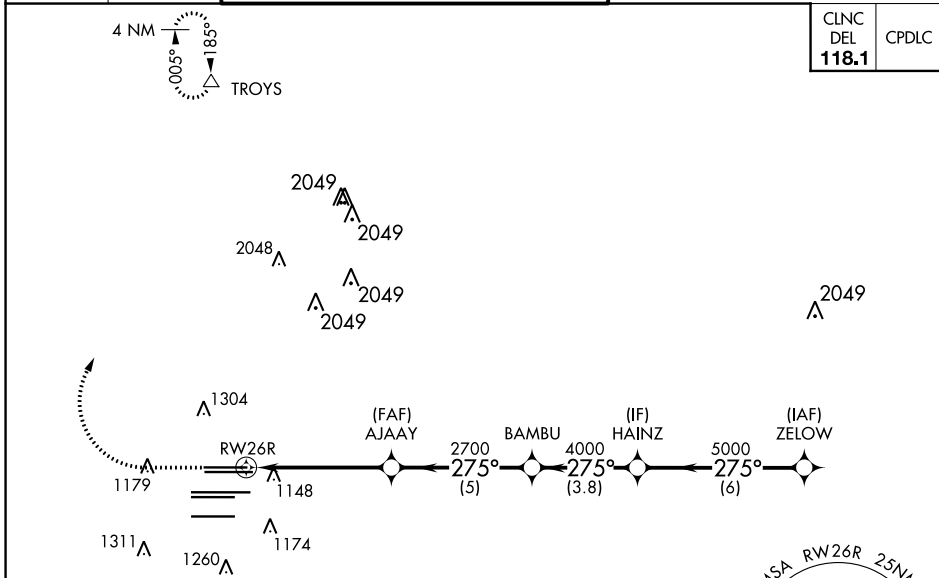
▼ For uncompensated Baro-VNAV systems, LNAV/VNAV NA below -7°C (20°F) or above 54°C (130°F). DME/DME RNP-0.3 NA. Simultaneous close parallel approach authorized with ILS PRM and RNAV PRM RWY 27R or 27L or 28, or Rwys 27R and 28, or Rwys 27L and 28. Use of FD or AP providing RNAV track guidance required during simultaneous operations. Dual VHF comm required. See additional requirements on AAUP.

MALSR



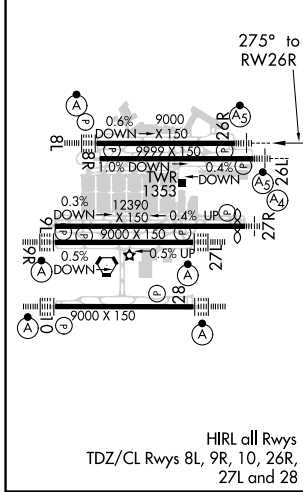
MISSED APPROACH: Climb to 1500 then climbing right turn to 3500 direct TROYS and hold.

D-ATIS ARR <b>119.65</b> DEP <b>125.55</b>	ATLANTA APP CON <b>127.9 379.9</b>	ATLANTA TOWER 8L-26R 8R-26L <b>119.1 125.325</b> 9L-27R 9R-27L <b>123.85 119.3</b> 10-28 <b>119.5 254.4</b> PRM <b>126.9</b>	ALL RWYS <b>121.9</b>	GND CON (8L-26R,8R-26L) <b>121.75</b> (9L-27R,9R-27L) <b>121.65</b> 10-28 <b>254.4</b>	ALL RWYS
--	--	--	-----------------------------	---	-------------

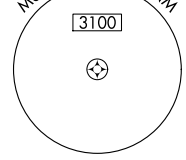
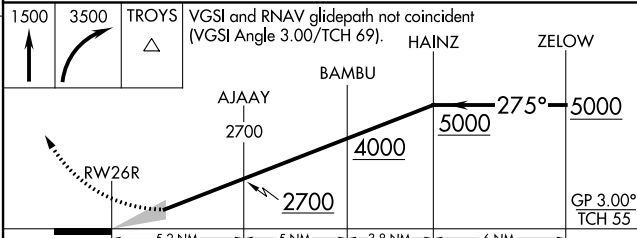


CLNC DEL <b>118.1</b>	CPDLC
-----------------------------	-------

ELEV 1026	<b>D</b>	TDZE 990
-----------	----------	----------



**RADAR REQUIRED**

CATEGORY	A	B	C	D
LPV DA		1190/18	200 (200-½)	
LNAV/VNAV DA		1426/50	436 (500-1)	

# RNAV (GPS) PRM Y RWY 26R (SIMULTANEOUS CLOSE PARALLEL)

SE-4, 16 JUN 2022 to 14 JUL 2022

SE-4, 16 JUN 2022 to 14 JUL 2022