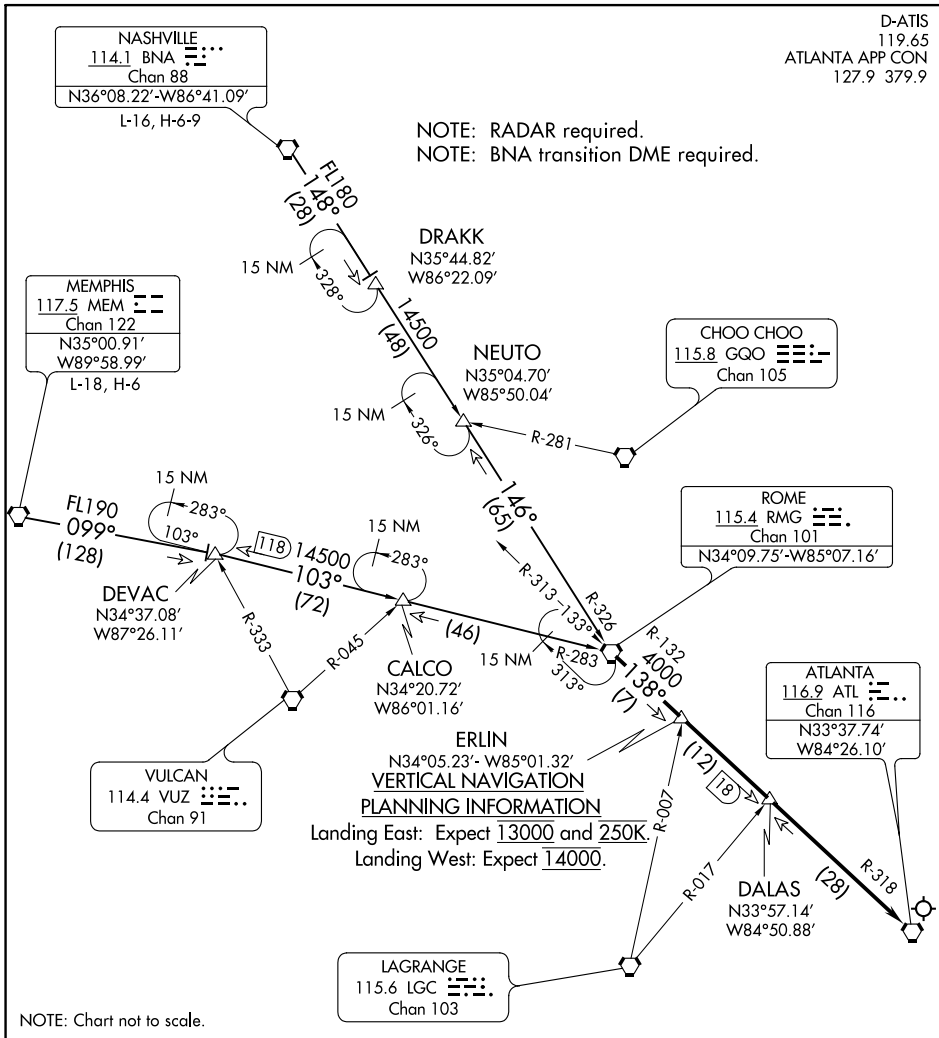


AL-26 (FAA)

D-ATIS
 119.65
 ATLANTA APP CON
 127.9 379.9

NOTE: RADAR required.
 NOTE: BNA transition DME required.



SE-4, 16 JUN 2022 to 14 JUL 2022

SE-4, 16 JUN 2022 to 14 JUL 2022

NOTE: Chart not to scale.

ARRIVAL ROUTE DESCRIPTION

MEMPHIS TRANSITION (MEM.RMG6): From over MEM VORTAC on MEM R-099 to DEVAC, then on RMG R-283 to RMG VORTAC. Thence. . .

NASHVILLE TRANSITION (BNA.RMG6): From over BNA VORTAC on BNA R-148 to DRACK, then on RMG R-326 to RMG VORTAC. Thence. . .

. . . From over RMG VORTAC on ATL R-318 to ATL VORTAC. Expect RADAR vectors to final approach course after DALAS.