

WAAS CH 97400 W09B	APP CRS 095°	Rwy Idg TDZE 1026 Apt Elev 1026
--	------------------------	---

RNAV (GPS) RWY 9R

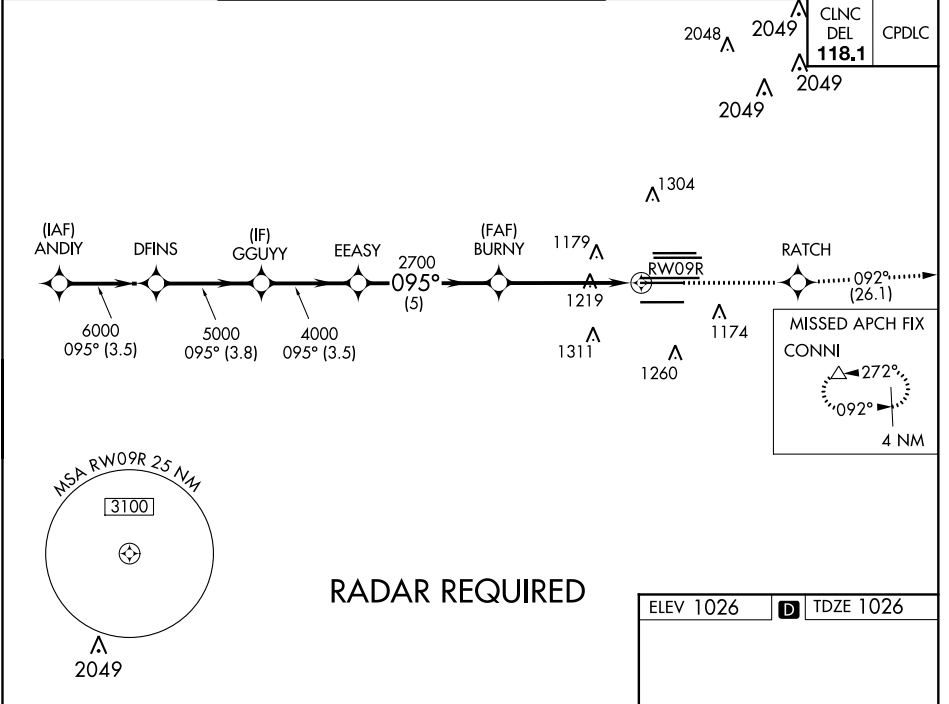
HARTSFIELD-JACKSON ATLANTA INTL (ATL)

▽ For uncompensated Baro-VNAV systems, LNAV/VNAV NA below -7°C (20°F) or above 54°C (130°F). DME/DME RNP-0.3 NA. Simultaneous approach authorized with Rwy 8L or 8R. LNAV procedure NA during simultaneous operations. Use of FD or AP providing RNAV track guidance required during simultaneous operations.

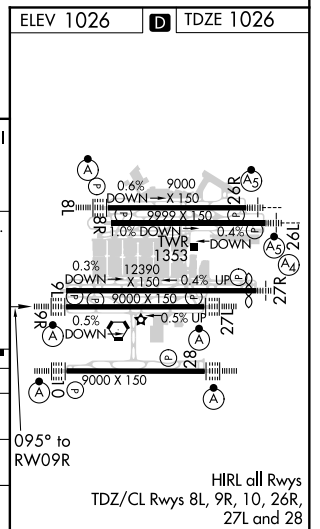
ALSF-2

 MISSED APPROACH: Climb to 4000 direct RATCH and on track 092° to CONNI and hold.

D-ATIS ARR 119.65	ATLANTA APP CON	ATLANTA TOWER					ALL RWYS	GND CON	ALL RWYS
DEP 125.55	127.9 379.9	8L-26R	8R-26L	9L-27R	9R-27L	10-28	(8L-26R,8R-26L)	(9L-27R,9R-27L)	10-28
		119.1	125.325	123.85	119.3	119.5	121.9	121.65	121.65 254.4



VGSi and RNAV glidepath not coincident (VGSi Angle 3.00/TCH 70).		4000	RATCH	tr 092°	CONNI
ANDIY	DFINS	GGUYY	EEASY	BURNY	CONNI
7000	6000	5000	4000	2700	2700
GP 3.00° TCH 56				*1.2 NM to RWY09R	*LNAV only.
	3.5 NM	3.8 NM	3.5 NM	5 NM	3.9 NM
CATEGORY	A	B	C	D	
LPV DA		1226/18	200 (200-½)		
LNAV/VNAV DA		1403/40	377 (500-¾)		
LNAV MDA	1480/24	454 (500-½)	1480/45	454 (500-⅞)	



SE-4, 16 JUN 2022 to 14 JUL 2022

SE-4, 16 JUN 2022 to 14 JUL 2022