

WAAS CH 62800 W09D	APP CRS 095°	Rwy Idg TDZE 1019 Apt Elev 1026	11730
--	------------------------	---	--------------

RNAV (GPS) RWY 9L

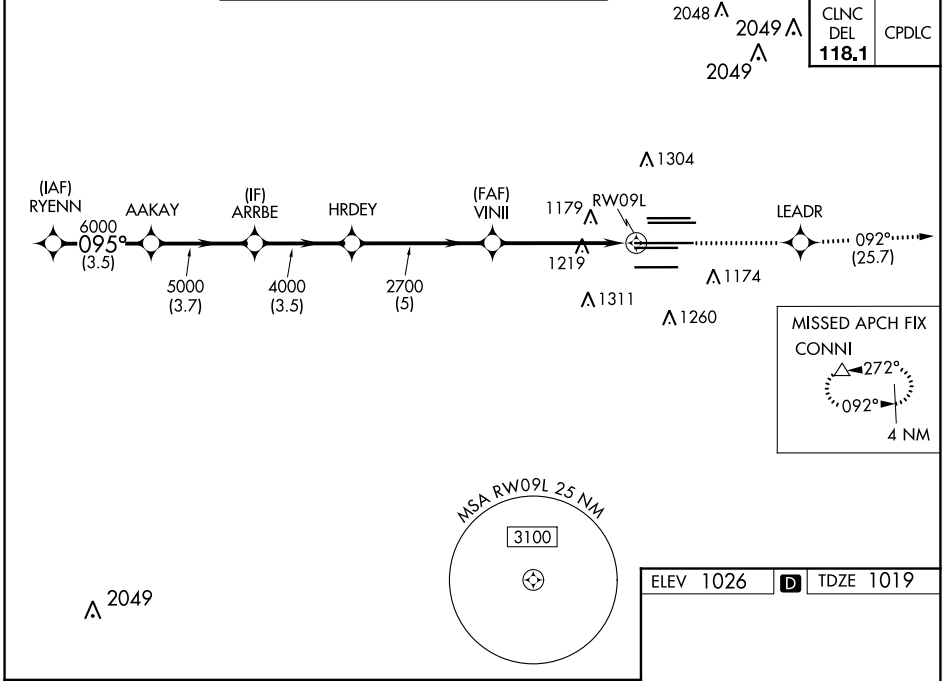
HARTSFIELD-JACKSON ATLANTA INTL (ATL)

RNP APCH.

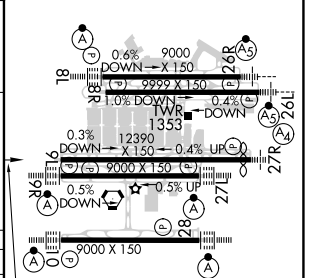
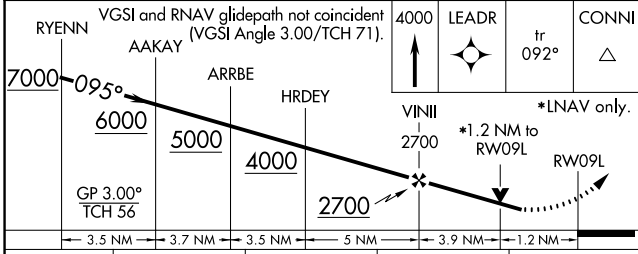
▼ For uncompensated Baro-VNAV systems, LNAV/VNAV NA below -7°C or above 54°C. Rwy 9L helicopter visibility reduction below RVR 4000 NA. Simultaneous approach authorized with Rwy 8L or 8R or 10, or Rwy 8L and 10. LNAV procedure NA during simultaneous operations. Use of FD or AP providing RNAV track guidance required during simultaneous operations.

MISSED APPROACH: Climb to 4000 direct LEADR and on track 092° to CONNI and hold.

D-ATIS ARR 119.65	ATLANTA APP CON	ATLANTA TOWER				ALL RWYS	GND CON	ALL RWYS
DEP 125.55	127.9 379.9	8L-26R	8R-26L	9L-27R	9R-27L	10-28	(8L-26R,8R-26L) (9L-27R,9R-27L)	10-28
		119.1	125.325	123.85	119.3	119.5	121.9	121.75 121.65 254.4



ELEV 1026	D	TDZE 1019
-----------	----------	-----------



CATEGORY	A	B	C	D
LPV DA		1359/50	340 (400-1)	
LNAV/VNAV DA		1405/60	386 (400-1¼)	
LNAV MDA	1480/55	461 (500-1)	1480-1¾	461 (500-1¾)

095° to RWY 9L

HIRL all Rwys
TDZ/CL Rwys 8L, 9R,
10, 26R, 27L and 28

SE-4, 16 JUN 2022 to 14 JUL 2022

SE-4, 16 JUN 2022 to 14 JUL 2022