

WAAS CH 65700 W27A	APP CRS 275°	Rwy Idg TDZE 999 Apt Elev 1026
--	------------------------	--

RNAV (GPS) RWY 27L

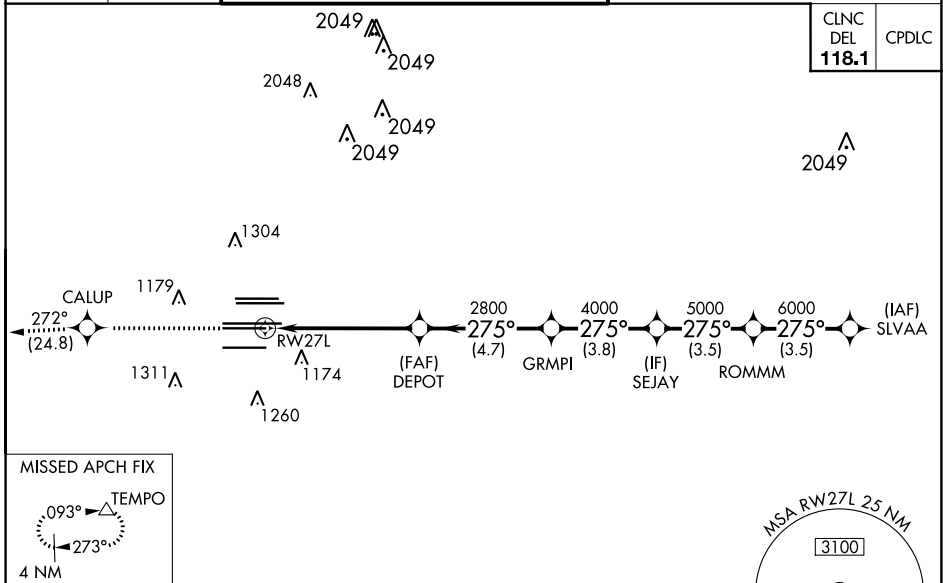
HARTSFIELD-JACKSON ATLANTA INTL (ATL)

▼ For uncompensated Baro-VNAV systems, LNAV/VNAV NA below -7°C (20°F) or above 54°C (130°F). DME/DME RNP-0.3 NA. Simultaneous approach authorized with Rwy 26R or 26L. LNAV procedure NA during simultaneous operations. Use of FD or AP providing RNAV track guidance required during simultaneous operations.

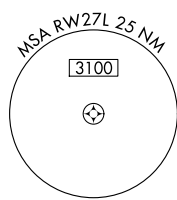
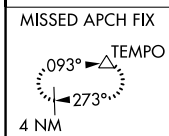


MISSED APPROACH: Climb to 4000 direct CALUP and on track 272° to TEMPO and hold.

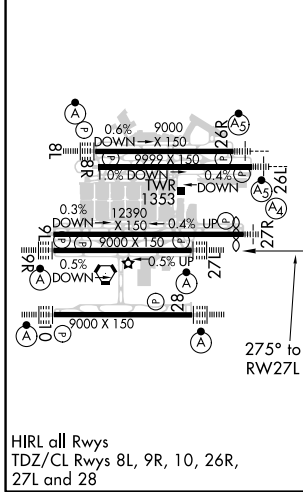
D-ATIS ARR 119.65	ATLANTA APP CON 127.9 379.9	ATLANTA TOWER 8L-26R 8R-26L 9L-27R 9R-27L 10-28 RWYS 119.1 125.325 123.85 119.3 119.5 254.4				ALL RWYS 121.9	GND CON (8L-26R,8R-26L) (9L-27R,9R-27L) 10-28 RWYS 121.75 121.65 254.4
-----------------------------	--	--	--	--	--	-----------------------------	---



CLNC DEL 118.1	CPDLC
-----------------------------	-------



ELEV 1026	D	TDZE 999
-----------	----------	----------



ATLANTA, GEORGIA
Amdt 5A 12OCT17

RADAR REQUIRED

4000	CALUP	tr 272°	TEMPO	VGSI and RNAV glidepath not coincident (VGSI Angle 3.00/TCH 79).				
*LNAV only.				DEPOT	GRMPI	SEJAY	ROMMM	SLVAA
RWY 27L				2800	4000	5000	6000	7000
1.7 NM				3.8 NM	4.7 NM	3.8 NM	3.5 NM	3.5 NM
CATEGORY	A	B	C	D				
LPV DA	1199/18			200 (200-½)				
LNAV/VNAV DA	1528-1¾			529 (600-1¾)				
LNAV MDA	1620/24		621 (600-½)		1620-1¾			621 (600-1¾)

SE-4, 16 JUN 2022 to 14 JUL 2022

SE-4, 16 JUN 2022 to 14 JUL 2022