

WAAS CH 56300 W26A	APP CRS 275°	Rwy Idg TDZE 996 Apt Elev 1026	9999
--	------------------------	--	-------------

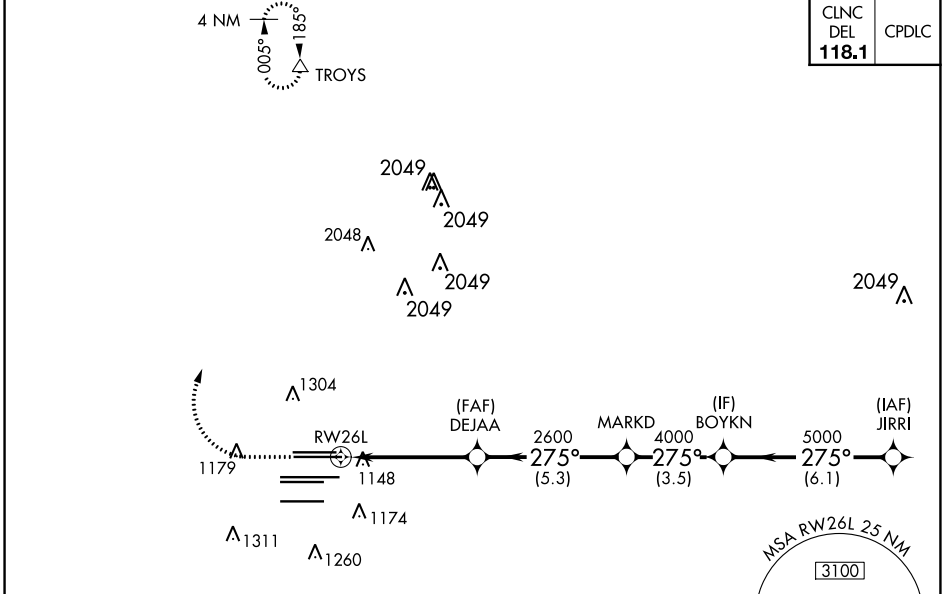
RNAV (GPS) RWY 26L
HARTSFIELD-JACKSON ATLANTA INTL (ATL)

▽ For uncompensated Baro-VNAV systems, LNAV/VNAV NA below -7°C (20°F) or above 54°C (130°F). DME/DME RNP-0.3 NA. For inop MALSR, increase LPV all Cats visibility to RVR 4500, LNAV/VNAV all Cats visibility to RVR 6000. Simultaneous approach authorized with Rwy 27L or 27R or 28. LNAV procedure NA during simultaneous operations. Use of FD or AP providing RNAV track guidance required during simultaneous operations.



MISSED APPROACH:
Climb to 1500 then climbing right turn to 3500 direct TROYS and hold.

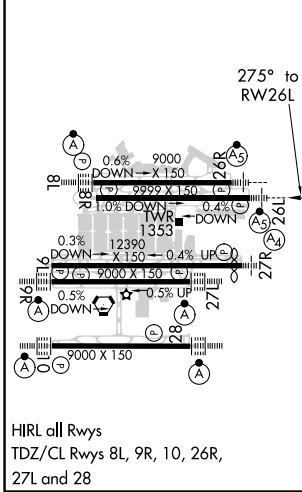
D-ATIS ARR 119.65	ATLANTA APP CON DEP 125.55	ATLANTA TOWER 8L-26R 125.325 8R-26L 123.85 9L-27R 119.3 9R-27L 119.5 10-28 254.4	ALL RWYS 121.9	GND CON (8L-26R,8R-26L) (9L-27R,9R-27L) 10-28 121.75 121.65 254.4	ALL RWYS
-----------------------------	---	--	-----------------------------	---	-------------



CLNC DEL	CPDLC
118.1	

ELEV 1026	D	TDZE 996
-----------	----------	----------

RADAR REQUIRED



1500	3500	TROYS	VGSi and RNAV glidepath not coincident (VGSi Angle 3.00/TCH 63).		
↑	↷	△	BOYKN	JIRRI	
*LNAV only.		MARKD	DEJAA	JIRRI	
*1.3 NM to RWY 26L		2600	4000	5000	
RWY 26L		2600	4000	5000	
1.3		3.6 NM	5.3 NM	3.5 NM	6.1 NM
CATEGORY	A	B	C	D	
LPV	DA	1281/24	285 (300-½)		
LNAV/VNAV	DA	1360/35	364 (400-⅝)		
LNAV MDA	1460/24	464 (500-½)	1460/50	464 (500-1)	

SE-4, 16 JUN 2022 to 14 JUL 2022

SE-4, 16 JUN 2022 to 14 JUL 2022