

OZZI ONE ARRIVAL (RNAV) Transition Routes

ATLANTA, GEORGIA

SE-4, 16 JUN 2022 to 14 JUL 2022

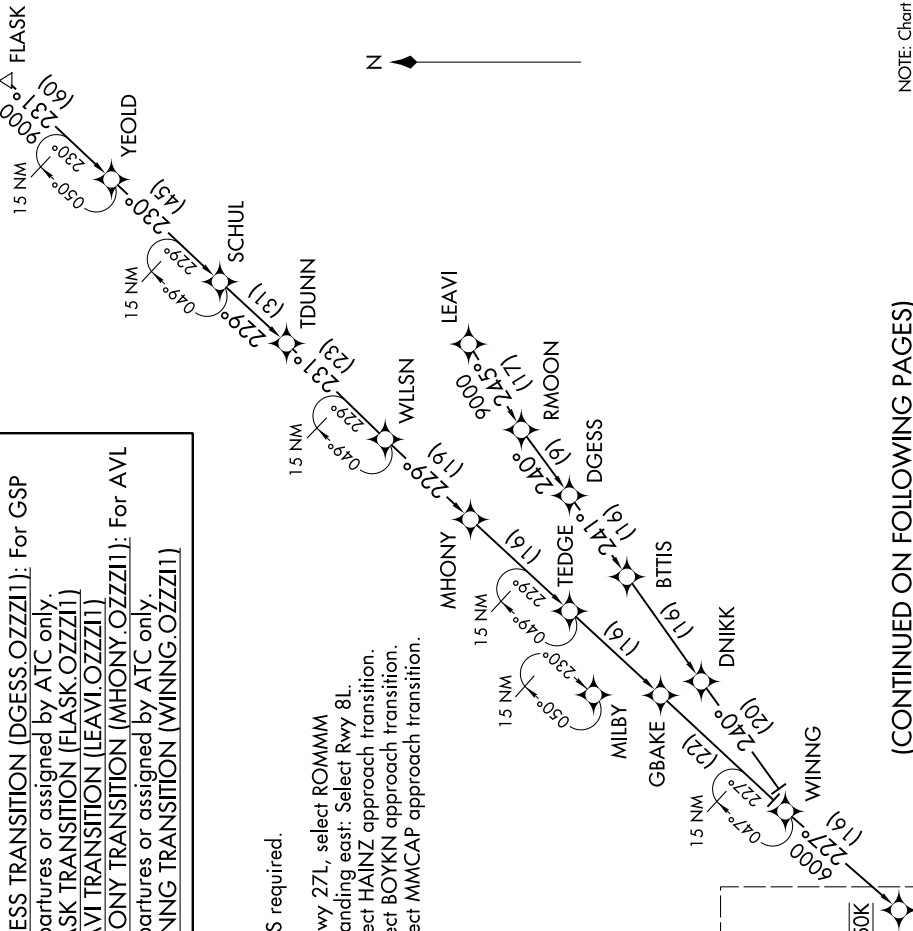
DGESS TRANSITION (DGESS.OZZI1): For GSP departures or assigned by ATC only.  
 FLASK TRANSITION (FLASK.OZZI1)  
 LEAVI TRANSITION (LEAVI.OZZI1)  
 MHONY TRANSITION (MHONY.OZZI1): For AVL departures or assigned by ATC only.  
 WINING TRANSITION (WINING.OZZI1)

D-ATIS ARR  
 119.65  
 ATLANTA APP CON  
 128.525 379.9

NOTE: RADAR required.  
 NOTE: RNAV 1.  
 NOTE: DME/DME/IRU or GPS required.  
 NOTE: Turbojet aircraft only.  
 NOTE: Landing west: Select Rwy 27L, select ROMMM approach transition; Landing east: Select Rwy 8L.  
 NOTE: Landing Rwy 26R: Select HAINZ approach transition.  
 NOTE: Landing Rwy 26L: Select BOYKN approach transition.  
 NOTE: Landing Rwy 27R: Select MMCAP approach transition.

See following page for Arrival Routes.

OZZI  
 Landing East: Expect 14000  
 Landing West: Expect 12000 and 250K



(CONTINUED ON FOLLOWING PAGES)

SE-4, 16 JUN 2022 to 14 JUL 2022

NOTE: Chart not to scale.

OZZI ONE ARRIVAL (RNAV) Transition Routes

ATLANTA, GEORGIA