

# ILS PRM RWY 9L (CLOSE PARALLEL)

HARTSFIELD-JACKSON ATLANTA INTL (ATL)

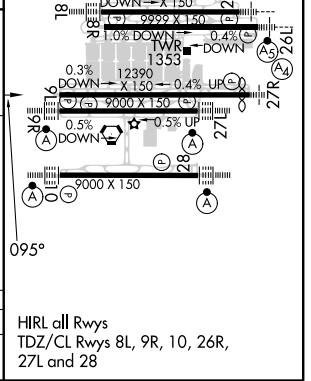
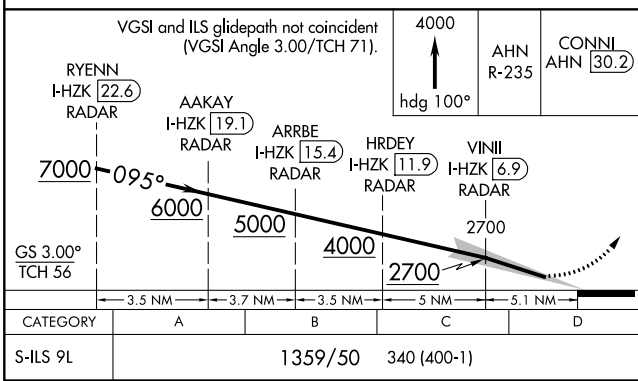
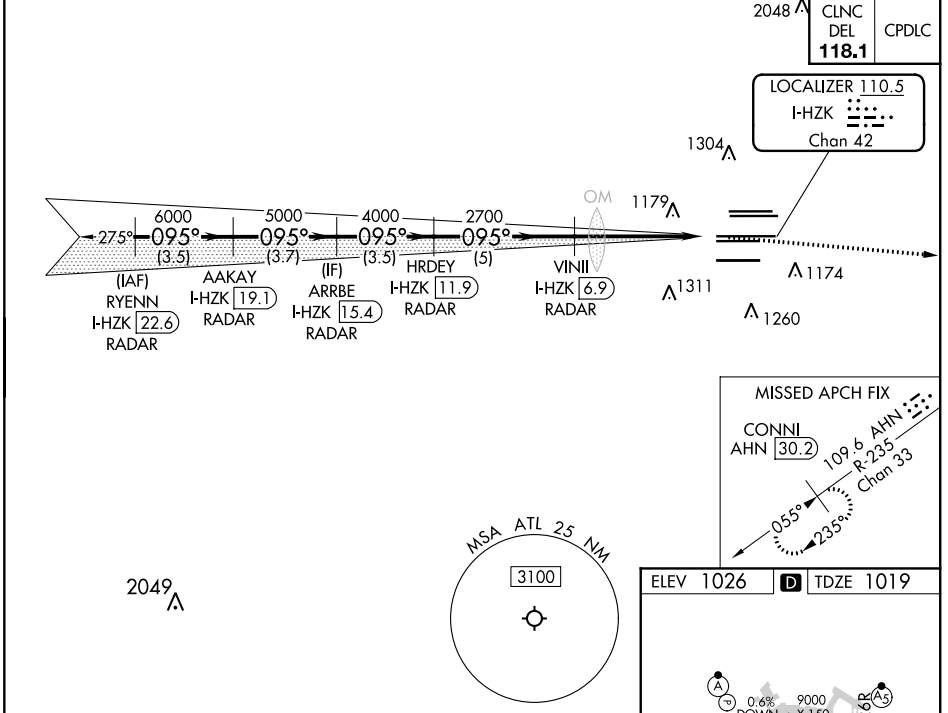
LOC/DME I-HZK <b>110.5</b> Chan <b>42</b>	APP CRS <b>095°</b>	Rwy Idg <b>11730</b> TDZE <b>1019</b> Apt Elev <b>1026</b>
---	------------------------	--

RADAR required for procedure entry, DME.

Simultaneous approach authorized. Use of FD or AP required during simultaneous operations. Dual VHF comm required. See additional requirements on AAUP.

MISSED APPROACH: Climb to 4000 on heading 100° and AHN VORTAC R-235 to CONNI/AHN 30.2 DME and hold.

D-ATIS ARR <b>119.65</b> DEP <b>125.55</b>	ATLANTA APP CON <b>127.9 379.9</b>	ATLANTA TOWER 8L-26R 8R-26L 9L-27R 9R-27L 10-28 RWYS <b>119.1 125.325 123.85 119.3 119.5 254.4</b> PRM <b>132.55</b>	ALL RWYS (8L-26R,8R-26L) (9L-27R,9R-27L) 10-28 RWYS <b>121.9 121.75 121.65 254.4</b>
--	--	---	---



SE-4, 16 JUN 2022 to 14 JUL 2022

SE-4, 16 JUN 2022 to 14 JUL 2022