

ATLANTA, GEORGIA

AL-26 (FAA)

ILS PRM RWY 8R (CLOSE PARALLEL)

HARTSFIELD-JACKSON ATLANTA INTL (ATL)

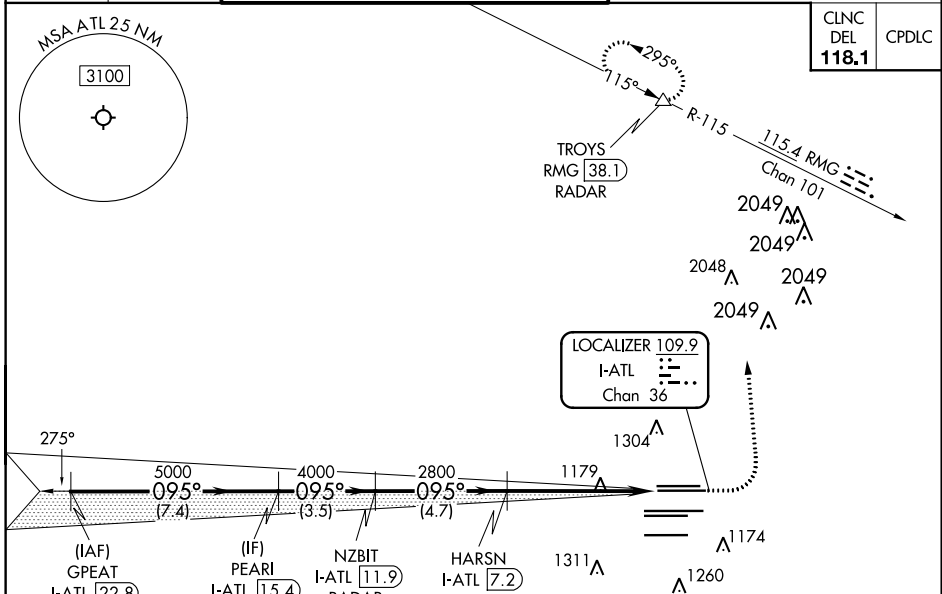
LOC/DME I-ATL 109.9 Chan 36	APP CRS 095°	Rwy Idg 9999 TDZE 1024 Apt Elev 1026
---	------------------------	---

RADAR required for procedure entry.
DME or RADAR required.

Simultaneous approach authorized. Use of FD or AP required during simultaneous operations. Dual VHF comm required. See additional requirements on AAUP.

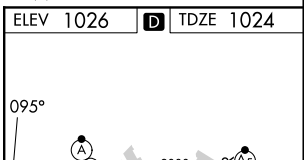
MISSED APPROACH: Climb to 1500 then climbing left turn to 3500 on heading 360° and RMG VORTAC R-115 to TROYS/RMG 38.1 DME/RADAR and hold.

D-ATIS ARR 119.65 DEP 125.55	ATLANTA APP CON 127.9 379.9	ATLANTA TOWER 8L-26R 119.1 8R-26L 125.325 9L-27R 123.85 9R-27L 119.3 10-28 RWYS 119.5 254.4 ALL RWYS PRM 126.9	GND CON 121.9	121.75	121.65	254.4
--	---------------------------------------	---	------------------	--------	--------	-------



CLNC DEL 118.1	CPDLC
--------------------------	-------

ELEV 1026	TDZE 1024
-----------	-----------



GS 3.00° TCH 53	A	B	C	D	E
1282/40			258 (300-3/4)		

HIRL all Rwws
TDZ/CL Rwws 8L, 9R, 10, 26R, 27L and 28

SE-4, 16 JUN 2022 to 14 JUL 2022

SE-4, 16 JUN 2022 to 14 JUL 2022