

# ILS PRM RWY 8L (SA CAT I)

(CLOSE PARALLEL)

HARTSFIELD-JACKSON ATLANTA INTL (ATL)

LOC/DME I-HFW <b>109.3</b> Chan <b>30</b>	APP CRS <b>095°</b>	Rwy Idg TDZE Apt Elev	<b>8800</b> <b>1015</b> <b>1026</b>
---	------------------------	-----------------------------	---

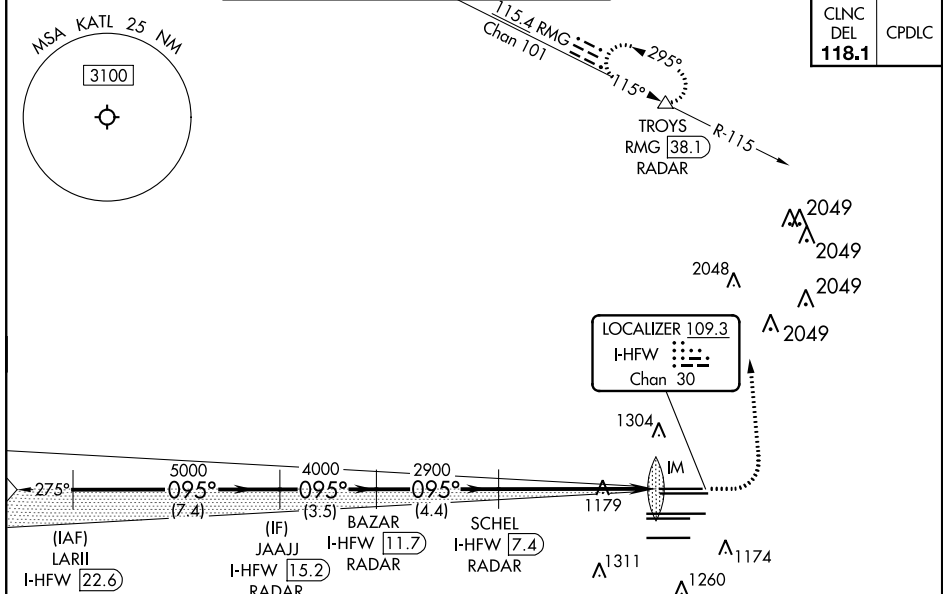
RADAR required for procedure entry. DME or RADAR required.

Requires specific OPSPEC, MSPEC, or LOA approval. Simultaneous approach authorized. Use of FD or AP required during simultaneous operations. Dual VHF comm required. See additional requirements on AAUP.



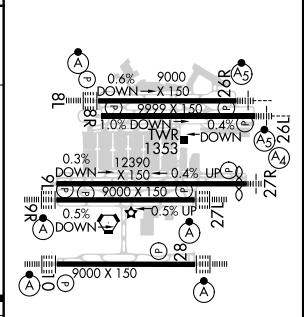
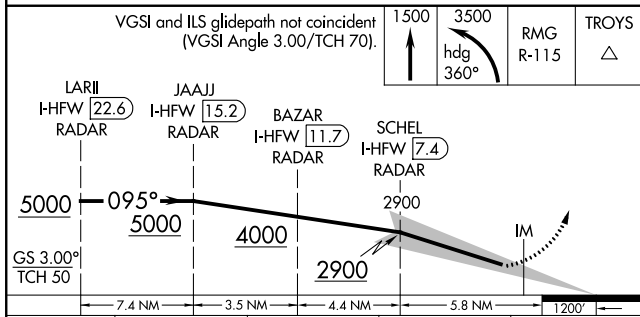
MISSED APPROACH: Climb to 1500 then climbing left turn to 3500 on heading 360° and RMG VORTAC R-115 to TROYS/RMG 38.1 DME/RADAR and hold.

D-ATIS ARR <b>119.65</b> DEP <b>125.55</b>	ATLANTA APP CON <b>127.9 379.9</b>	ATLANTA TOWER 8L-26R 8R-26L 9L-27R 9R-27L 10-28 RWYS <b>119.1 125.325 123.85 119.3 119.5 254.4</b> <b>PRM 126.9</b>	ALL RWYS <b>121.9</b>	GND CON (8L-26R,8R-26L) (9L-27R,9R-27L) 10-28 <b>121.75 121.65 254.4</b>	ALL RWYS <b>121.65 254.4</b>
--	--	--	-----------------------------	--	------------------------------------



CLNC DEL	CPDLC
<b>118.1</b>	

ELEV 1026	TDZE 1015
-----------	-----------



CATEGORY	A	B	C	D
S-ILS 8L	RA 147/14 150 DA 1165			

**SA CATEGORY I ILS - SPECIAL AIRCREW & AIRCRAFT CERTIFICATION REQUIRED**

HIRL all Rwy's  
TDZ/CL Rwy's 8L, 9R, 10, 26R, 27L and 28

SE-4, 16 JUN 2022 to 14 JUL 2022

SE-4, 16 JUN 2022 to 14 JUL 2022