

ATLANTA, GEORGIA

AL-26 (FAA)

# ILS PRM RWY 8L (CAT II & III)

(CLOSE PARALLEL)

HARTSFIELD-JACKSON ATLANTA INTL (ATL)

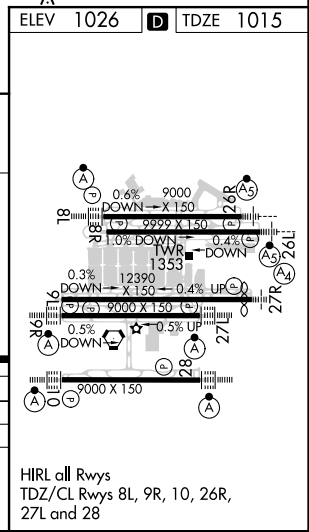
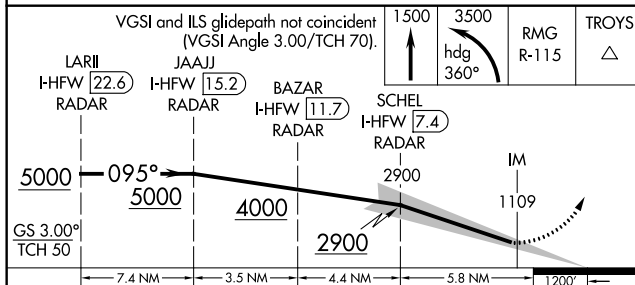
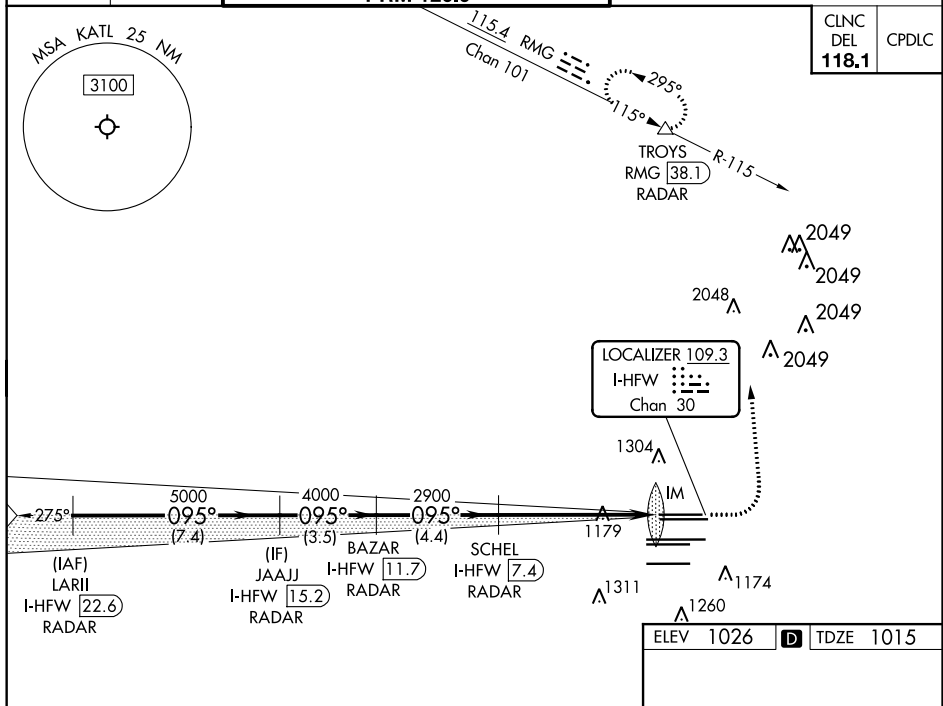
LOC/DME I-HFW <b>109.3</b> Chan <b>30</b>	APP CRS <b>095°</b>	Rwy Idg TDZE Apt Elev	<b>8800</b> <b>1015</b> <b>1026</b>
---	------------------------	-----------------------------	---

RADAR required for procedure entry. DME or RADAR required.

ALSIF-2

MISSED APPROACH: Climb to 1500 then climbing left turn to 3500 on heading 360° and RMG VORTAC R-115 to TROYS/RMG 38.1 DME/RADAR and hold.

D-ATIS ARR <b>119.65</b> DEP <b>125.55</b>	ATLANTA APP CON <b>127.9 379.9</b>	ATLANTA TOWER 8L-26R 8R-26L 9L-27R 9R-27L 10-28 RWYS <b>119.1 125.325 123.85 119.3 119.5 254.4</b>	ALL RWYS <b>254.4</b>	GND CON (8L-26R,8R-26L) (9L-27R,9R-27L) 10-28 RWYS <b>121.9 121.75 121.65 254.4</b>	ALL RWYS <b>254.4</b>
--	--	--	-----------------------------	---	-----------------------------



CATEGORY	A	B	C	D
S-ILS 8L	CAT II RA 105/12 100 DA 1115			
S-ILS 8L	CAT III RVR 06			

## CATEGORY II & III ILS - SPECIAL AIRCREW & AIRCRAFT CERTIFICATION REQUIRED

HIRL all Rwws  
TDZ/CL Rwws 8L, 9R, 10, 26R, 27L and 28

SE-4, 16 JUN 2022 to 14 JUL 2022

SE-4, 16 JUN 2022 to 14 JUL 2022