

ATLANTA, GEORGIA

AL-26 (FAA)

22139

# ILS PRM RWY 28 (SA CAT I) (CLOSE PARALLEL)

HARTSFIELD-JACKSON ATLANTA INTL (ATL)

LOC/DME I-PKU <b>111.75</b> Chan <b>54</b> (Y)	APP CRS <b>275°</b>	Rwy Idg TDZE <b>998</b> Apt Elev <b>1026</b>	<b>9000</b>
--	------------------------	--	-------------

RNAV 1-GPS or RADAR required for procedure entry.  
From TERII: RNAV 1-GPS required. DME or RADAR required.

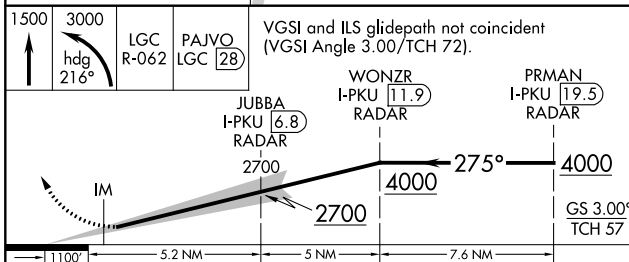
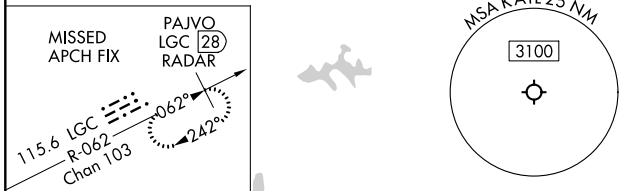
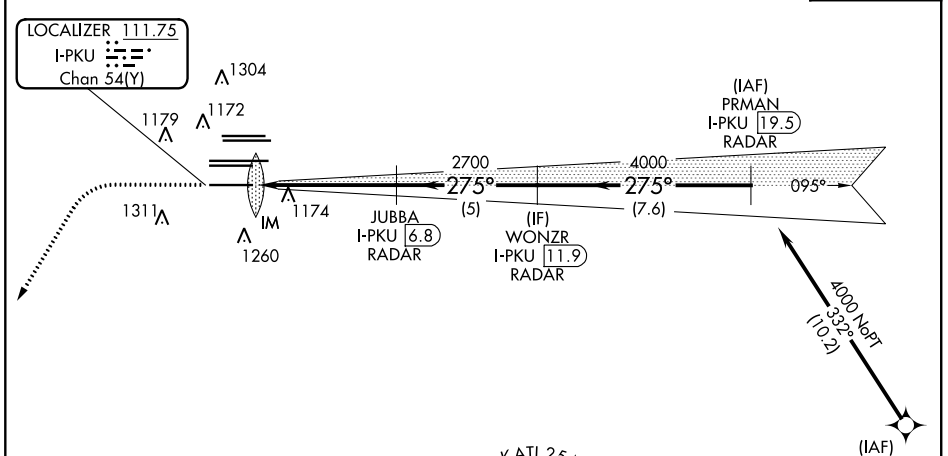
ALSF-2

MISSED APPROACH: Climb to 1500 then climbing left turn to 3000 on heading 216° and LGC VORTAC R-062 to PAJVO/LGC 28 DME/RADAR and hold.

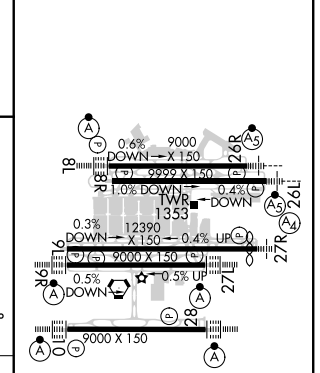
Simultaneous approach authorized. Use of FD or AP required during simultaneous operations. Dual VHF comm required. See additional requirements on AAUP. Requires specific OPSPEC, MSPEC, or LOA approval.

D-ATIS ARR <b>119.65</b> DEP <b>125.55</b>	ATLANTA APP CON <b>127.9 379.9</b>	ATLANTA TOWER 8L-26R 8R-26L 9L-27R 9R-27L 10-28 RWYS <b>119.1 125.325 123.85 119.3 119.5 254.4</b> <b>PRM 133.425</b>	ALL RWYS (8L-26R,8R-26L) (9L-27R,9R-27L) 10-28 <b>121.9 121.75 121.65 254.4</b>	GND CON 10-28 <b>121.75 121.65 254.4</b>	ALL RWYS <b>254.4</b>
--	---------------------------------------	--	---	--	--------------------------

$\Delta$ 2049 $\Delta$ 2049	CLNC DEL <b>118.1</b>	CPDLC
--------------------------------	--------------------------	-------



ELEV 1026	<b>D</b> TDZE 998
-----------	-------------------



CATEGORY	A	B	C	D
S-ILS 28	RA 264/14		150 DA 1148	
<b>SA CATEGORY I ILS - SPECIAL AIRCREW &amp; AIRCRAFT CERTIFICATION REQUIRED</b>				

HIRL all Rwys  
TDZ/CL Rwys 8L, 9R,  
10, 26R, 27L and 28

ATLANTA, GEORGIA  
Amdt 5 07OCT21

33°38'N-84°26'W

HARTSFIELD-JACKSON ATLANTA INTL (ATL)

# ILS PRM RWY 28 (SA CAT I) (CLOSE PARALLEL)

SE-4, 16 JUN 2022 to 14 JUL 2022

SE-4, 16 JUN 2022 to 14 JUL 2022