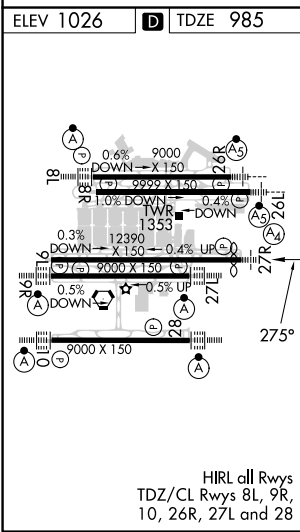
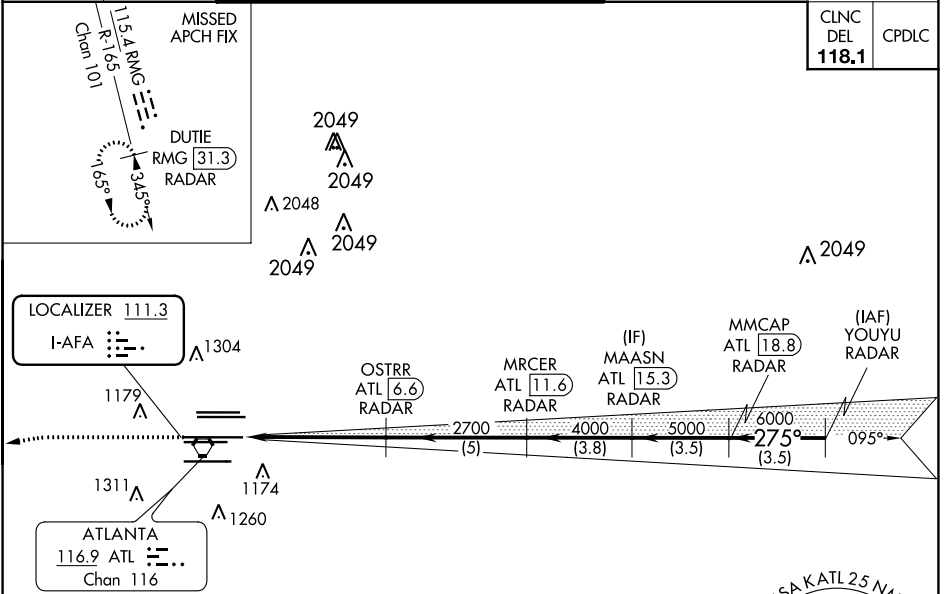


LOC I-AFA 111.3	APP CRS 275°	Rwy Idg 11690	TDZE 985
		Apt Elev 1026	

ILS PRM RWY 27R (CLOSE PARALLEL)

HARTSFIELD-JACKSON ATLANTA INTL (ATL)

RADAR required for procedure entry. DME or RADAR required.		MALS 	MISSED APPROACH: Climb to 1500 then climbing left turn to 4000 on heading 265° and RMG VORTAC R-165 to DUTIE/RMG 31.3 DME/RADAR and hold.	
Inop table does not apply. Simultaneous approach authorized. Use of FD or AP required during simultaneous operations. Dual VHF comm required. See additional requirements on AAUP.				
D-ATIS ARR 119.65 DEP 125.55	ATLANTA APP CON 127.9 379.9	ATLANTA TOWER 8L-26R 8R-26L 9L-27R 9R-27L 10-28 RWYS 119.1 125.325 123.85 119.3 119.5 254.4 PRM 132.55		ALL RWYS 254.4
		GND CON (8L-26R, 8R-26L) (9L-27R, 9R-27L) 10-28 RWYS 121.9 121.75 121.65 254.4		



ELEV 1026	D	TDZE 985		
		RMG R-165 DUTIE RMG 31.3	VGSIs and ILS glidepath not coincident (VGSi Angle 3.00/TCH 72). YOUYU RADAR	
		OSTRR ATL 6.6 RADAR	MRCER ATL 11.6 RADAR	MAASN ATL 15.3 RADAR
		MMCAP ATL 18.8 RADAR		YOUYU RADAR
		GS 3.00° TCH 56		
CATEGORY	A	B	C	D
S-ILS 27R	1185/40		200 (200-¾)	

SE-4, 16 JUN 2022 to 14 JUL 2022

SE-4, 16 JUN 2022 to 14 JUL 2022