

ATLANTA, GEORGIA

AL-26 (FAA)

ILS PRM RWY 27L (SA CAT I)

(CLOSE PARALLEL)

HARTSFIELD-JACKSON ATLANTA INTL (ATL)

LOC/DME I-FSQ 108.5 Chan 22	APP CRS 275°	Rwy Idg TDZE 999 Apt Elev 1026
---	------------------------	--

RADAR required for procedure entry. DME or RADAR required.

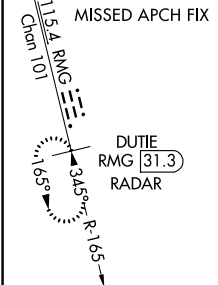
Simultaneous approach authorized. Use of FD or AP required during simultaneous operations. Dual VHF Comm required. See additional requirements on AAUP. Requires specific OPSPEC, MSPEC, or LOA approval.

ALSF-2

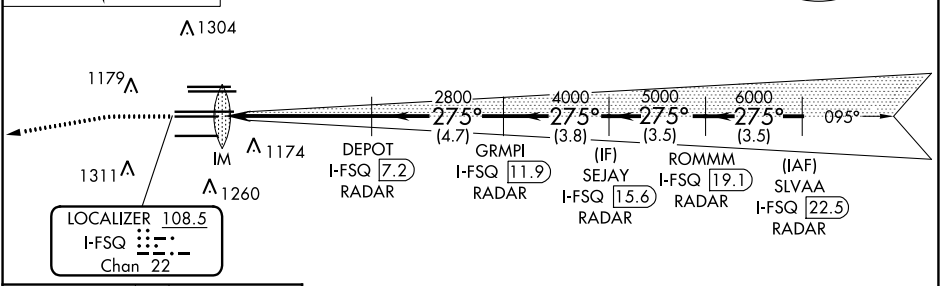
MISSED APPROACH: Climb to 1500 then climbing left turn to 4000 on heading 265° and RMG VORTAC R-165 to DUTIE/RMG 31.3 DME/RADAR and hold.

D-ATIS ARR 119.65 DEP 125.55	ATLANTA APP CON 127.9 379.9	ATLANTA TOWER ALL RWYS 8L-26R 8R-26L 9L-27R 9R-27L 10-28 119.1 125.325 123.85 119.3 119.5 254.4 PRM 132.55
--	--	--

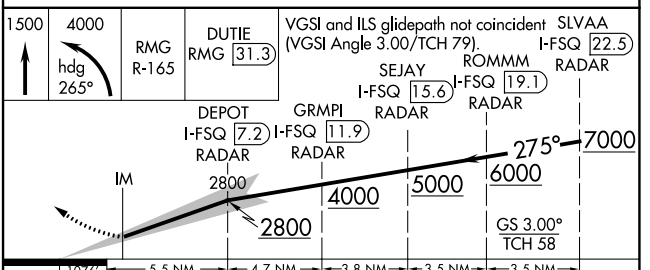
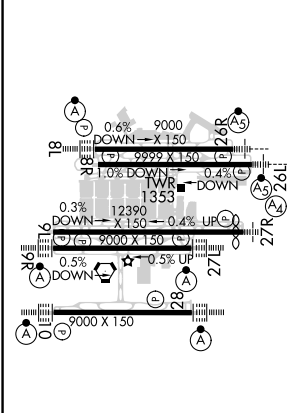
GND CON (8L-26R,8R-26L) (9L-27R,9R-27L) 10-28 121.9 121.75 121.65 254.4	ALL RWYS 254.4
--	--------------------------



CLNC DEL 118.1	CPDLC
-----------------------------	-------



ELEV 1026	D	TDZE 999
------------------	----------	-----------------



1078	5.5 NM	4.7 NM	3.8 NM	3.5 NM	3.5 NM
CATEGORY	A	B	C	D	
S-ILS 27L	RA 214/14 150 DA 1149				

SA CATEGORY I ILS- SPECIAL AIRCREW & AIRCRAFT CERTIFICATION REQUIRED

HIRL all Rwy
TDZ/CL Rwy 8L, 9R,
10, 26R, 27L and 28

33°38'N-84°26'W

HARTSFIELD-JACKSON ATLANTA INTL (ATL)

ILS PRM RWY 27L (SA CAT I) (CLOSE PARALLEL)

SE-4, 16 JUN 2022 to 14 JUL 2022

SE-4, 16 JUN 2022 to 14 JUL 2022