

ATLANTA, GEORGIA

AL-26 (FAA)

22139

ILS PRM RWY 27L (CLOSE PARALLEL)

HARTSFIELD-JACKSON ATLANTA INTL (ATL)

LOC/DME I-FSQ 108.5 Chan 22	APP CRS 275°	Rwy Idg TDZE 999 Apt Elev 1026	8865
---	------------------------	--	-------------

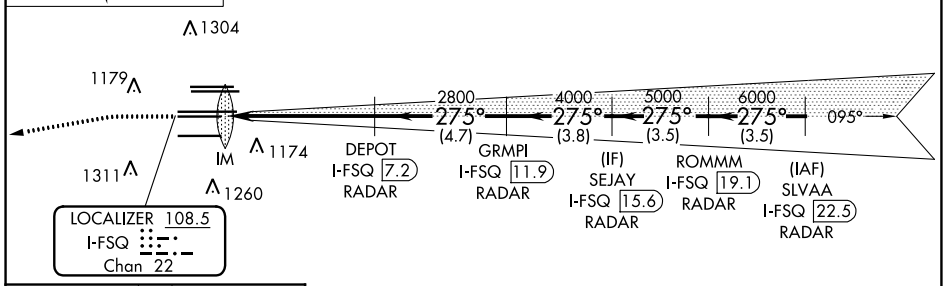
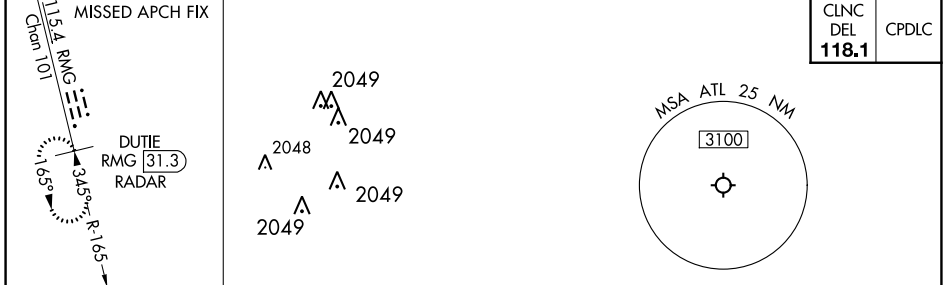
RADAR required for procedure entry. DME or RADAR required.

Simultaneous approach authorized. Use of FD or AP required during simultaneous operations. Dual VHF comm required. See additional requirements on AAUP.

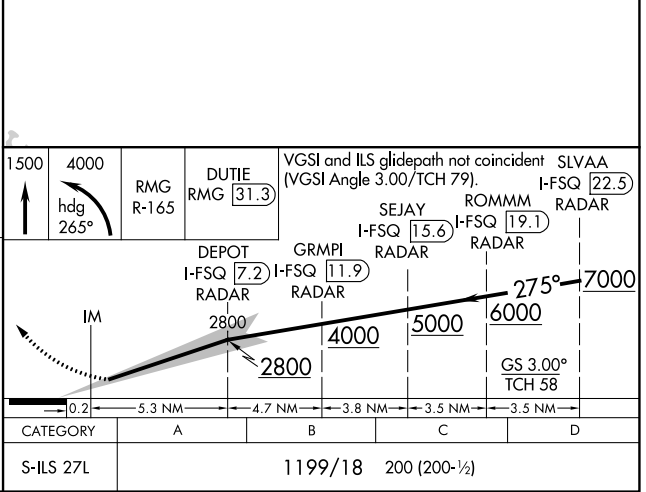
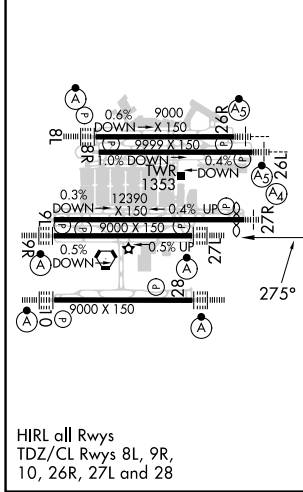
ALSIF-2

MISSED APPROACH: Climb to 1500 then climbing left turn to 4000 on heading 265° and RMG VORTAC R-165 to DUTIE/RMG 31.3 DME/RADAR and hold.

D-ATIS ARR 119.65 DEP 125.55	ATLANTA APP CON 127.9 379.9	ATLANTA TOWER 8L-26R 8R-26L 9L-27R 9R-27L 10-28 119.1 125.325 123.85 119.3 119.5 254.4 PRM 132.55	ALL RWYS 121.9 121.75 121.65 254.4	GND CON (8L-26R,8R-26L) (9L-27R,9R-27L) 10-28 121.9 121.75 121.65 254.4	ALL RWYS
--	--	--	---	--	-------------



ELEV 1026	D	TDZE 999
------------------	----------	-----------------



ATLANTA, GEORGIA
Amdt 4 22APR21

33°38'N-84°26'W

HARTSFIELD-JACKSON ATLANTA INTL (ATL)
ILS PRM RWY 27L (CLOSE PARALLEL)

SE-4, 16 JUN 2022 to 14 JUL 2022

SE-4, 16 JUN 2022 to 14 JUL 2022