

ATLANTA, GEORGIA

AL-26 (FAA)

ILS PRM RWY 26L (CLOSE PARALLEL)

HARTSFIELD-JACKSON ATLANTA INTL (ATL)

LOC/DME I-BRU 108.7 Chan 24	APP CRS 275°	Rwy Idg TDZE 996 Apt Elev 1026
--	------------------------	--

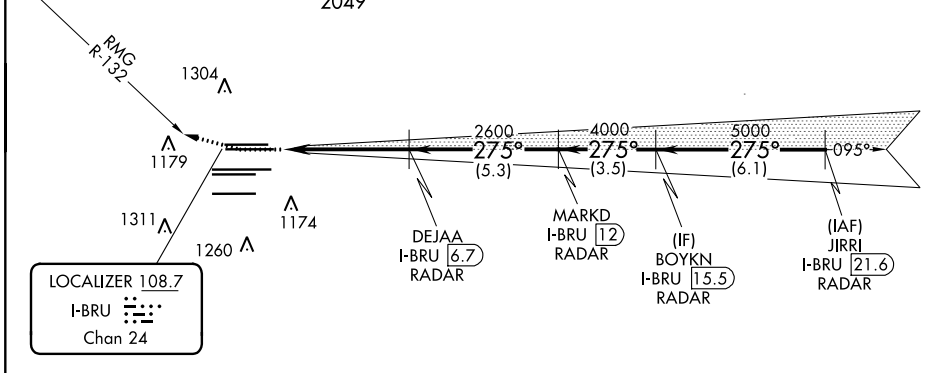
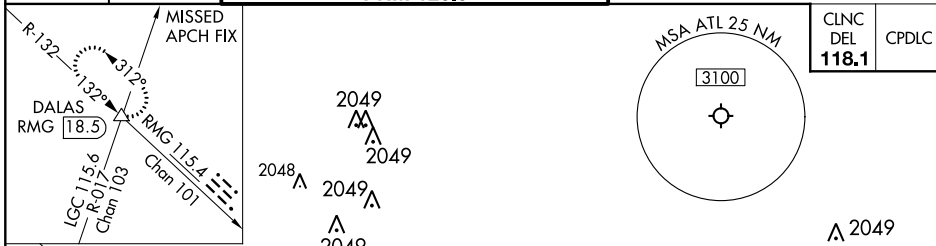
RADAR required.

For Inop ALS, increase S-ILS 26L visibility all Cats to RVR 4500. Simultaneous approach authorized. Use of FD or AP required during simultaneous operations. Dual VHF comm required. See additional requirements on AAUP.

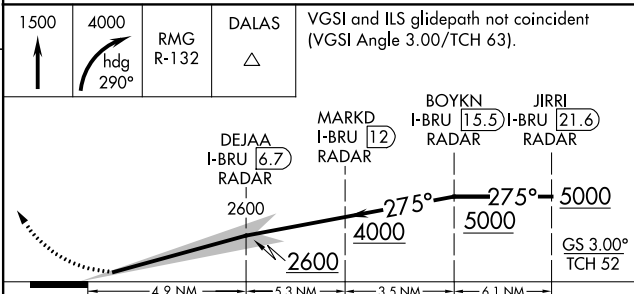
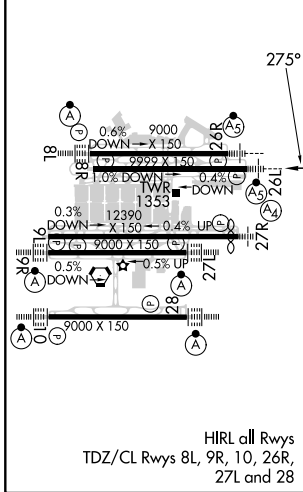


MISSED APPROACH: Climb to 1500 then climbing right turn to 4000 on heading 290° and RMG R-132 to DALAS INT/ RMG VORTAC 18.5 DME and hold.

D-ATIS ARR 119.65 DEP 125.55	ATLANTA APP CON 127.9 379.9	ATLANTA TOWER 8L-26R 8R-26L 9L-27R 9R-27L 10-28 RWYS 119.1 125.325 123.85 119.3 119.5 254.4 PRM 126.9	ALL RWYS (8L-26R, 8R-26L) (9L-27R, 9R-27L) 10-28 121.9 121.75 121.65 254.4	GND CON ALL RWYS
--	---------------------------------------	--	---	---------------------



ELEV 1026	D	TDZE 996
-----------	---	----------



CATEGORY	A	B	C	D	E
S-ILS 26L	1280/24 284 (300-1/2)				

ATLANTA, GEORGIA
Amdt 3 22APR21

33°38'N-84°26'W

HARTSFIELD-JACKSON ATLANTA INTL (ATL)

ILS PRM RWY 26L (CLOSE PARALLEL)

SE-4, 16 JUN 2022 to 14 JUL 2022

SE-4, 16 JUN 2022 to 14 JUL 2022