

ATLANTA, GEORGIA

AL-26 (FAA)

22139

LOC/DME I-FUN 108.9 Chan 26	APP CRS 095°	Rwy Idg 9R 9000 11730 TDZE 1026 1019 Apt Elev 1026 1026
---	------------------------	---

ILS or LOC RWY 9R

HARTSFIELD-JACKSON ATLANTA INTL (ATL)

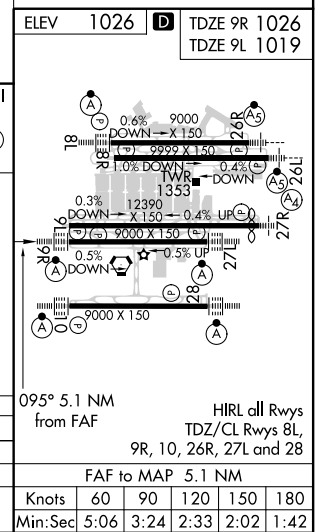
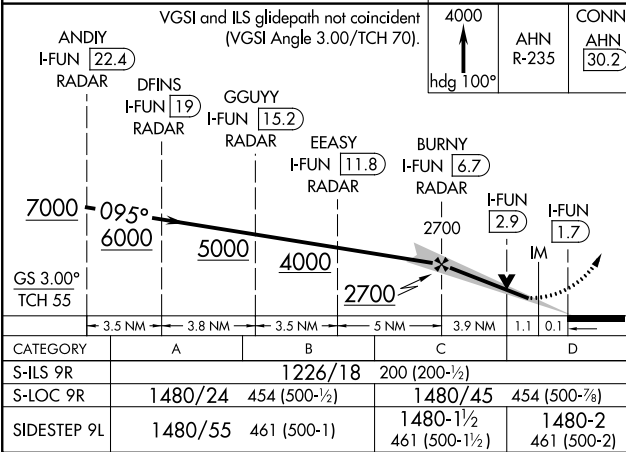
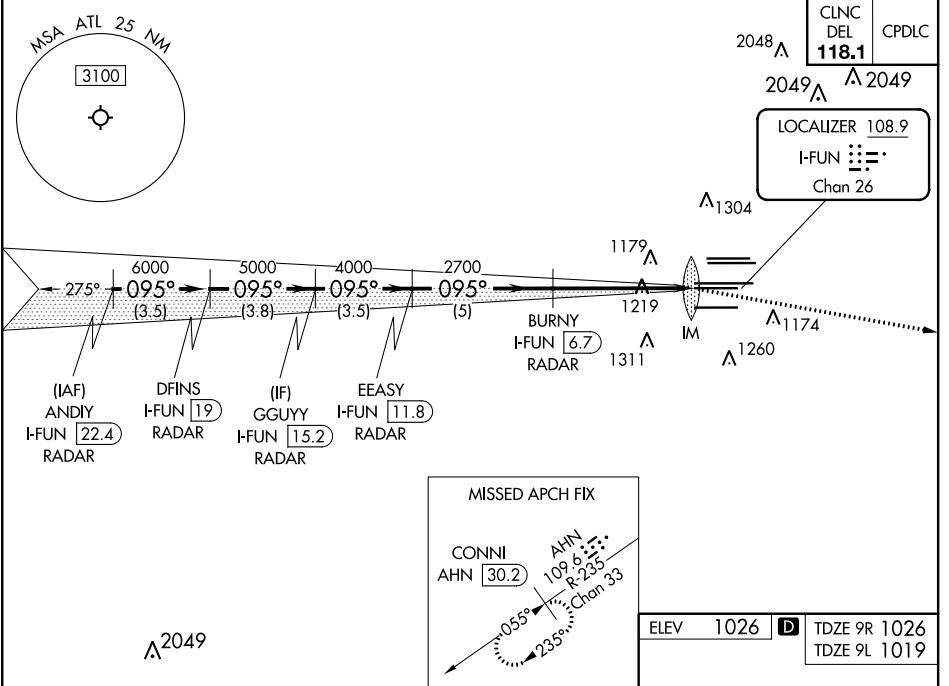
RADAR required for procedure entry, DME.

Simultaneous approach authorized.
Inop table does not apply to sidestep Rwy 9L.

Rwy 9R
ALS-F-2

MISSED APPROACH: Climb to 4000 on heading 100° and AHN VOR/DME R-235 to CONNI/AHN 30.2 DME and hold.

D-ATIS ARR 119.65 DEP 125.55	ATLANTA APP CON 127.9 379.9	ATLANTA TOWER 8L-26R 8R-26L 9L-27R 9R-27L 10-28 RWYS 119.1 125.325 123.85 119.3 119.5 254.4	ALL RWYS 121.9	GND CON (8L-26R,8R-26L) (9L-27R,9R-27L) 10-28 121.75 121.65 254.4	ALL RWYS
--	--	--	-----------------------------	--	-------------



ATLANTA, GEORGIA
Amdt 20 22APR21

33°38'N-84°26'W

HARTSFIELD-JACKSON ATLANTA INTL (ATL)

ILS or LOC RWY 9R

SE-4, 16 JUN 2022 to 14 JUL 2022

SE-4, 16 JUN 2022 to 14 JUL 2022