

LOC/DME I-HZK 110.5 Chan 42	APP CRS 095°	Rwy Idg TDZE Apt Elev	9L 11730 9000 1019 1026 1026 1026	9R
---	------------------------	-----------------------------	---	----

ILS or LOC RWY 9L

HARTSFIELD-JACKSON ATLANTA INTL (ATL)

RADAR required for procedure entry, DME.
 Simultaneous approach authorized.
 Rwy 9L helicopter visibility reduction below RVR 4000 NM.

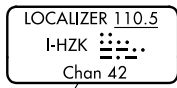


MISSED APPROACH: Climb to 4000 on heading 100° and AHN VOR/DME R-235 to CONNI/AHN 30.2 DME and hold.

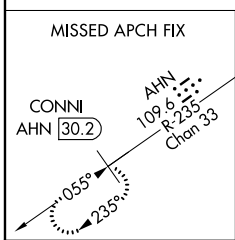
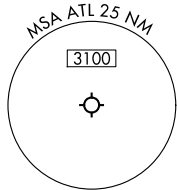
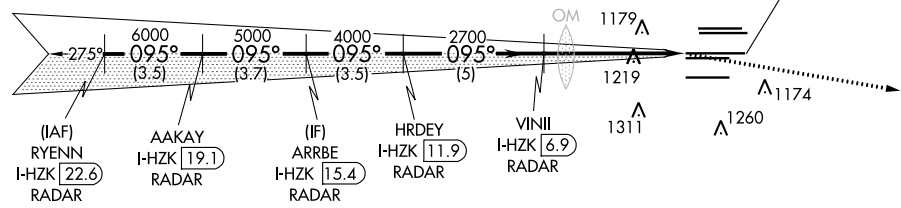
D-ATIS ARR 119.65	ATLANTA APP CON 127.9 379.9	ATLANTA TOWER 8L-26R 8R-26L 9L-27R 9R-27L 10-28 RWYS				ALL RWYS	GND CON (8L-26R,8R-26L) (9L-27R,9R-27L) 10-28	ALL RWYS
DEP 125.55	127.9 379.9	119.1 125.325 123.85 119.3 119.5 254.4	121.9	121.75	121.65	254.4		

CNLC DEL 118.1	CPDLC
-----------------------------	-------

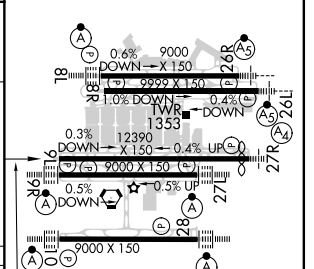
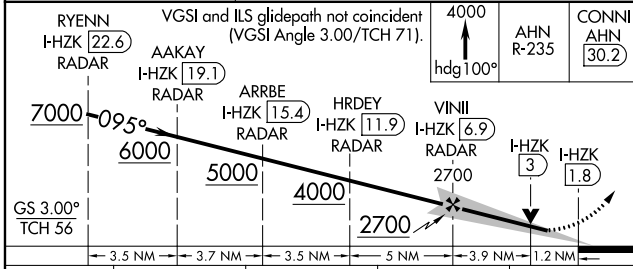
2049 Δ



1304 Δ



ELEV 1026	TDZE 9L 1019	TDZE 9R 1026
-----------	--------------	--------------



CATEGORY	A	B	C	D
S-ILS 9L	1359/50		340 (400-1)	
S-LOC 9L	1480/55	461 (500-1)	1480-1 $\frac{3}{8}$	461 (500-1 $\frac{3}{8}$)
SIDESTEP 9R	1480/55	454 (500-1)	1480-1 $\frac{3}{8}$ 454 (500-1 $\frac{3}{8}$)	1480-1 $\frac{1}{2}$ 454 (500-1 $\frac{1}{2}$)

095° 5.1 NM from FAF	HIRL all Rwys 8L, 9R, 10, 26R, 27L and 28
FAF to MAP 5.1 NM	
Knots	60 90 120 150 180
Min:Sec	5:06 3:24 2:33 2:02 1:42

SE-4, 16 JUN 2022 to 14 JUL 2022

SE-4, 16 JUN 2022 to 14 JUL 2022