

LOC/DME I-HFW <b>109.3</b> Chan <b>30</b>	APP CRS <b>095°</b>	Rwy Idg TDZE Apt Elev	8L <b>8800</b> <b>1015</b> <b>1026</b>	8R <b>9999</b> <b>1024</b> <b>1026</b>
---	------------------------	-----------------------------	---	---

# ILS or LOC RWY 8L

HARTSFIELD-JACKSON ATLANTA INTL (ATL)

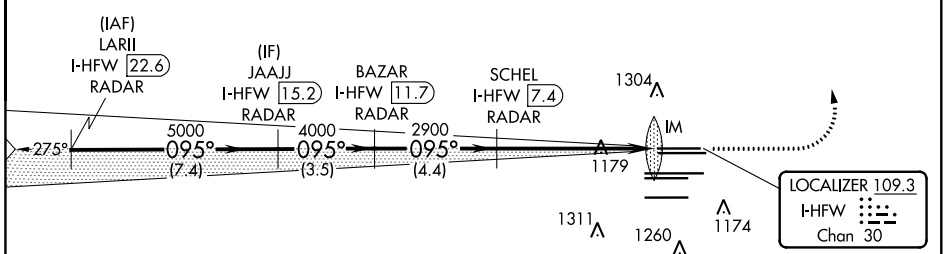
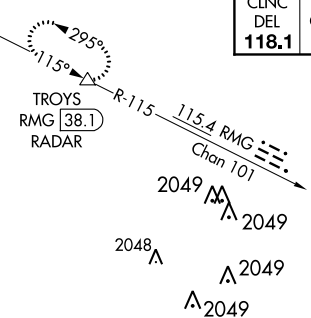
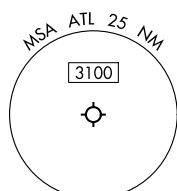
RADAR required for procedure entry. DME or RADAR required.  
 Simultaneous approach authorized.  
 Inop table does not apply to sidestep 8R.



MISSED APPROACH: Climb to 1500 then climbing left turn to 3500 on heading 360° and RMG VORTAC R-115 to TROYS/RMG 38.1 DME/RADAR and hold.

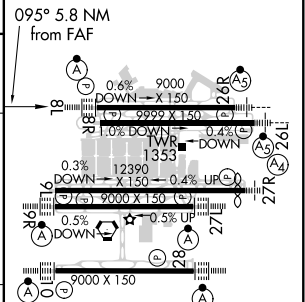
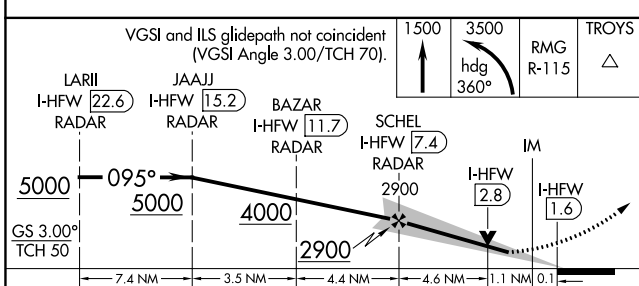
D-ATIS ARR <b>119.65</b> DEP <b>125.55</b>	ATLANTA APP CON <b>127.9 379.9</b>	ATLANTA TOWER 8L-26R 8R-26L 9L-27R 9R-27L 10-28 RWYS <b>119.1 125.325 123.85 119.3 119.5 254.4</b>				ALL RWYS (8L-26R,8R-26L) (9L-27R,9R-27L) 10-28 RWYS <b>121.9 121.75 121.65 254.4</b>	GND CON <b>121.75 121.65 254.4</b>	ALL RWYS
--	---------------------------------------	--	--	--	--	--	---------------------------------------	----------

CLNC DEL	CPDLC
<b>118.1</b>	



LOCALIZER <b>109.3</b> I-HFW Chan <b>30</b>
---

ELEV 1026	TDZE 8L 1015	TDZE 8R 1024
-----------	--------------	--------------



CATEGORY	A	B	C	D
S-ILS 8L	1215/18		200 (200-½)	
S-LOC 8L	1460/24	445 (500-½)	1460/45	445 (500-¾)
SIDESTEP 8R	1460/55	436 (500-1)	1460-1½ 436 (500-1½)	1460-2 436 (500-2)

HRL all Rwys TDZ/CL Rwys 8L, 9R, 10, 26R, 27L and 28					
FAF to MAP 5.8 NM					
Knots	60	90	120	150	180
Min:Sec	5:48	3:52	2:54	2:19	1:56

SE-4, 16 JUN 2022 to 14 JUL 2022

SE-4, 16 JUN 2022 to 14 JUL 2022