

ATLANTA, GEORGIA

AL-26 (FAA)

22139

LOC/DME I-PKU 111.75 Chan 54(Y)	APP CRS 275°	Rwy ldg TDZE Apt Elev 9000 998 1026
---	------------------------	---

ILS or LOC RWY 28

HARTSFIELD-JACKSON ATLANTA INTL (ATL)

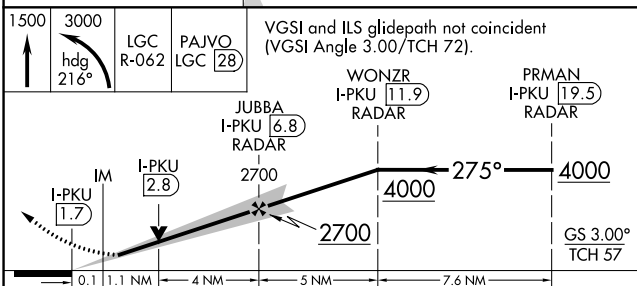
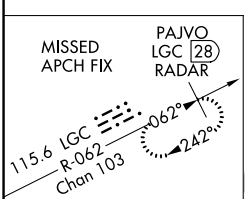
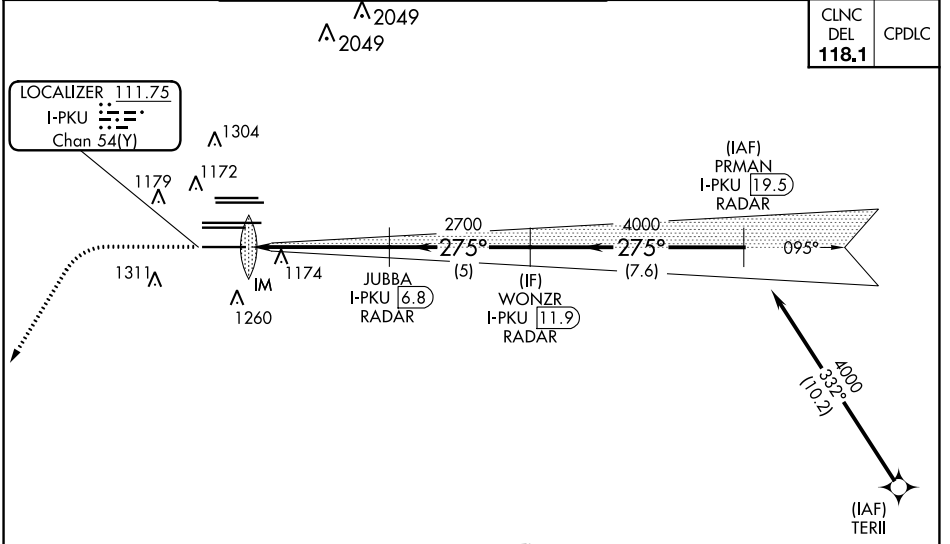
RNAV 1-GPS or RADAR required for procedure entry.
From TERII: RNAV 1-GPS required. DME or RADAR required.

ALSF-2

MISSED APPROACH: Climb to 1500 then climbing left turn to 3000 on heading 216° and LGC VORTAC R-062 to PAJVO/LGC 28 DME/RADAR and hold.

Simultaneous approach authorized.

D-ATIS ARR 119.65	ATLANTA APP CON 127.9 379.9	ATLANTA TOWER 8L-26R 8R-26L 9L-27R 9R-27L 10-28 RWYS				ALL RWYS (8L-26R,8R-26L) (9L-27R,9R-27L)	GND CON 121.9	ALL RWYS 121.65 254.4
DEP 125.55	127.9 379.9	119.1 125.325 123.85 119.3 119.5 254.4			121.9	121.75	121.65 254.4	



CATEGORY	A	B	C	D
S-ILS 28		1198/18	200 (200-1/2)	
S-LOC 28	1440/24	442 (500-1/2)	1440/45	442 (500-7/8)

ELEV 1026 TDZE 998

HRL all Rwys
TDZ/CL Rws 8L, 9R,
10, 26R, 27L and 28

FAF to MAP 5.2 NM

Knots	60	90	120	150	180
Min:Sec	5:12	3:28	2:36	2:05	1:44

ATLANTA, GEORGIA
Amdt 5 07OCT21

33°38'N-84°26'W

HARTSFIELD-JACKSON ATLANTA INTL (ATL) ILS or LOC RWY 28

SE-4, 16 JUN 2022 to 14 JUL 2022

SE-4, 16 JUN 2022 to 14 JUL 2022