

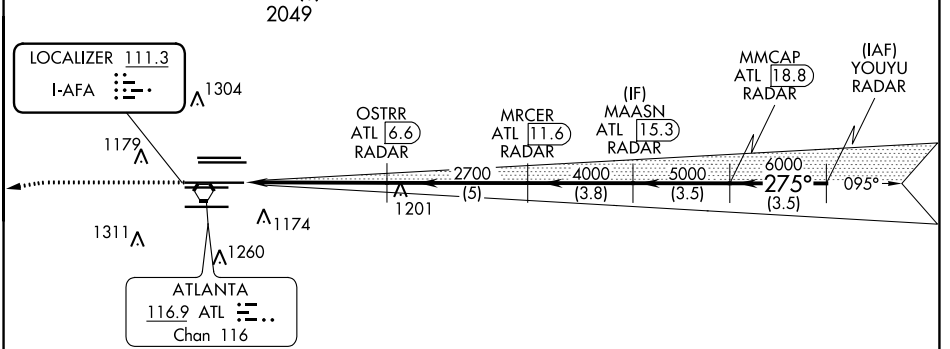
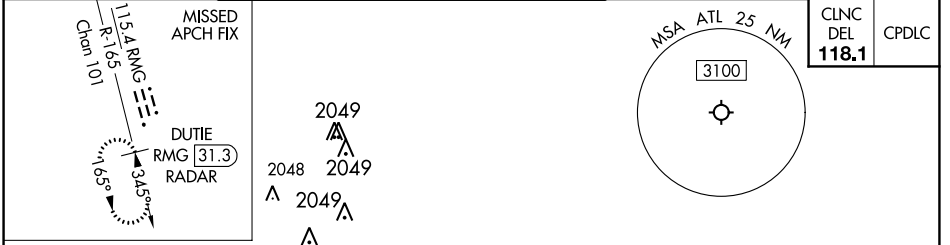
LOC I-AFA 111.3	APP CRS 275°	Rwy Idg TDZE Apt Elev	27R 11690 985 1026	27L 8865 999 1026
---------------------------	------------------------	-----------------------------	--	---

ILS or LOC RWY 27R

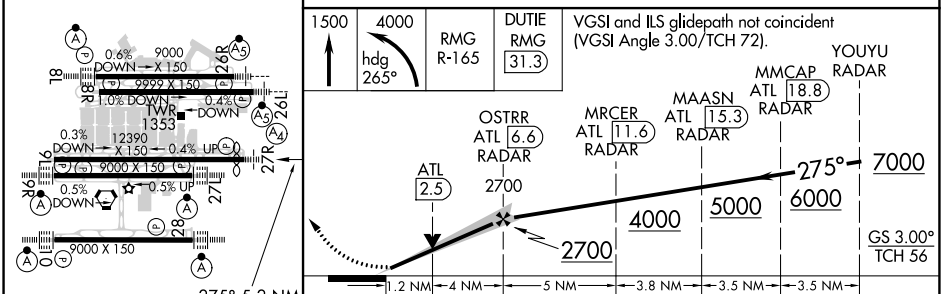
HARTSFIELD-JACKSON ATLANTA INTL (ATL)

RADAR required for procedure entry. DME or RADAR required.		Rwy 27R MALS	Rwy 27L ALSF-2	MISSED APPROACH: Climb to 1500 then climbing left turn to 4000 on heading 265° and RMG VORTAC R-165 to DUTIE/RMG 31.3 DME/RADAR and hold.
<p>Simultaneous approach authorized. Inop table does not apply to S-ILS 27R all Cats. For inop ALS, increase S-LOC 27R Cats A and B visibility to RVR 5500.</p>				

D-ATIS ARR 119.65	ATLANTA APP CON	ATLANTA TOWER				ALL RWYS	GND CON	ALL RWYS
DEP 125.55	127.9 379.9	8L-26R	8R-26L	9L-27R	9R-27L	10-28	(8L-26R, 8R-26L) (9L-27R, 9R-27L)	10-28
		119.1	125.325	123.85	119.3	119.5	121.9	121.75
						254.4	121.65	254.4



ELEV 1026	D	TDZE 27R 985	TDZE 27L 999
-----------	----------	--------------	--------------



CATEGORY	A	B	C	D
S-ILS 27R	1185/40		200 (200-¾)	
S-LOC 27R	1420/40	435 (400-¾)	1420/50	435 (400-1)
SIDESTEP 27L	1420/55 421 (400-1)			1420-1½ 421 (400-1½)

SE-4, 16 JUN 2022 to 14 JUL 2022

SE-4, 16 JUN 2022 to 14 JUL 2022