

ATLANTA, GEORGIA

AL-26 (FAA)

22139

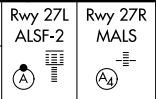
LOC/DME I-FSQ <b>108.5</b> Chan <b>22</b>	APP CRS <b>275°</b>	Rwy ldg TDZE Apt Elev	27L <b>8865</b> <b>999</b> <b>1026</b>	27R <b>11690</b> <b>985</b> <b>1026</b>
---	------------------------	-----------------------------	---	--

# ILS or LOC RWY 27L

HARTSFIELD-JACKSON ATLANTA INTL (ATL)

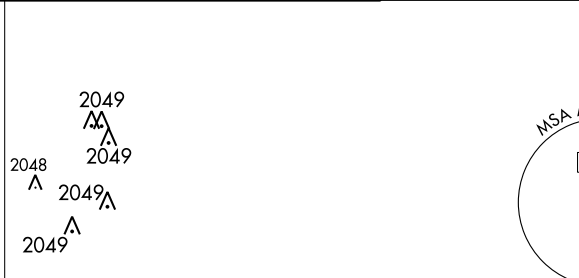
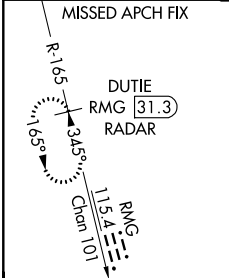
DME or RADAR required.  
RADAR required for procedure entry.

Simultaneous approach authorized.  
Inop table does not apply to Sidestep Rwy 27R.

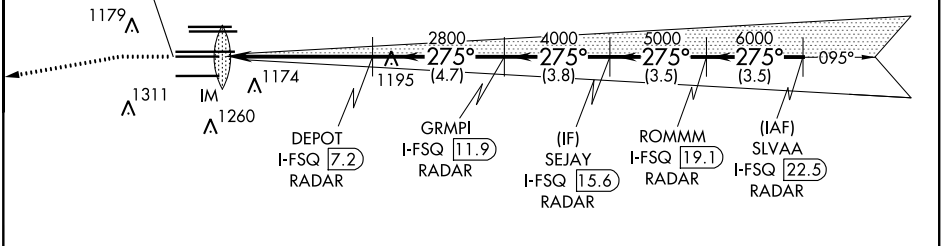
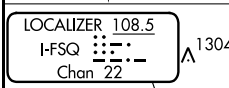
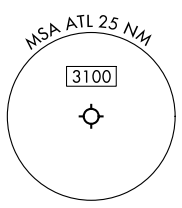


MISSED APPROACH: Climb to 1500 then climbing left turn to 4000 on heading 265° and RMG VORTAC R-165 to DUTIE/RMG 31.3 DME/RADAR and hold.

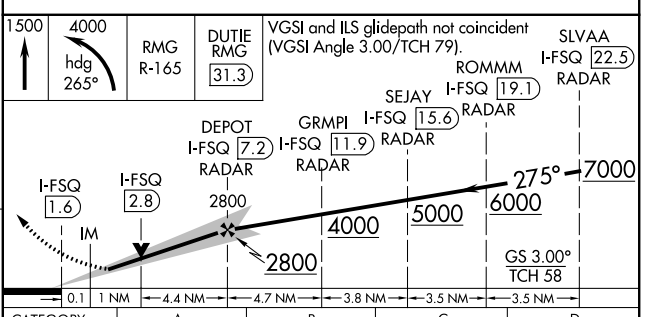
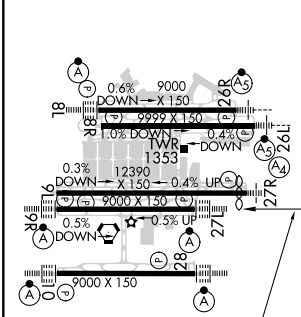
D-ATIS ARR <b>119.65</b>	ATLANTA APP CON DEP <b>127.9</b> <b>379.9</b>	ATLANTA TOWER 8L-26R 8R-26L 9L-27R 9R-27L 10-28 RWYS					ALL RWYS <b>121.9</b>	GND CON (8L-26R, 8R-26L) (9L-27R, 9R-27L) 10-28 RWYS <b>121.75</b> <b>121.65</b> <b>254.4</b>	ALL RWYS <b>254.4</b>
-----------------------------	---	---	--	--	--	--	-----------------------------	---	-----------------------------



CINC DEL <b>118.1</b>	CPDLC
-----------------------------	-------



ELEV 1026	<b>D</b>	TDZE 27L 999	TDZE 27R 985
-----------	----------	--------------	--------------



FAF to MAP 5.5 NM	275° 5.5 NM from FAF			
HIRL all Rwys TDZ/CL Rwys 8L, 9R, 10, 26R, 27L and 28	HARTSFIELD-JACKSON ATLANTA INTL (ATL)			
Knots Min:Sec	60 5:30	90 3:40	120 2:45	150 2:12
SIDESTEP 27R	1420-1 <sup>5</sup> / <sub>8</sub>	435 (500-1 <sup>5</sup> / <sub>8</sub> )	1420-2 <sup>1</sup> / <sub>4</sub> 435 (500-2 <sup>1</sup> / <sub>4</sub> )	1420-2 <sup>3</sup> / <sub>4</sub> 435 (500-2 <sup>3</sup> / <sub>4</sub> )

ATLANTA, GEORGIA  
Amdt 19 22APR21

33°38'N-84°26'W

# ILS or LOC RWY 27L

SE-4, 16 JUN 2022 to 14 JUL 2022

SE-4, 16 JUN 2022 to 14 JUL 2022