

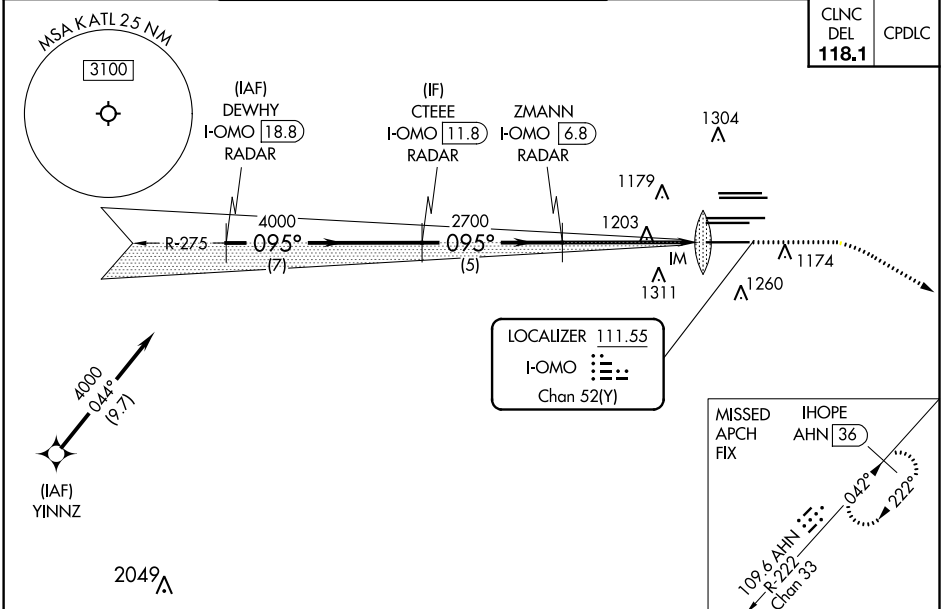
LOC/DME I-OMO <b>111.55</b>	APP CRS <b>095°</b>	Rwy Idg <b>9000</b>
Chan <b>52 (Y)</b>		TDZE <b>1000</b>
		Apt Elev <b>1026</b>

# ILS or LOC RWY 10

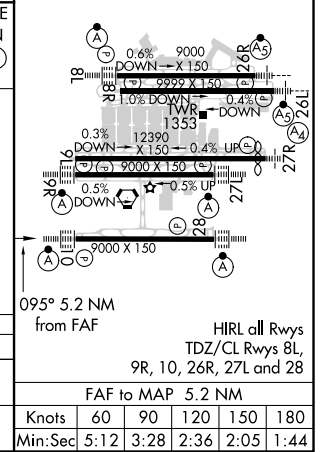
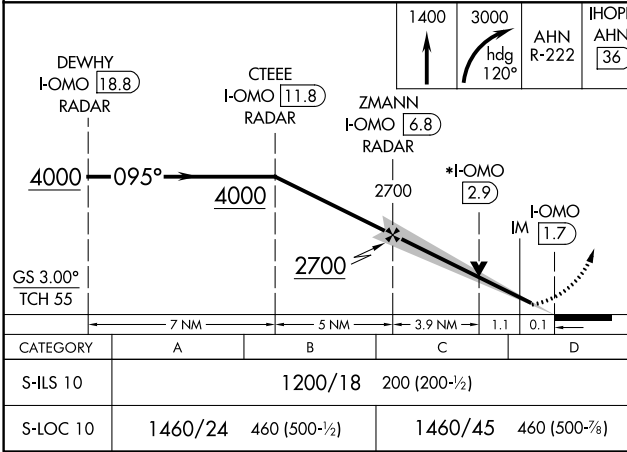
HARTSFIELD-JACKSON ATLANTA INTL (ATL)

DME or RADAR required. RNP APCH - GPS from YINNZ.		ALSF-2 	MISSED APPROACH: Climb to 1400 then dimbing right turn to 3000 on heading 120° and AHN R-222 to IHOPE/AHN 36 DME and hold.
<p>▼ Simultaneous approach authorized with Rwy 9L or 8R or 8L, or Rwys 9L and 8L. Localizer not suitable for electronic rollout guidance. Procedure NA when glide slope not available (ILS procedures only).</p>			

D-ATIS ARR <b>119.65</b>	ATLANTA APP CON <b>127.9 379.9</b>	ATLANTA TOWER 8L-26R 8R-26L 9L-27R 9R-27L 10-28 RWYS <b>119.1 125.325 123.85 119.3 119.5 254.4</b>	ALL RWYS <b>121.9</b>	GND CON (8L-26R,8R-26L) (9L-27R,9R-27L) 10-28 <b>121.75</b>	ALL RWYS <b>121.65 254.4</b>
-----------------------------	--	--	-----------------------------	---	------------------------------------



ELEV 1026	TDZE 1000
-----------	-----------



SE-4, 16 JUN 2022 to 14 JUL 2022

SE-4, 16 JUN 2022 to 14 JUL 2022