

LOC/DME I-HFW <b>109.3</b> Chan <b>30</b>	APP CRS <b>095°</b>	Rwy Idg <b>8800</b> TDZE <b>1015</b> Apt Elev <b>1026</b>
---	------------------------	---

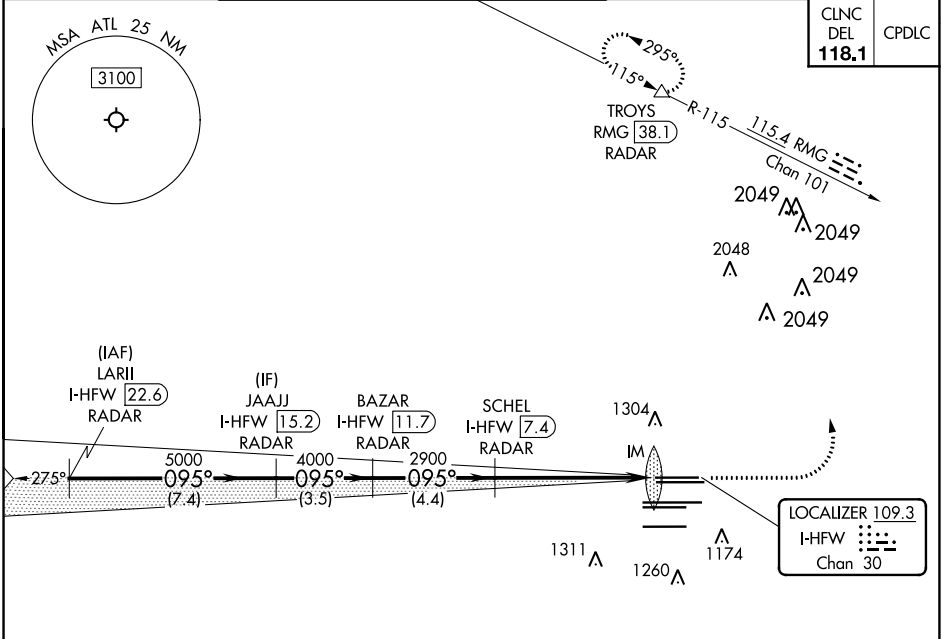
# ILS RWY 8L (CAT II & III)

HARTSFIELD-JACKSON ATLANTA INTL (ATL)

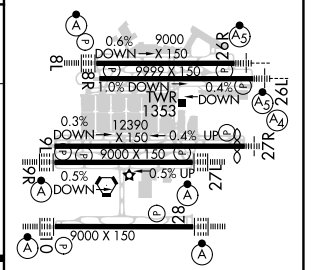
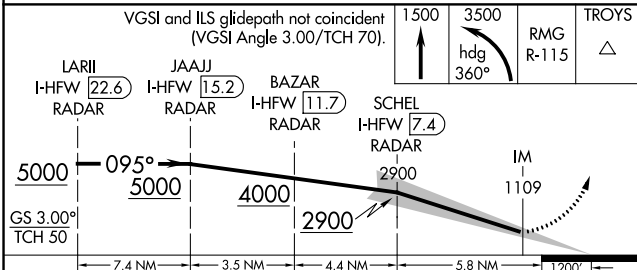
RADAR required for procedure entry. DME or RADAR required. **ALSIF-2** MISSED APPROACH: Climb to 1500 then climbing left turn to 3500 on heading 360° and RMG VORTAC R-115 to TROYS/RMG 38.1 DME/RADAR and hold.

Simultaneous approach authorized.

D-ATIS ARR <b>119.65</b>	ATLANTA APP CON DEP <b>127.9 379.9</b>	ATLANTA TOWER 8L-26R 8R-26L 9L-27R 9R-27L 10-28 RWYs <b>119.1 125.325 123.85 119.3 119.5 254.4</b>	ALL RWYs <b>121.9</b>	GND CON ALL RWYs <b>121.75 121.65 254.4</b>
-----------------------------	--	--	-----------------------------	--



ELEV 1026	<b>D</b> TDZE 1015
-----------	--------------------



CATEGORY	A	B	C	D
S-ILS 8L	CAT II RA 105/12 100 DA 1115			
S-ILS 8L	CAT III RVR 06			

**CATEGORY II & III ILS SPECIAL AIRCREW & AIRCRAFT CERTIFICATION REQUIRED**

HIRL all Rwy's  
TDZ/CL Rwy's 8L, 9R, 10, 26R, 27L and 28

SE-4, 16 JUN 2022 to 14 JUL 2022

SE-4, 16 JUN 2022 to 14 JUL 2022