

LOC/DME I-PKU <b>111.75</b> Chan <b>54(Y)</b>	APP CRS <b>275°</b>	Rwy ldg TDZE Apt Elev <b>9000</b> <b>998</b> <b>1026</b>
---	------------------------	---

# ILS RWY 28 (SA CAT I)

## HARTSFIELD-JACKSON ATLANTA INTL (ATL)

RNAV 1-GPS or RADAR required for procedure entry.  
From TERII: RNAV 1-GPS required. DME or RADAR required.

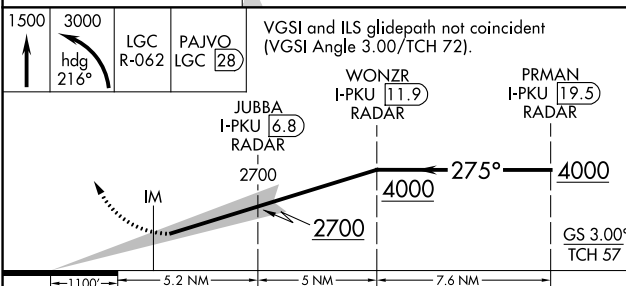
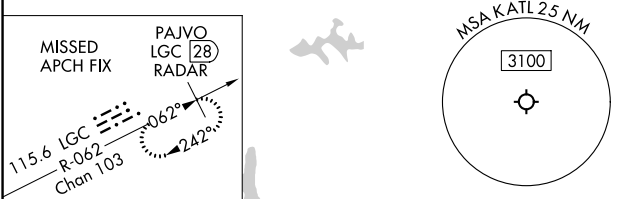
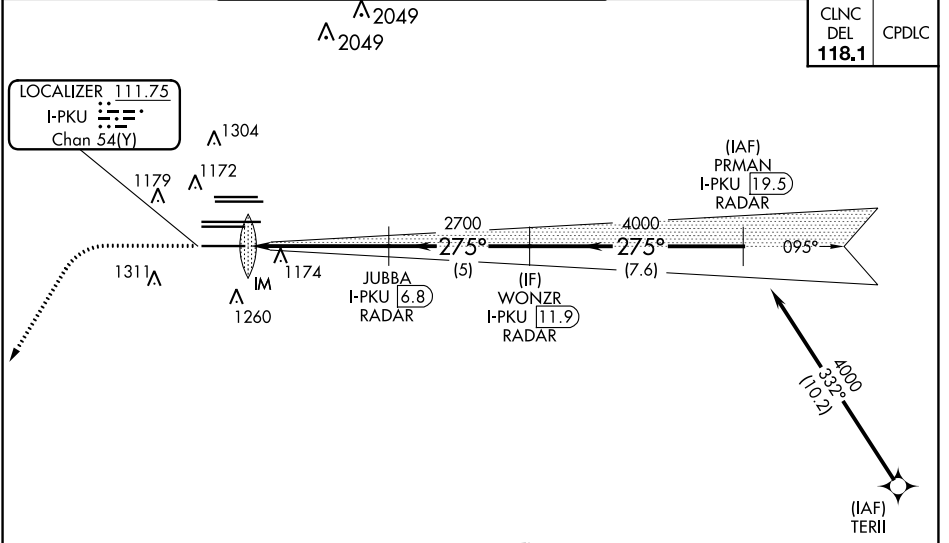
ALSIF-2

MISSED APPROACH: Climb to 1500 then climbing left turn to 3000 on heading 216° and LGC VORTAC R-062 to PAJVO/LGC 28 DME/RADAR and hold.

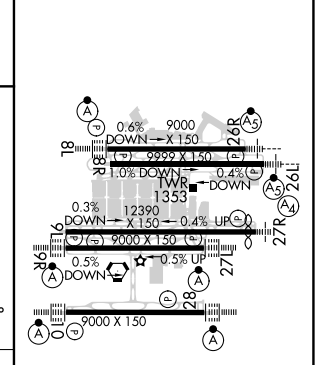
Simultaneous approach authorized.  
Requires specific OPSPEC, MSPEC, or LOA approval.

D-ATIS ARR <b>119.65</b>	ATLANTA APP CON	ATLANTA TOWER				ALL RWYS	GND CON	ALL RWYS
DEP <b>125.55</b>	<b>127.9 379.9</b>	8L-26R	8R-26L	9L-27R	9R-27L	10-28	(8L-26R,8R-26L) (9L-27R,9R-27L)	10-28
		<b>119.1 125.325 123.85 119.3 119.5 254.4</b>			<b>121.9</b>	<b>121.75</b>	<b>121.65</b>	<b>254.4</b>

CLNC DEL	CPDLC
<b>118.1</b>	



ELEV 1026	TDZE 998
-----------	----------



SA CATEGORY I ILS - SPECIAL AIRCREW & AIRCRAFT CERTIFICATION REQUIRED

RA 264/14 150 DA 1148

HIRL all Rwys  
TDZ/CL Rwys 8L, 9R, 10, 26R, 27L and 28

SE-4, 16 JUN 2022 to 14 JUL 2022

SE-4, 16 JUN 2022 to 14 JUL 2022