

ATLANTA, GEORGIA

AL-26 (FAA)

22139

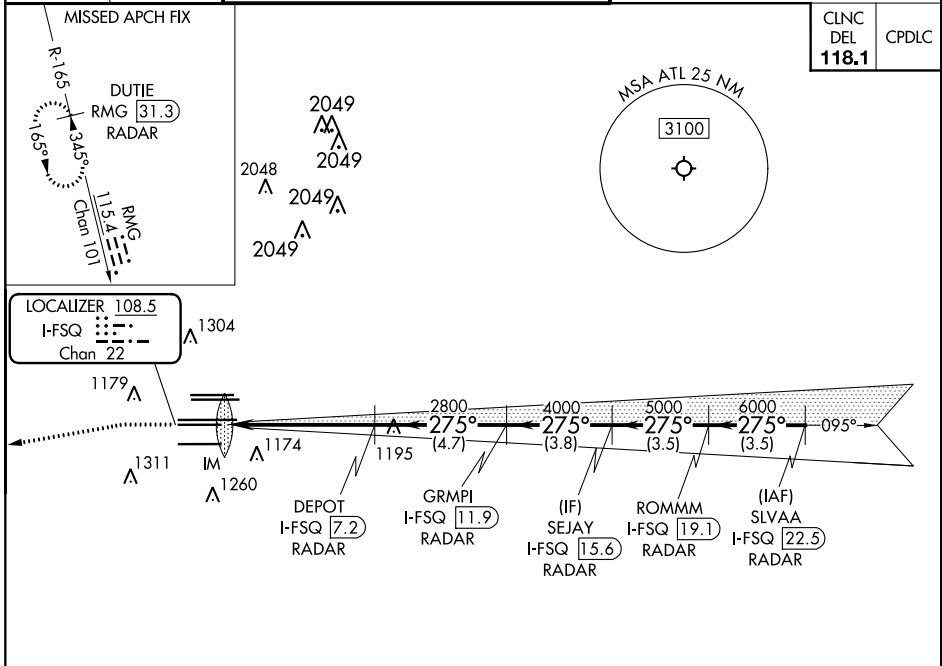
LOC/DME I-FSQ 108.5 Chan 22	APP CRS 275°	Rwy ldg TDZE Apt Elev	8865 999 1026
--	------------------------	-----------------------------	--

ILS RWY 27L (SA CAT I)

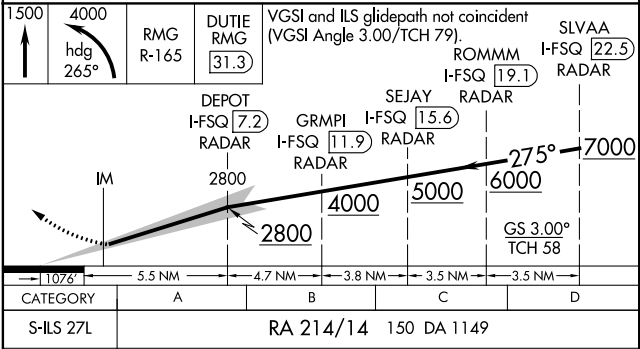
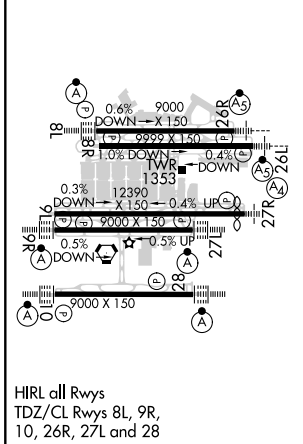
HARTSFIELD-JACKSON ATLANTA INTL (ATL)

DME or RADAR required. RADAR required for procedure entry.		ALSF-2	MISSED APPROACH: Climb to 1500 then climbing left turn to 4000 on heading 265° and RMG VORTAC R-165 to DUTIE/RMG 31.3 DME/RADAR and hold.
Simultaneous approach authorized. Requires specific OPSPEC, MSPEC, or LOA approval.			

D-ATIS ARR 119.65	ATLANTA APP CON	ATLANTA TOWER				ALL RWYS	GND CON	ALL RWYS
DEP 125.55	127.9 379.9	8L-26R	8R-26L	9L-27R	9R-27L	10-28	(8L-26R,8R-26L) (9L-27R,9R-27L)	10-28
		119.1	125.325	123.85	119.3	119.5	254.4	121.9
								121.75
								121.65
								254.4



ELEV 1026	D	TDZE 999
-----------	----------	----------



SA CATEGORY I ILS- SPECIAL AIRCREW & AIRCRAFT CERTIFICATION REQUIRED

ATLANTA, GEORGIA
Amdt 19 22APR21

HARTSFIELD-JACKSON ATLANTA INTL (ATL)
33°38'N-84°26'W

ILS RWY 27L (SA CAT I)

SE-4, 16 JUN 2022 to 14 JUL 2022

SE-4, 16 JUN 2022 to 14 JUL 2022