

ATLANTA, GEORGIA

AL-26 (FAA)

22139

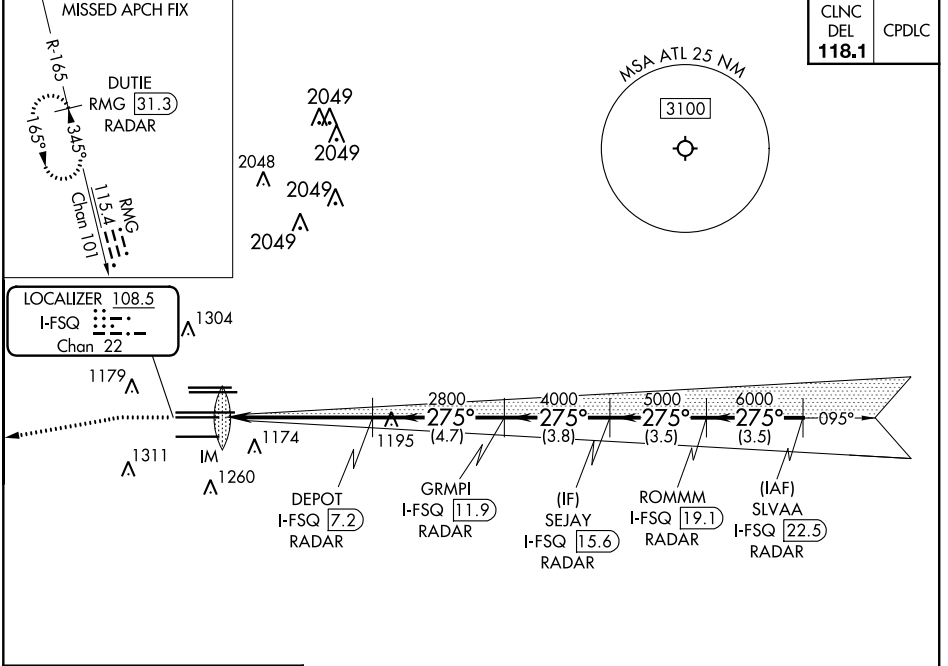
LOC/DME I-FSQ 108.5 Chan 22	APP CRS 275°	Rwy Idg TDZE Apt Elev	8865 999 1026
------------------------------------------	------------------------	-----------------------------	------------------------------------------

ILS RWY 27L (CAT II)

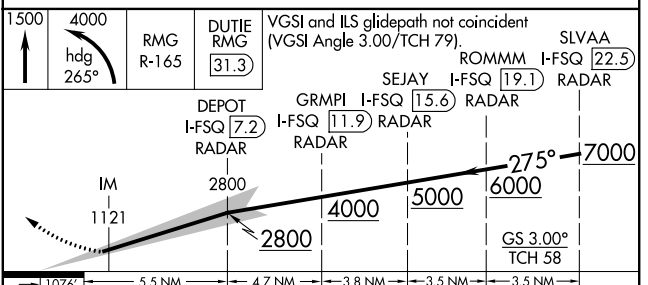
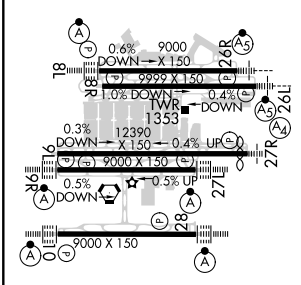
HARTSFIELD-JACKSON ATLANTA INTL (ATL)

DME or RADAR required. RADAR required for procedure entry.		ALSIF-2	MISSED APPROACH: Climb to 1500 then climbing left turn to 4000 on heading 265° and RMG VORTAC R-165 to DUTIE/RMG 31.3 DME/RADAR and hold.
Simultaneous approach authorized.			

D-ATIS ARR 119.65	ATLANTA APP CON 127.9 379.9	ATLANTA TOWER					ALL RWYS	GND CON	ALL RWYS		
DEP 125.55		8L-26R	8R-26L	9L-27R	9R-27L	10-28	(8L-26R, 8R-26L)	(9L-27R, 9R-27L)	10-28		
		119.1	125.325	123.85	119.3	119.5	254.4	121.9	121.75	121.65	254.4



ELEV 1026	D	TDZE 999
-----------	----------	----------



CATEGORY	A	B	C	D
S-ILS 27L	RA 127/12 100 DA 1099			

CATEGORY II ILS- SPECIAL AIRCREW & AIRCRAFT CERTIFICATION REQUIRED

ATLANTA, GEORGIA
Amdt 19 22APR21

HARTSFIELD-JACKSON ATLANTA INTL (ATL)

33°38'N-84°26'W

ILS RWY 27L (CAT II)

SE-4, 16 JUN 2022 to 14 JUL 2022

SE-4, 16 JUN 2022 to 14 JUL 2022