

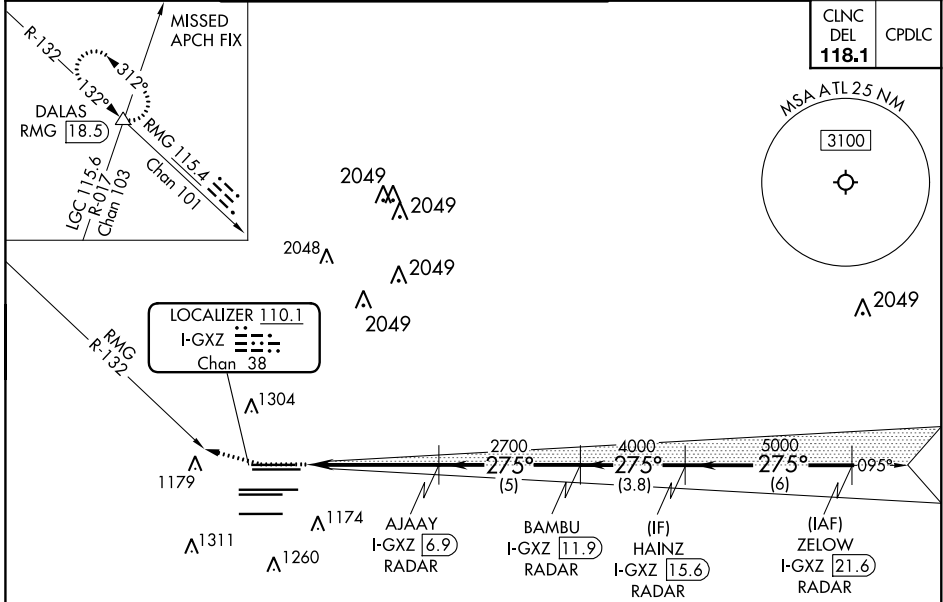
LOC/DME I-GXZ <b>110.1</b> Chan <b>38</b>	APP CRS <b>275°</b>	Rwy ldg TDZE Apt Elev <b>8500</b> <b>990</b> <b>1026</b>
---	------------------------	---

# ILS RWY 26R (SA CAT I & II)

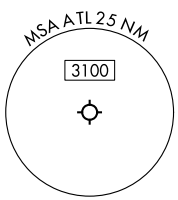
HARTSFIELD-JACKSON ATLANTA INTL (ATL)

RADAR required.		MALSR	MISSED APPROACH: Climb to 1800 then climbing right turn to 4000 on RMG VORTAC R-132 to DALAS INT/RMG 18.5 DME and hold.
SA CAT I/II: Requires specific OPSPEC, MSPEC, or LOA approval. Simultaneous approach authorized.			

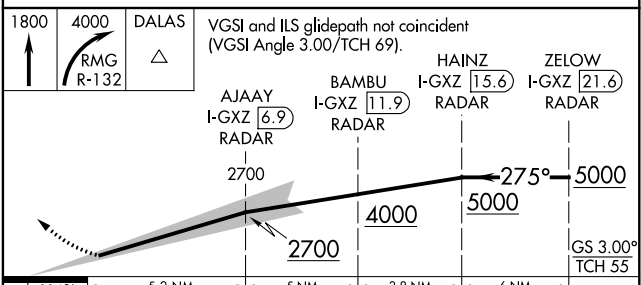
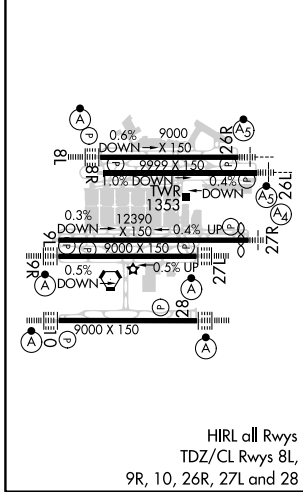
D-ATIS ARR <b>119.65</b>	ATLANTA APP CON DEP <b>127.9 379.9</b>	ATLANTA TOWER 8L-26R 8R-26L 9L-27R 9R-27L 10-28 RWYS <b>119.1 125.325 123.85 119.3 119.5 254.4</b>	ALL RWYS <b>121.9</b>	GND CON (8L-26R,8R-26L) (9L-27R,9R-27L) 10-28 RWYS <b>121.75 121.65 254.4</b>	ALL RWYS
-----------------------------	--	--	-----------------------------	---	-------------



CLNC DEL <b>118.1</b>	CPDLC
-----------------------------	-------



ELEV 1026	<b>D</b>	TDZE 990
-----------	----------	----------



CATEGORY	A	B	C	D
S-ILS 26R	SA CAT I	RA 170/14	150 DA 1140	
S-ILS 26R	SA CAT II	RA 110/12	100 DA 1090	

**SA CATEGORY I & II ILS - SPECIAL AIRCREW & AIRCRAFT CERTIFICATION REQUIRED**

SE-4, 16 JUN 2022 to 14 JUL 2022

SE-4, 16 JUN 2022 to 14 JUL 2022