

LOC/DME I-OMO <b>111.55</b> Chan <b>52 (Y)</b>	APP CRS <b>095°</b>	Rwy ldg <b>9000</b> TDZE <b>1000</b> Apt Elev <b>1026</b>
--	------------------------	--

# ILS RWY 10 (SA CAT I)

HARTSFIELD-JACKSON ATLANTA INTL (ATL)

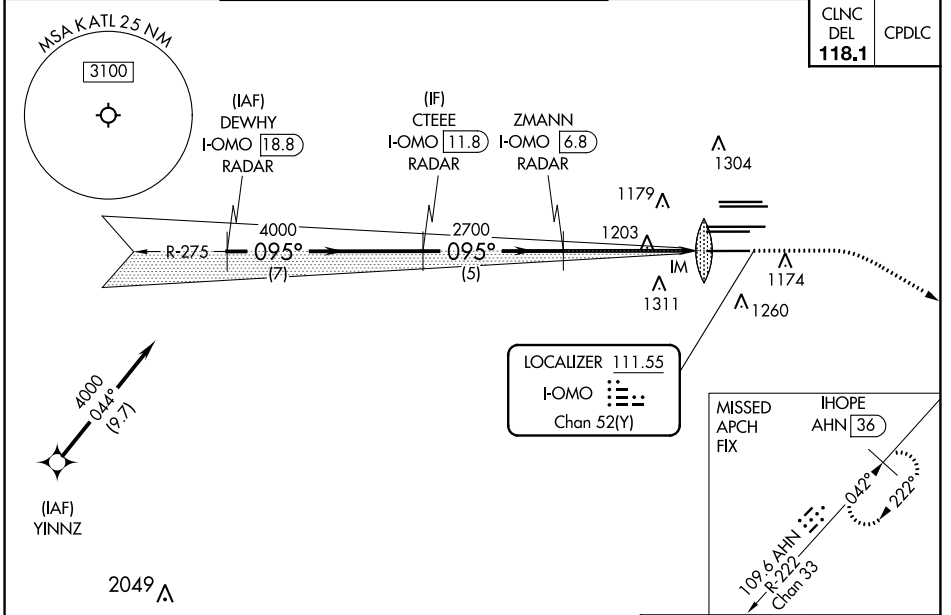
DME or RADAR required. RNP APCH - GPS from YINNZ.

Simultaneous approach authorized with Rwy 9L or 8R or 8L, or Rwy 9L and 8L. Procedure NA when glide slope not available (ILS procedures only). Requires specific OPSPEC, MSPEC, or LOA approval and use of HUD to DH.

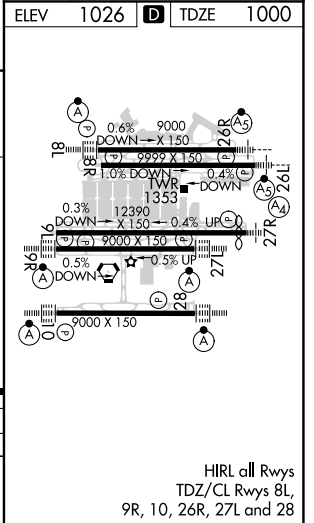
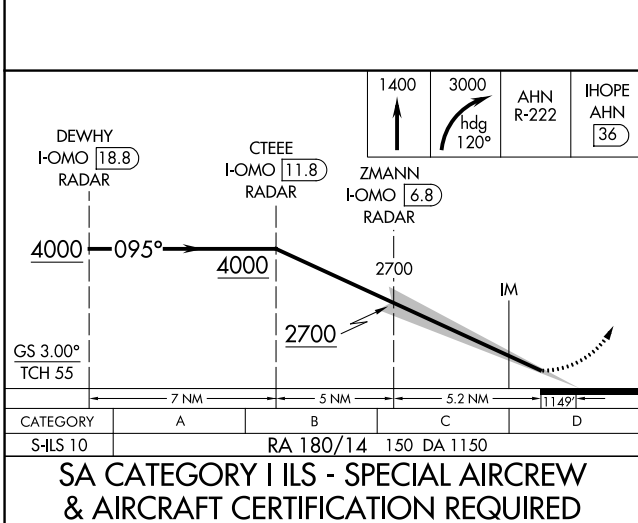
ALSf-2

MISSED APPROACH: Climb to 1400 then climbing right turn to 3000 on heading 120° and AHN R-222 to IHOPE/AHN 36 DME and hold.

D-ATIS ARR <b>119.65</b>	ATLANTA APP CON <b>127.9 379.9</b>	ATLANTA TOWER 8L-26R 8R-26L 9L-27R 9R-27L 10-28 RWYS <b>119.1 125.325 123.85 119.3 119.5 254.4</b>				ALL RWYS <b>121.9</b>	GND CON 8L-26R,8R-26L 9L-27R,9R-27L 10-28 RWYS <b>121.75</b>	ALL RWYS <b>121.65 254.4</b>
-----------------------------	--	--	--	--	--	-----------------------------	--	------------------------------------



CLNC DEL	CPDLC
<b>118.1</b>	



SE-4, 16 JUN 2022 to 14 JUL 2022

SE-4, 16 JUN 2022 to 14 JUL 2022