

LOC/DME I-OMO 111.55 Chan 52 (Y)	APP CRS 095°	Rwy Idg 9000 TDZE 1000 Apt Elev 1026
--	------------------------	---

ILS RWY 10 (CAT II & III)

HARTSFIELD-JACKSON ATLANTA INTL (ATL)

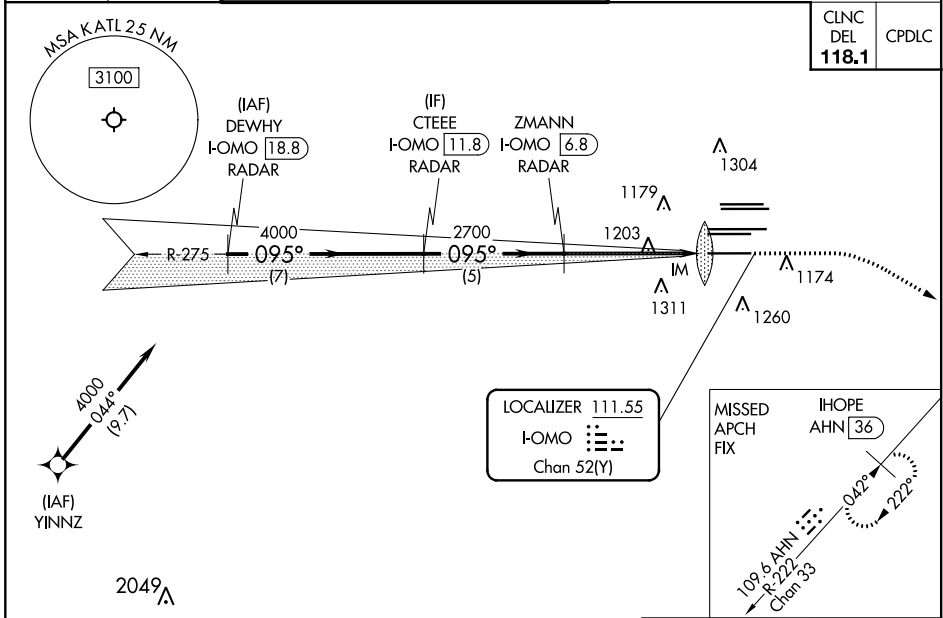
DME or RADAR required. RNP APCH - GPS from YINNZ.

Simultaneous approach authorized with Rwy 9L or 8R or 8L, or Rwys 9L and 8L. Procedure NA when glide slope not available (ILS procedures only).

ALSF-2

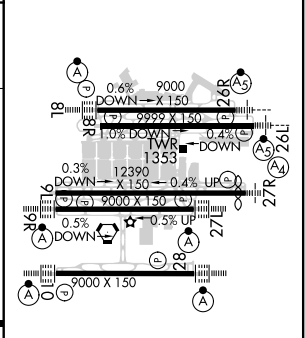
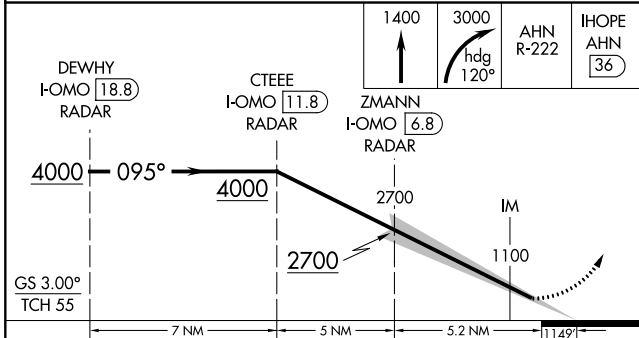
MISSED APPROACH: Climb to 1400 then climbing right turn to 3000 on heading 120° and AHN R-222 to IHOPE/AHN 36 DME and hold.

D-ATIS ARR 119.65	ATLANTA APP CON 127.9 379.9	ATLANTA TOWER 8L-26R 8R-26L 9L-27R 9R-27L 10-28 RWYYS 119.1 125.325 123.85 119.3 119.5 254.4	ALL RWYYS 121.9 121.75 121.65 254.4	GND CON 8L-26R,8R-26L 9L-27R,9R-27L 10-28 RWYYS 121.9 121.75 121.65 254.4
-----------------------------	--	---	--	--



CLNC DEL 118.1	CPDLC
-----------------------------	-------

ELEV 1026	D	TDZE 1000
------------------	----------	------------------



CATEGORY	A	B	C	D
S-ILS 10	CAT II RA 110/12		100 DA 1100	
S-ILS 10	CAT III		RVR 07	

CATEGORY II & III ILS - SPECIAL AIRCREW & AIRCRAFT CERTIFICATION REQUIRED

HIRL all Rwys
TDZ/CL Rwys 8L,
9R, 10, 26R, 27L and 28

SE-4, 16 JUN 2022 to 14 JUL 2022

SE-4, 16 JUN 2022 to 14 JUL 2022