

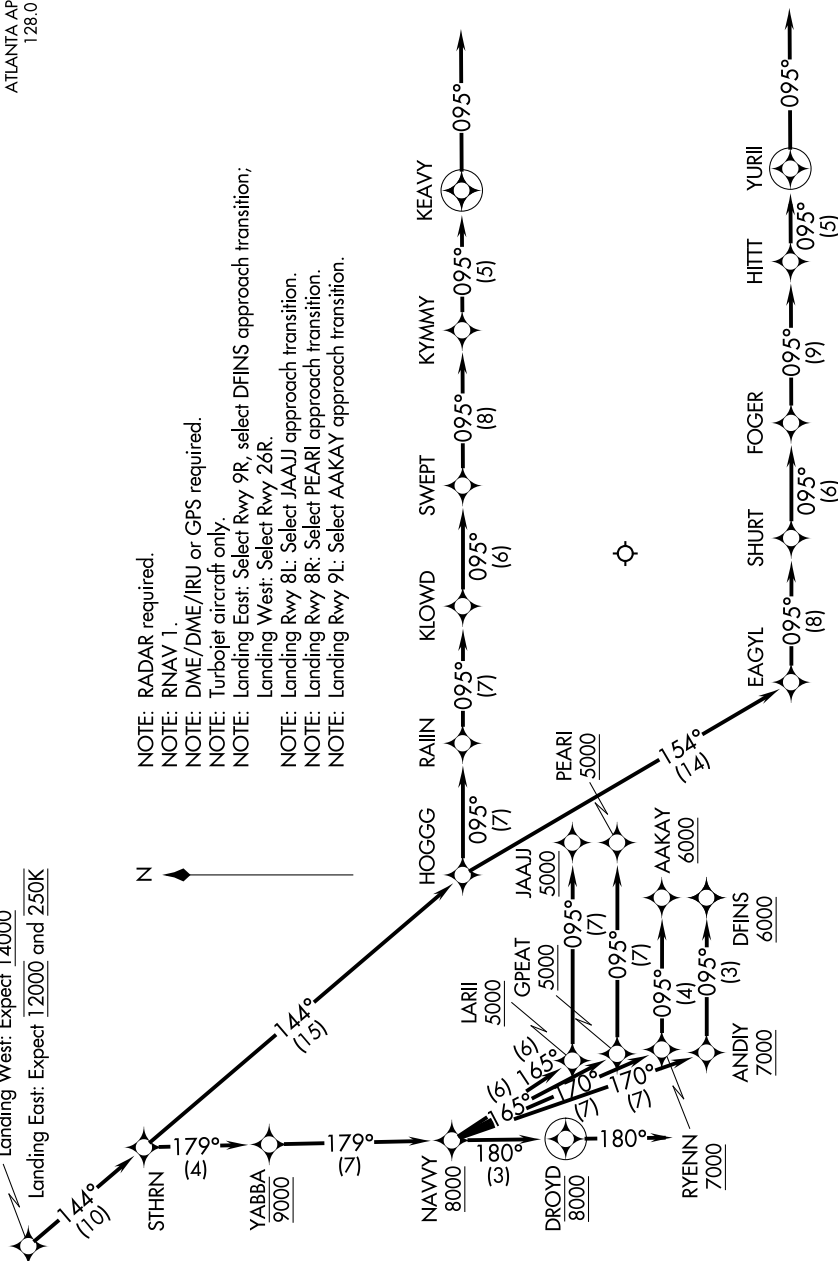
# GLAVN ONE ARRIVAL (RNAV) Arrival Routes

SE-4, 16 JUN 2022 to 14 JUL 2022

D-ATIS ARR  
119.65  
ATLANTA APP CON  
128.0 379.9

GLAVN  
Landing West: Expect 14000  
Landing East: Expect 12000 and 250K

- NOTE: RADAR required.
- NOTE: RNAV 1.
- NOTE: DME/DME/IRU or GPS required.
- NOTE: Turbopjet aircraft only.
- NOTE: Landing East: Select Rwy 9R, select DFINS approach transition;
- NOTE: Landing West: Select Rwy 26R.
- NOTE: Landing Rwy 8L: Select JAAJJ approach transition.
- NOTE: Landing Rwy 8R: Select PEARL approach transition.
- NOTE: Landing Rwy 9L: Select AAKAY approach transition.



(NARRATIVE CONTINUED ON FOLLOWING PAGE)

NOTE: Chart not to scale.

SE-4, 16 JUN 2022 to 14 JUL 2022

# GLAVN ONE ARRIVAL (RNAV) Arrival Routes