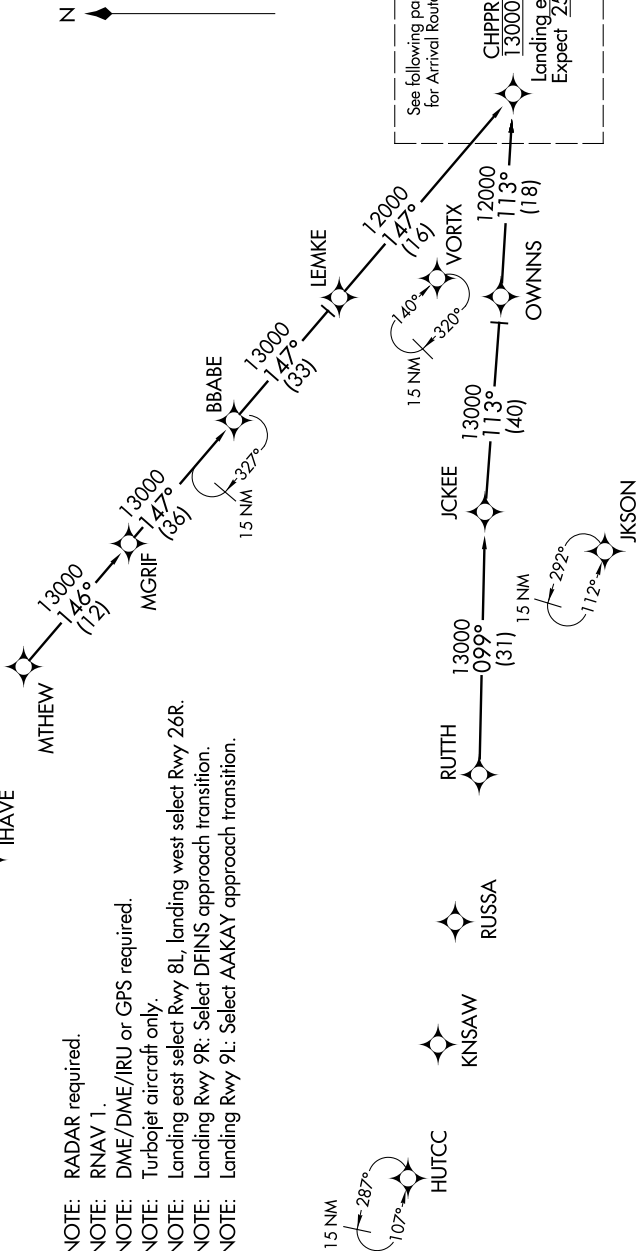


CHPPR ONE ARRIVAL (RNAV) Transition Routes

SE-4, 16 JUN 2022 to 14 JUL 2022

D-ATIS ARR  
119.65  
ATLANTA APP CON  
128.0 379.9

**BBABE TRANSITION (BBABE.CHPPR1):** For KHSV departures or assigned by ATC only.  
**LEMKE TRANSITION (LEMKE.CHPPR1):** For KCHA departures or assigned by ATC only.  
**MTHW TRANSITION (MTHW.CHPPR1)**  
**RUITH TRANSITION (RUITH.CHPPR1)**



- NOTE: RADAR required.
- NOTE: RNAV 1.
- NOTE: DME/DME/IRU or GPS required.
- NOTE: Turbojet aircraft only.
- NOTE: Landing east select Rwy 8L, landing west select Rwy 26R.
- NOTE: Landing Rwy 9R: Select DFINS approach transition.
- NOTE: Landing Rwy 9L: Select AAKAY approach transition.

(CONTINUED ON FOLLOWING PAGES)

NOTE: Chart not to scale.

SE-4, 16 JUN 2022 to 14 JUL 2022