

WAAS CH 69625 W31A	APP CRS 309°	Rwy Idg TDZE Apt Elev	9002 733 777
--	------------------------	-----------------------------	---

RNAV (GPS) RWY 31

ARDMORE MUNI (ADM)

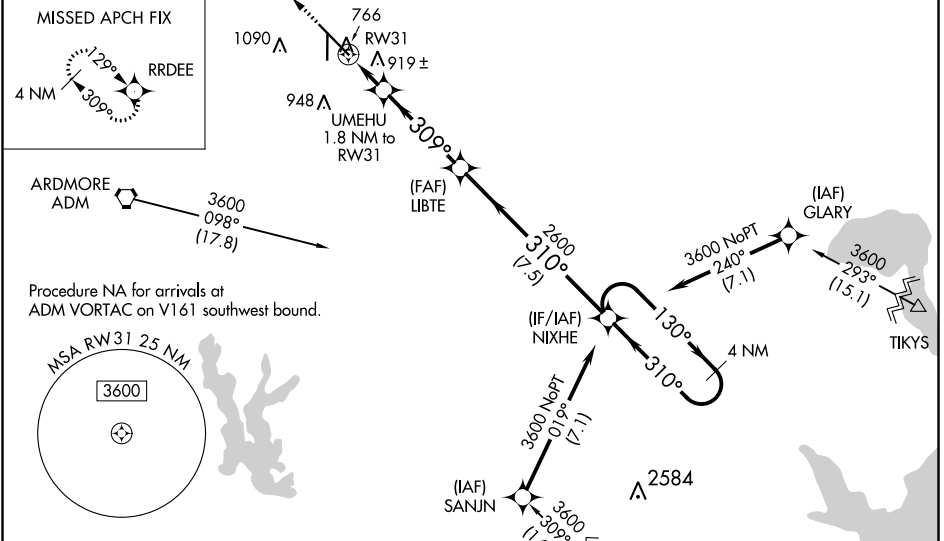
RNP APCH.

▼ For uncompensated Baro-VNAV systems, LNAV/VNAV NA below -16°C or above 54°C. When local altimeter setting not received, use Ardmore Downtown Exec altimeter setting; increase LPV DA to 1026 feet; increase LNAV/VNAV DA to 1276 feet and all visibilities ½ SM; increase all MDAs 40 feet. Inop table does not apply to LPV, all Cats and LNAV Cats A and B. When using Ardmore Downtown Exec altimeter setting, inop table does not apply to LPV all Cats and LNAV Cats A and B. For inop ALS, increase LNAV Cats C and D visibility to 1½ SM. For inop ALS, when using Ardmore Downtown Exec altimeter setting, increase LNAV Cats C and D to 1½ SM. VDP NA when using Ardmore Downtown Exec altimeter setting. Rwy 31 helicopter visibility reduction below ¾ SM NA. Rwy 13, 35 helicopter visibility reduction below 1 SM NA. Circling Rwy 13, 35 NA at night.

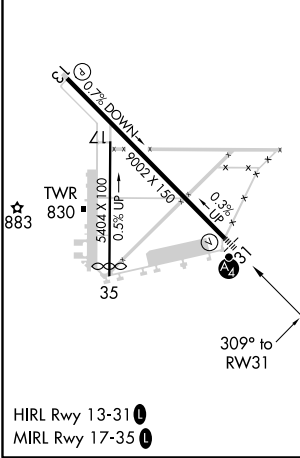
MALS

MISSED APPROACH:
Climb to 3600 direct RRDEE and hold.

ATIS 125.6	FORT WORTH CENTER 124.75 323.0	ARDMORE TOWER* 118.5 (CTAF) 0 257.7	GND CON 121.8	UNICOM 122.95
----------------------	--	---	-------------------------	-------------------------



ELEV 777	D	TDZE 733
----------	----------	----------



CATEGORY	A	B	C	D
LPV DA		991-1	258 (300-1)	
LNAV/VNAV DA		1241-1¼	508 (500-1¼)	
LNAV MDA		1180-1	447 (500-1)	
CIRCLING	1380-1 603 (700-1)	1440-1 663 (700-1)	1460-2 683 (700-2)	1700-3 923 (1000-3)

SC-1, 16 JUN 2022 to 14 JUL 2022

SC-1, 16 JUN 2022 to 14 JUL 2022