

LOC I-AIW 108.9	APP CRS 309°	Rwy Idg 9002
		TDZE 733
		Apt Elev 777

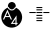
ILS or LOC RWY 31

ARDMORE MUNI (ADM)

⚠ Autopilot coupled approach NA below 1360. When local altimeter setting not received, use Ardmore Downtown Exec altimeter setting: increase DA to 1026 feet and all MDAs 40 feet.

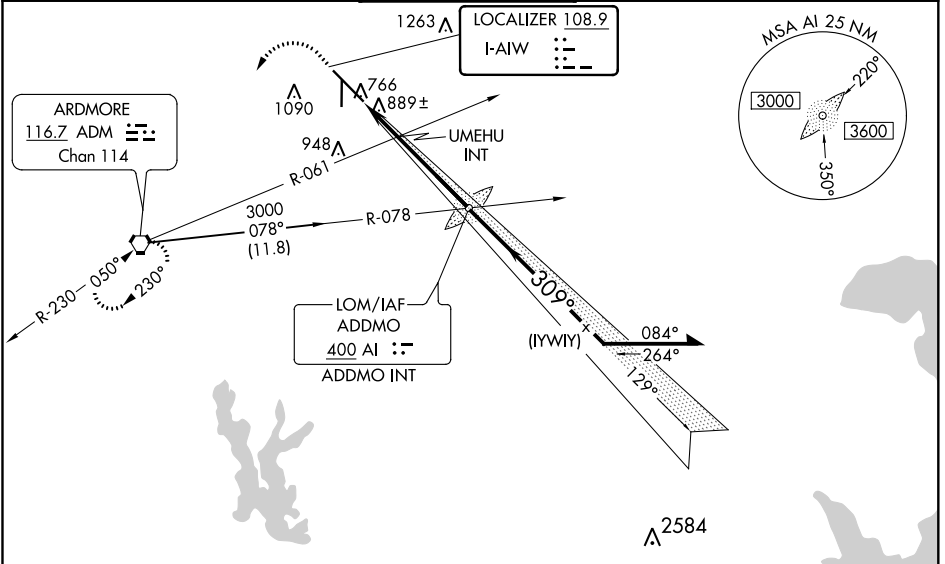
⚠ Inop table does not apply to S-ILS 31 all Cats, S-LOC 31 Cats A and B; UMEHU FIX MINIMUMS S-LOC 31 Cats A and B. When using Ardmore Downtown Exec altimeter setting, inop table does not apply to S-ILS 31 all Cats, S-LOC 31 Cats A and B; UMEHU FIX MINIMUMS S-LOC 31 Cats A and B. For inop ALS, increase UMEHU FIX MINIMUMS S-LOC 31 Cats C and D visibility to 1 1/2 SM. When using Ardmore Downtown Exec altimeter setting, for inop ALS, increase UMEHU FIX MINIMUMS Cats C and D visibility to 1 1/2 SM. Circling Rwy 13, 35 NA at night. Rwy 13, 35 helicopter visibility reduction below 1 SM NA. Rwy 31 helicopter visibility reduction below 3/4 SM NA.

MALS

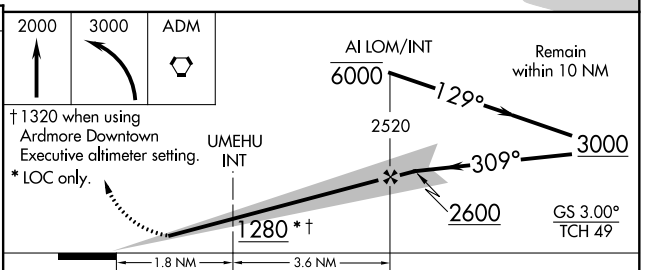
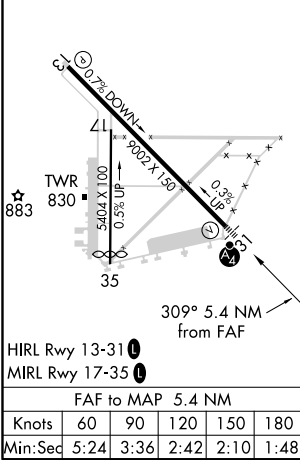


MISSED APPROACH:
Climb to 2000 then
climbing left turn to
3000 direct ADM
VORTAC and hold.

ATIS 125.6	FORT WORTH CENTER 124.75 323.0	ARDMORE TOWER ★ 118.5 (CTAF) 257.7	GND CON 121.8	UNICOM 122.95
----------------------	--	--	-------------------------	-------------------------



ELEV 777	D	TDZE 733
----------	----------	----------



CATEGORY	A	B	C	D
S-ILS 31	991-1 258 (300-1)			
S-LOC 31	1280-1	547 (600-1)	1280-1 1/2	547 (600-1 1/2)
CIRCLING	1380-1 603 (700-1)	1440-1 663 (700-1)	1460-2 683 (700-2)	1700-3 923 (1000-3)
UMEHU FIX MINIMUMS (DUAL VOR RECEIVERS REQUIRED)				
S-LOC 31	1140-1 407 (400-1)			
CIRCLING	1380-1 603 (700-1)	1440-1 663 (700-1)	1460-2 683 (700-2)	1700-3 923 (1000-3)

SC-1, 16 JUN 2022 to 14 JUL 2022

SC-1, 16 JUN 2022 to 14 JUL 2022