

# HI-TACAN Z RWY 33

TACAN BAB Chan 23	APCH CRS 317°	Rwy ldg 12,001
		TDZE 105
		Arprt Elev 113

JAL-771 (USAF)

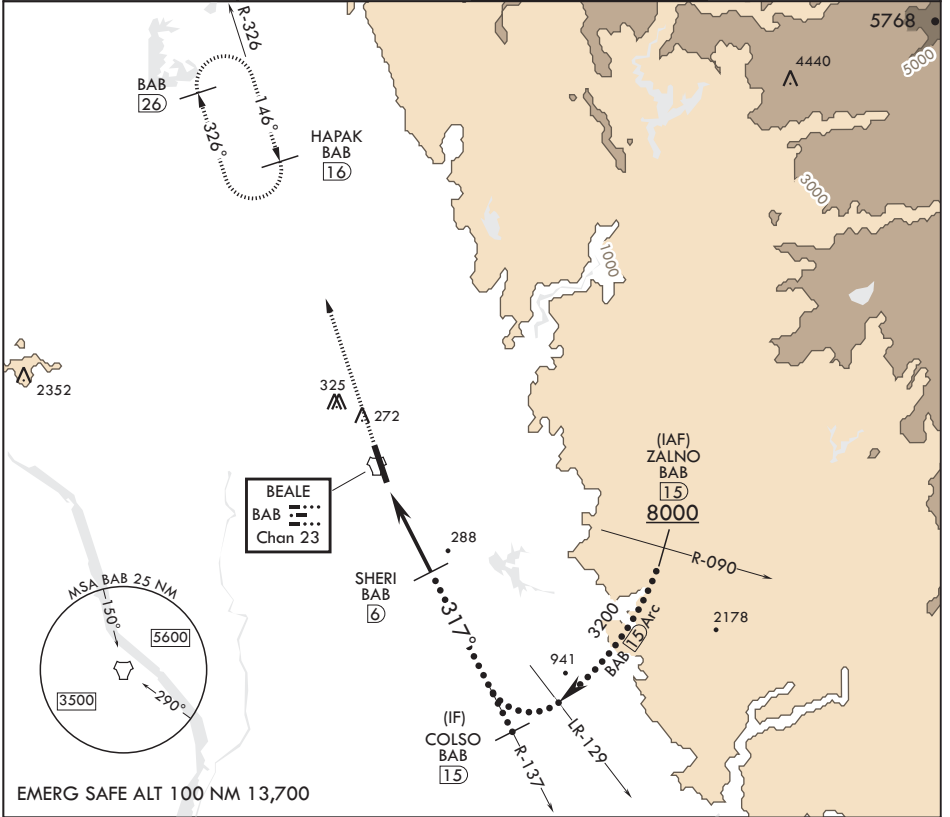
BEALE AFB (KBAB)

⚠ \* When ALS inop, increase CAT CDE vis to 1 1/4 miles.  
\*\* Circling not authorized E of Rwy 15-33

ⓐ1 ⓐ1 ⓐ1

ⓐ1 MISSED APPROACH: Climb to 3600, intercept BAB TACAN R-326 to HAPAK and hold.

ATIS* 124.55 273.5	NORCAL APP CON 125.4 259.1	TOWER* 119.4 284.75	GND CON 121.6 257.75
-----------------------	-------------------------------	------------------------	-------------------------



EMERG SAFE ALT 100 NM 13,700

3600 ↑ BAB ↑ R-326	HAPAK BAB 16	COLSO R-137 15	ELEV 113	TDZE 105
TACAN EGUYO 1.5 2.2 4.5 NM .5		SHERI 6 1800	COLSO 15 3200	BCN 240 TWR 274 13,001 x 300 33 317° to TACAN
CATEGORY S-33*		C	D	E
540/40		435	(500-3/4)	
600-1 1/2 487 (500-1 1/2)		680-2 567 (600-2)	840-2 1/2 727 (800-2 1/2)	
ⓐ1 CIRCLING**		HIRL all Rwys		

# HI-TACAN Z RWY 33

SW-2, 21 APR 2022 to 19 MAY 2022

SW-2, 21 APR 2022 to 19 MAY 2022