

JOE POOL FIVE DEPARTURE

TAKEOFF MINIMUMS

Rwy 34: Standard.

Rwy 16: 400-2½ or standard with minimum climb of 325' per NM to 1100.

ATIS
133.4
CLNC DEL
119.55
GND CON
121.6
ADDISON TOWER *
126.0 (CTAF) 239.0
REGIONAL DEP CON
124.3 282.275

MAVERICK
113.1 TTT
Chan 78
N32°52.15'
W97°02.43'

WACO
115.3 ACT
Chan 100
N31°39.73'
W97°16.14'
L-19, H-6

HOARY
N30°34.63'
W97°46.52'
L-19-21, H-7

CENTEX
112.8 CWK
Chan 75

SAN ANTONIO
116.8 SAT
Chan 115
N29°38.64'-W98°27.68'
L-19, H-7

COLLEGE STATION
113.3 CLL
Chan 80
N30°36.30'
W96°25.24'
L-19-21, H-7

WINDU
N31°31.83'
W97°04.95'
L-19, H-6

JASPA
N32°17.10'
W97°03.54'
L-17

NELYN
N32°17.10'
W97°11.15'

ELLVR
N31°42.49'
W96°50.27'
L-19, H-6

ARDIA
N32°17.10'
W96°56.27'
L-17

ARDIA
N32°17.10'
W96°56.27'
L-17

DARTZ
N32°17.15'
W96°48.66'

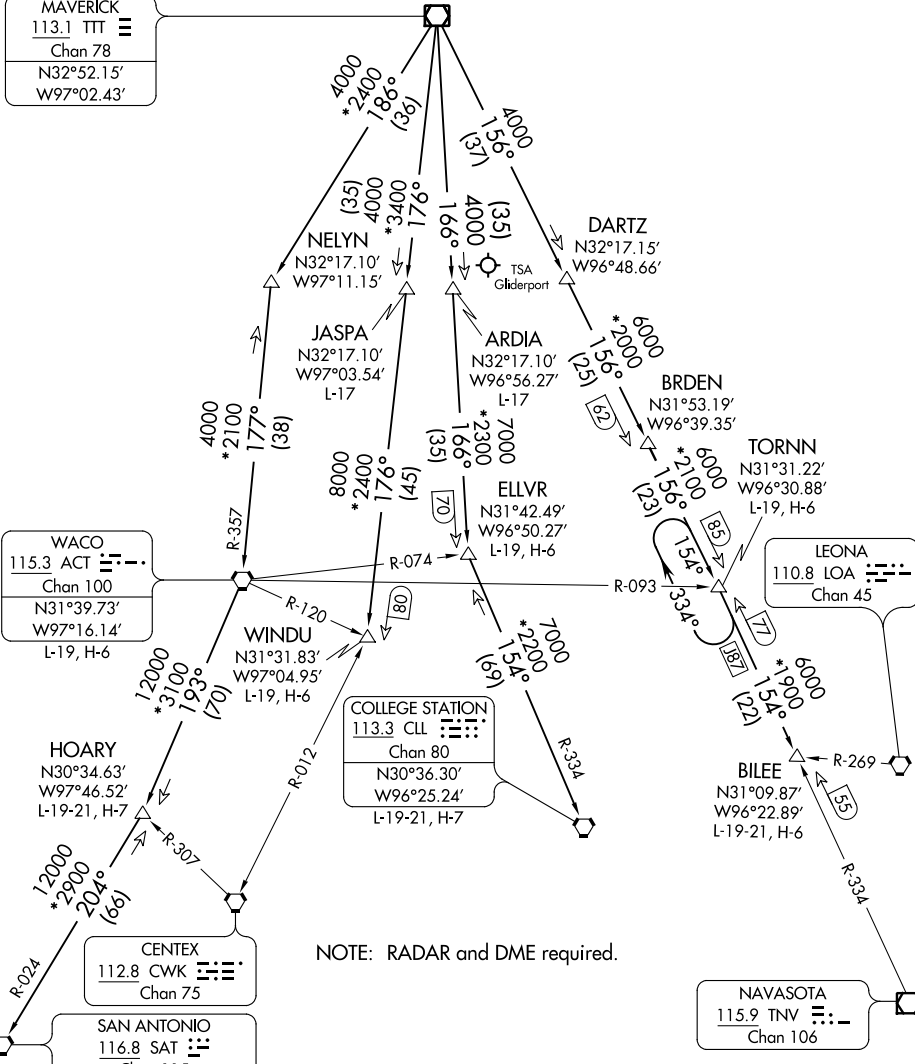
BRDEN
N31°53.19'
W96°39.35'

TORNN
N31°31.22'
W96°30.88'
L-19, H-6

LEONA
110.8 LOA
Chan 45

BILEE
N31°09.87'
W96°22.89'
L-19-21, H-6

NAVASOTA
115.9 TNV
Chan 106



NOTE: RADAR and DME required.

(NARRATIVE ON FOLLOWING PAGE)
(NOTES CONTINUED ON FOLLOWING PAGE)

NOTE: Chart not to scale.

SC-2, 21 APR 2022 to 19 MAY 2022

SC-2, 21 APR 2022 to 19 MAY 2022

JOE POOL FIVE DEPARTURE