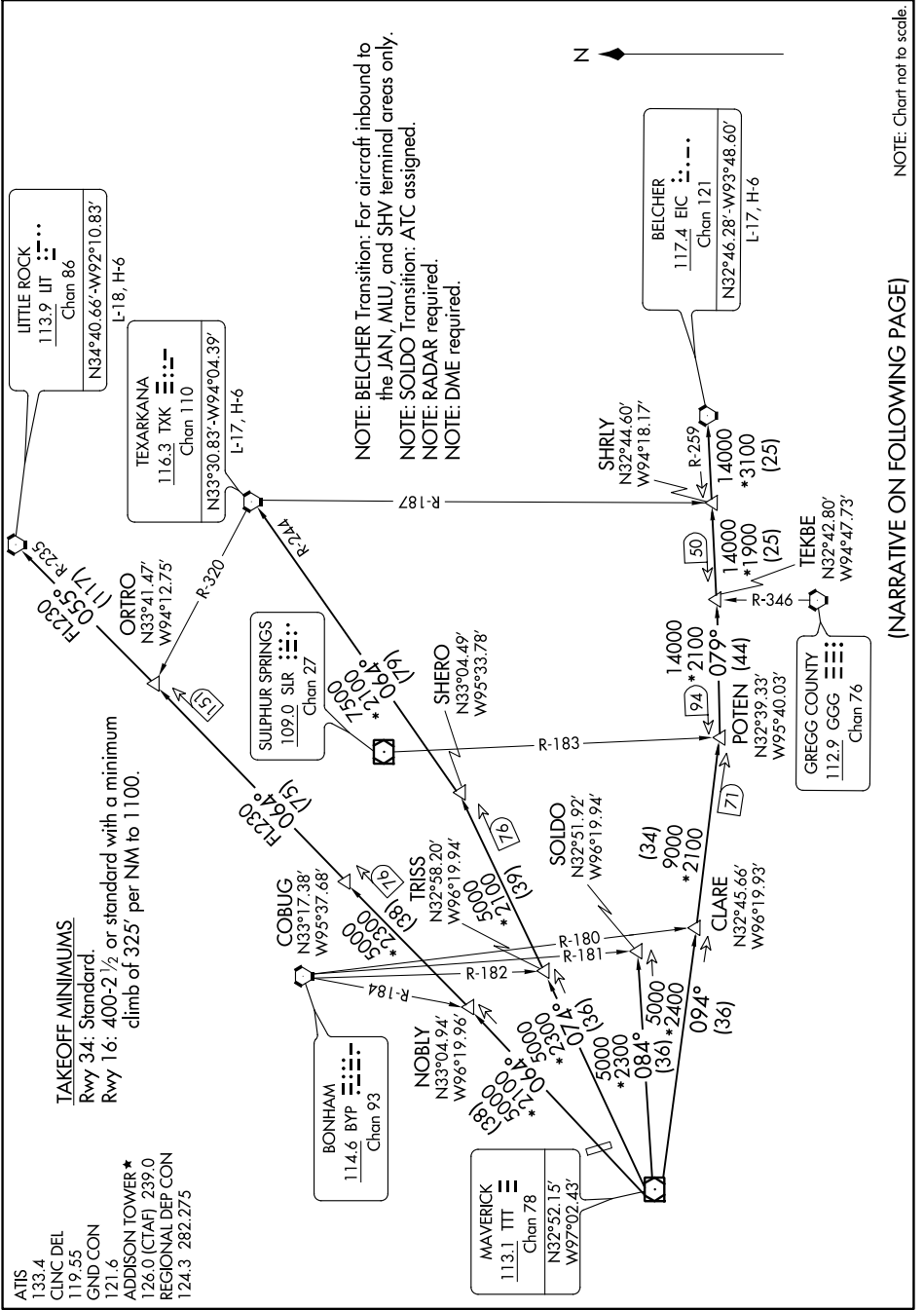


DALLAS ONE DEPARTURE

DALLAS, TEXAS

SC-2, 21 APR 2022 to 19 MAY 2022



NOTE: Chart not to scale.

(NARRATIVE ON FOLLOWING PAGE)

SC-2, 21 APR 2022 to 19 MAY 2022

DALLAS ONE DEPARTURE

DALLAS, TEXAS

TAKEOFF MINIMUMS

Rwy 34: Standard.
 Rwy 16: 400-2 1/2 or standard with a minimum
 climb of 325' per NM to 1100.

ADDISON TOWER*

126.0 (CTAF) 239.0
 REGIONAL DEP CON
 124.3 282.275

ATIS
 133.4
 CLNC DEL
 119.55
 GND CON
 121.6

NOTE: BELCHER Transition: For aircraft inbound to the JAIN, MLU, and SHV terminal areas only.
 NOTE: SOILDO Transition: ATC assigned.
 NOTE: RADAR required.
 NOTE: DME required.