

APP CRS 319°	Rwy Idg 3400
	TDZE 1226
	Apt Elev 1228

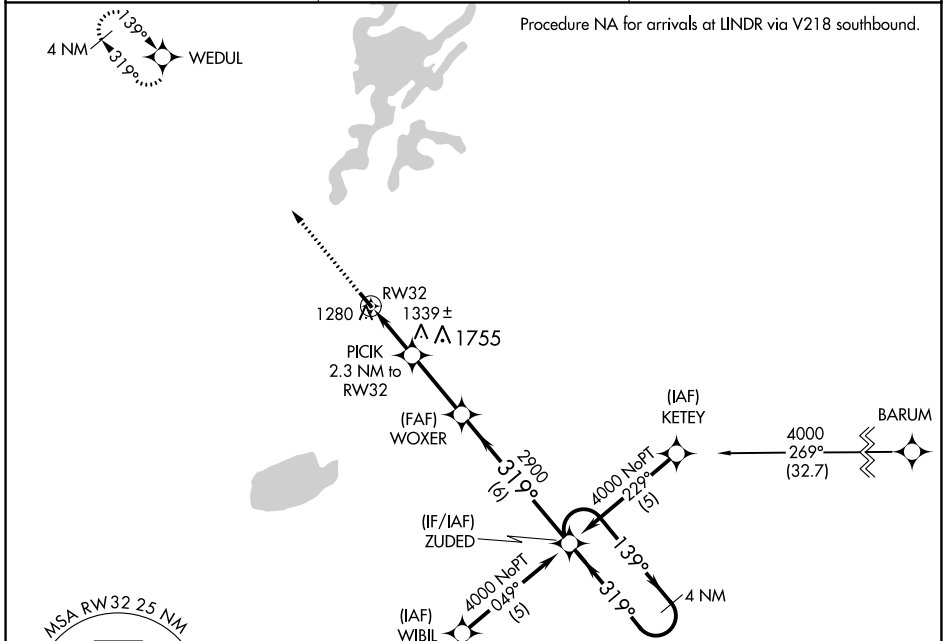
RNAV (GPS) RWY 32

ISEDOR IVERSON (HZZ)

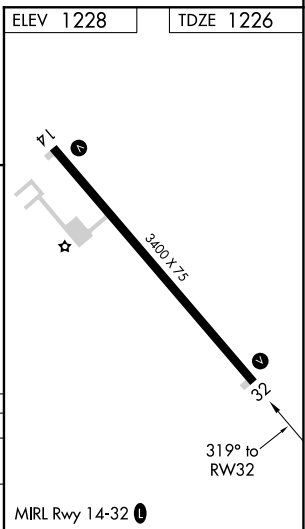
▼ DME/DME RNP-0.3 NA.
When local altimeter setting not received, use Aitkin altimeter setting and increase all MDAs 40 feet.
VDP NA when using Aitkin altimeter setting.

MISSED APPROACH: Climb to 4000 direct WEDUL and hold.

AWOS-3 119.575	MINNEAPOLIS CENTER 127.9 281.45	CTAF 122.9
--------------------------	---	----------------------



4000	WEDUL	VGSI and descent angles not coincident (VGSI Angle 3.00/TCH 19).		4 NM Holding Pattern
		PICIK 2.3 NM to RW32	WOXER	ZUDED
		1.1 NM to RW32	3.04° TCH 40	139° → 4000
		2000	2900	← 319°
		1.1	1.3 NM	2.8 NM
				6 NM
CATEGORY	A	B	C	D
RNAV MDA	1600-1	374 (400-1)		NA
CIRCLING	1660-1 432 (500-1)	1700-1 472 (500-1)		NA



NC-1, 30 DEC 2021 to 27 JAN 2022

NC-1, 30 DEC 2021 to 27 JAN 2022