

VORTAC TUL 114.4 Chan 91	APP CRS 060°	Rwy Idg TDZE Apt Elev	N/A N/A 733
--	------------------------	-----------------------------	--

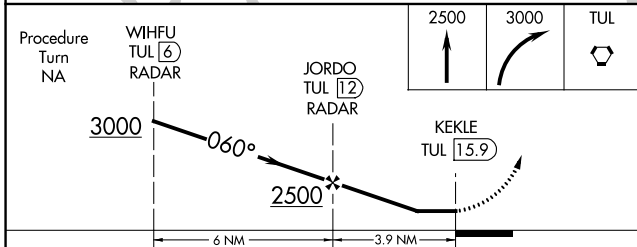
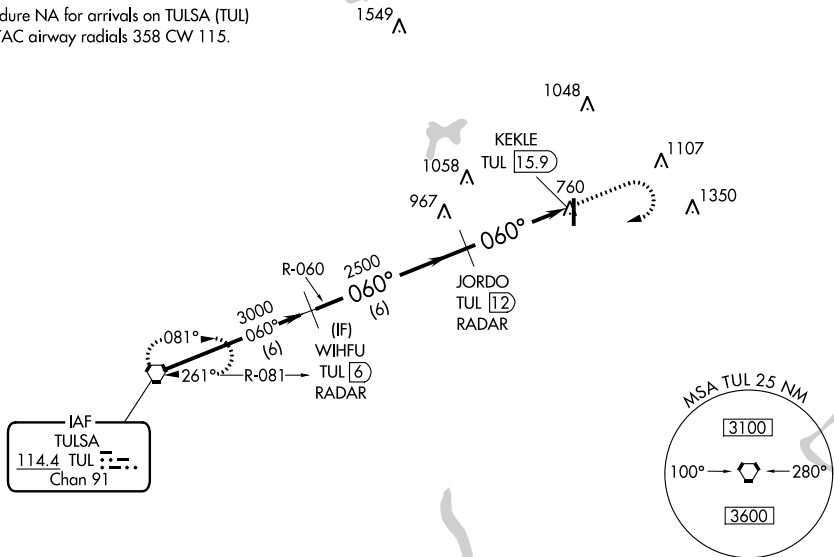
VOR/DME-B
CLAREMORE RGNL (GCM)

▽ If local altimeter setting not received, use Tulsa Intl altimeter setting and increase all MDAs 60 feet.

MISSED APPROACH: Climb to 2500 then climbing right turn to 3000 direct TUL VORTAC and hold.

AWOS-3P 119.925	TULSA APP CON 119.1 351.8	UNICOM 122.7 (CTAF) ①
---------------------------	-------------------------------------	---------------------------------

Procedure NA for arrivals on TULSA (TUL)
VORTAC airway radials 358 CW 115.



ELEV 733

Profile view diagram showing the vertical path of the aircraft. The diagram includes the following information:

- ELEV 733
- 060° 3.9 NM from FAF
- 0.7% UP climb gradient
- 5200 X 7.5 ft obstacle
- 36 ft obstacle
- 81 ft obstacle
- Star symbol indicating a specific point of interest

CATEGORY	A	B	C	D
① CIRCLING	1260-1	527 (600-1)	1380-1¾ 647 (700-1¾)	NA

SC-1, 30 DEC 2021 to 27 JAN 2022

SC-1, 30 DEC 2021 to 27 JAN 2022