

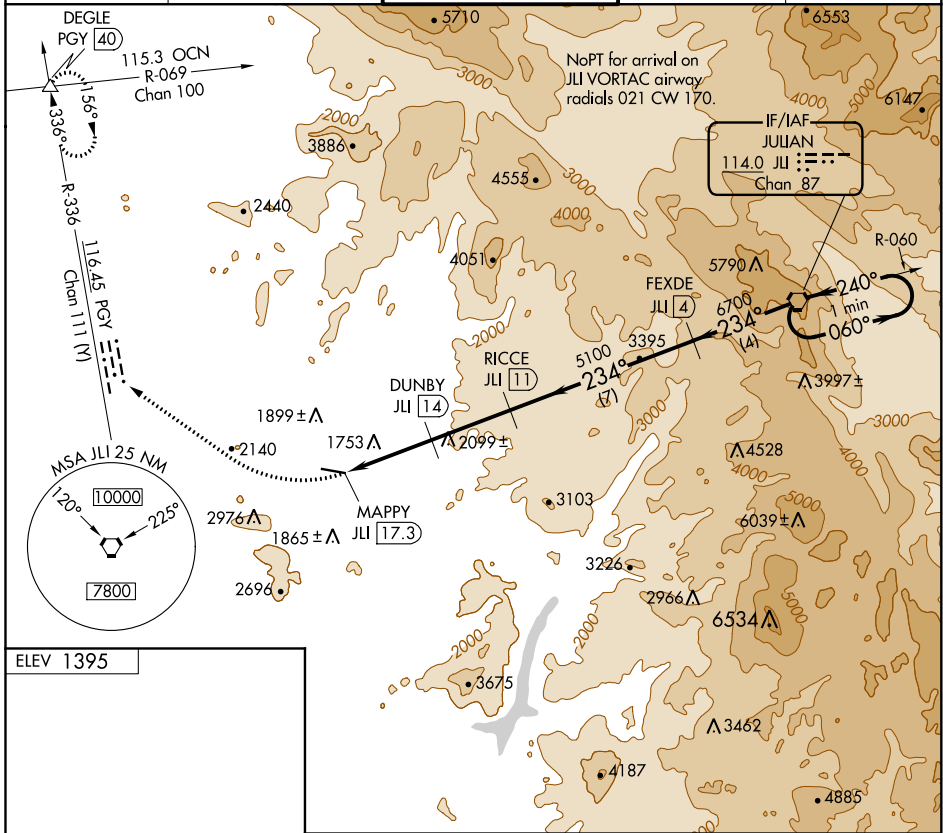
VORTAC JLI <b>114.0</b> Chan 87	APP CRS <b>234°</b>	Rwy Idg TDZE Apt Elev <b>1395</b>	<b>N/A</b> <b>N/A</b>
---------------------------------------	------------------------	---	--------------------------

# VOR/DME-A

RAMONA (RNM)

<p><b>⚠</b> Circling NA north of Rwy 9-27.  <b>⚠</b> When local altimeter setting not received, use Gillespie Fld altimeter setting and increase all MDA 180 feet.</p>	<p>MISSED APPROACH: Climbing right turn to 5000 via heading 290° and PGY VORTAC R-336 to DEGLE/PGY 40 DME and hold.</p>
--	---

ATIS <b>132.025</b>	SOCAL APP CON <b>132.2 269.1</b>	<b>RAMONA TOWER ★</b> <b>119.875 (CTAF) ①</b>	GND CON <b>121.65</b>	UNICOM <b>122.95</b>
------------------------	-------------------------------------	--	--------------------------	-------------------------



SW-3, 30 DEC 2021 to 27 JAN 2022

SW-3, 30 DEC 2021 to 27 JAN 2022

ELEV 1395

REIL Rwy 27 ①  
MIRL Rwy 9-27 ①

5000	PGY R-336	DEGLE	One Minute Holding Pattern	
		JLI VORTAC		
CATEGORY	A	B	C	D
CIRCLING	2580-1¼ 1185 (1200-1¼)	2580-1½ 1185 (1200-1½)	3180-3 1785 (1800-3)	NA