

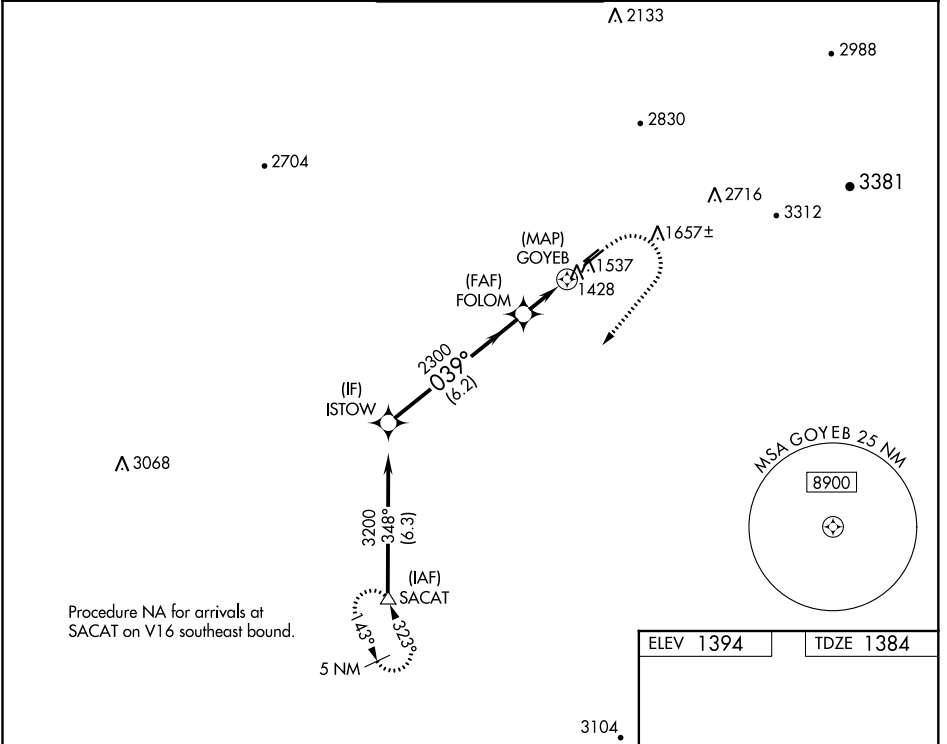
WAAS CH 90525 W04B	APP CRS 039°	Rwy Idg TDZE Apt Elev	5100 1384 1394
--	------------------------	-----------------------------	---

RNAV (GPS) RWY 4R

FALCON FLD (F'F'Z)

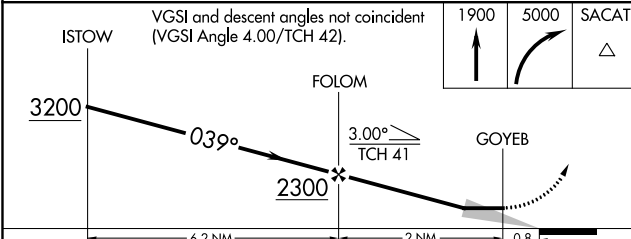
RNP APCH.	<p>⚠ Circling to Rwy 22L, 22R NA at night. Circling NA for Cat C southeast of Rwy 4R and 22L.</p>	<p>MISSED APPROACH: Climb to 1900 then climbing right turn to 5000 direct SACAT and hold, continue climb-in-hold to 5000.</p>
-----------	--	---

ATIS 118.25	PHOENIX APP CON 120.7 239.0	FALCON TOWER * 124.6 (CTAF) 0	GND CON 121.3	UNICOM 122.95
-----------------------	---------------------------------------	---	-------------------------	-------------------------

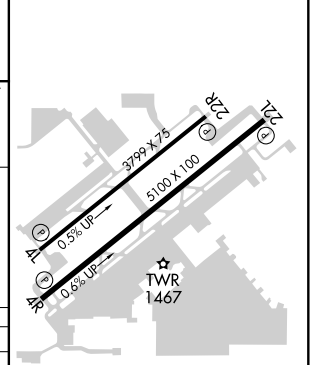


Procedure NA for arrivals at SACAT on V16 southeast bound.

ELEV 1394	TDZE 1384
-----------	-----------



ISTOW	VGSI and descent angles not coincident (VGSI Angle 4.00/TCH 42).			1900	5000	SACAT
3200	FOLOM					
6.2 NM		2 NM		0.8		
CATEGORY	A	B	C	D		
LP MDA	1680-1 296 (300-1)			NA		
LNAV MDA	1800-1	416 (500-1)	1800-1 1/8 416 (500-1 1/8)	NA		
CIRCLING	1860-1 466 (500-1)	1980-1 586 (600-1)	2040-1 3/4 646 (700-1 3/4)	NA		



REIL Rwy 4R, 4L, 22L and 22R
MIRL Rwy 4R-22L 0
MIRL Rwy 4L-22R

SW-4, 30 DEC 2021 to 27 JAN 2022

SW-4, 30 DEC 2021 to 27 JAN 2022