

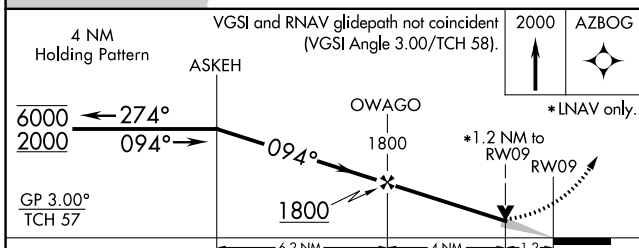
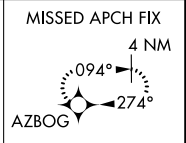
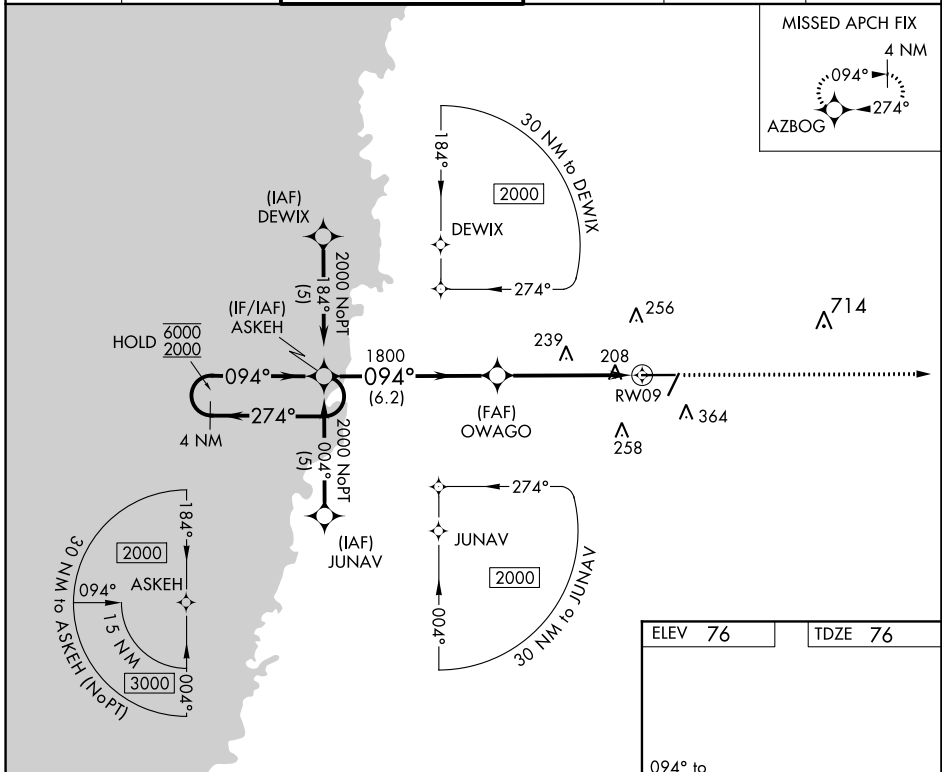
APP CRS	Rwy Idg	<b>7001</b>
<b>094°</b>	TDZE	<b>76</b>
	Apt Elev	<b>76</b>

# RNAV (GPS) RWY 9

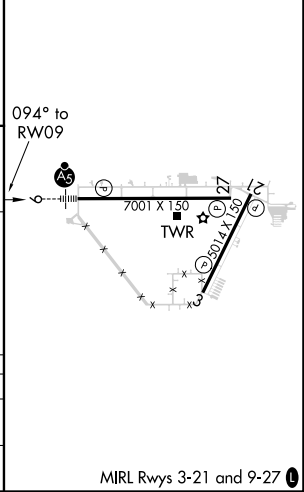
BROOKSVILLE-TAMPA BAY RGNL (BKV)

RNP APCH.		MALSR	MISSED APPROACH: Climb to 2000 direct AZBOG and hold.	
<p><b>▼</b> For uncompensated Baro-VNAV systems, LNAV/VNAV NA below -15°C or above 48°C.  <b>▲</b> For inop ALS increase LNAV Cat D visibility to 1/4 SM.</p>				

ASOS	TAMPA APP CON	BROOKSVILLE TOWER ★	GND CON	CLNC DEL	UNICOM
<b>134.725</b>	<b>125.3 316.05</b>	<b>118.55 (CTAF) 0</b>	<b>121.4</b>	<b>119.125</b>	<b>123.0</b>



ELEV 76	TDZE 76
---------	---------



CATEGORY	A	B	C	D
LNAV/VNAV DA	507-1 431 (500-1)			
LNAV MDA	500-3/4	424 (500-3/4)	500-1 424 (500-1)	

MIRL Rwy's 3-21 and 9-27

SE-3, 30 DEC 2021 to 27 JAN 2022

SE-3, 30 DEC 2021 to 27 JAN 2022