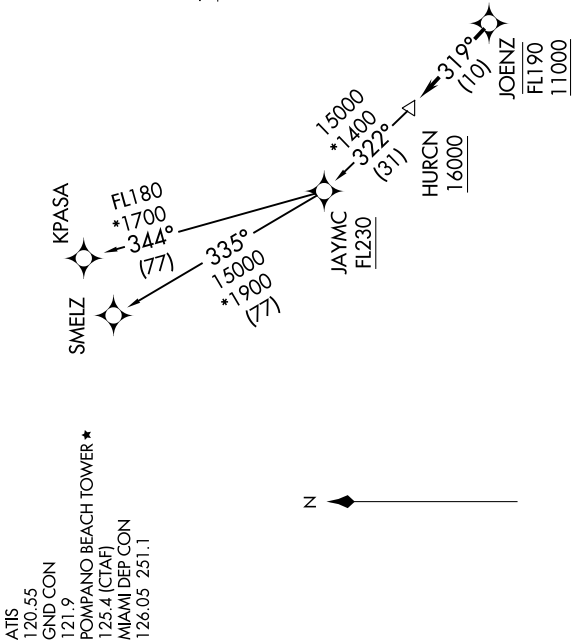


# HURCN ONE DEPARTURE (RNAV)

**TOP ALTITUDE:  
ASSIGNED BY ATC**

**TAKEOFF MINIMUMS**  
Rwys 6, 24, 28, 33: Standard.  
Rwys 10, 15: Standard with minimum climb of 500' per NM to 520.



- NOTE: RNAV 1.
- NOTE: RADAR required.
- NOTE: Jet aircraft only.
- NOTE: DME/DME/IRU or GPS required.
- NOTE: Accelerate to 250K, if unable, advise ATC.

(NARRATIVE ON FOLLOWING PAGE)

NOTE: Chart not to scale.