

# FEALX ONE DEPARTURE (RNAV)

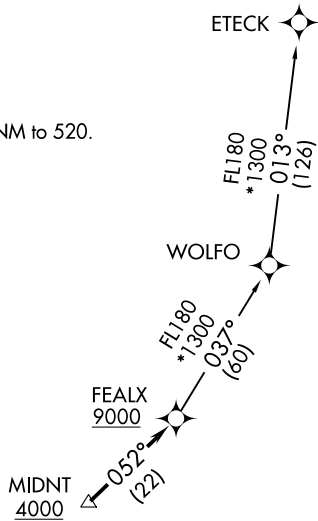
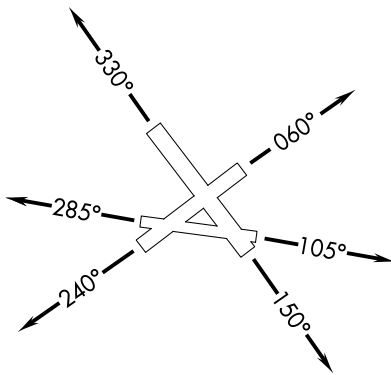
ATIS  
120.55  
GND CON  
121.9  
POMPANO BEACH TOWER ★  
125.4 (CTAF)  
MIAMI DEP CON  
126.05 251.1

**TOP ALTITUDE:  
ASSIGNED BY ATC**

### TAKEOFF MINIMUMS

Rwys 6, 24, 28, 33: Standard.  
Rwys 10, 15: Standard with a minimum climb of 500' per NM to 520.

- NOTE: RNAV 1.
- NOTE: RADAR required.
- NOTE: For jet aircraft only.
- NOTE: DME/DME/IRU or GPS required.
- NOTE: Accelerate to 250K, if unable, advise ATC.



NOTE: Chart not to scale.

SE-3, 30 DEC 2021 to 27 JAN 2022

SE-3, 30 DEC 2021 to 27 JAN 2022

## DEPARTURE ROUTE DESCRIPTION

- TAKEOFF RUNWAY 6: Climb on heading 060° or as assigned for RADAR vectors to cross MIDNT at or above 4000, thence. . . .
- TAKEOFF RUNWAY 10: Climb on heading 105° or as assigned for RADAR vectors to cross MIDNT at or above 4000, thence. . . .
- TAKEOFF RUNWAY 15: Climb on heading 150° or as assigned for RADAR vectors to cross MIDNT at or above 4000, thence. . . .
- TAKEOFF RUNWAY 24: Climb on heading 240° or as assigned for RADAR vectors to cross MIDNT at or above 4000, thence. . . .
- TAKEOFF RUNWAY 28: Climb on heading 285° or as assigned for RADAR vectors to cross MIDNT at or above 4000, thence. . . .
- TAKEOFF RUNWAY 33: Climb on heading 330° or as assigned for RADAR vectors to cross MIDNT at or above 4000, thence. . . .

. . . . on track 052° to cross FEALX at or above 9000. Maintain ATC assigned altitude. Expect clearance to filed altitude within ten minutes after departure.

### ETECK TRANSITION (FEALX1.ETECK)