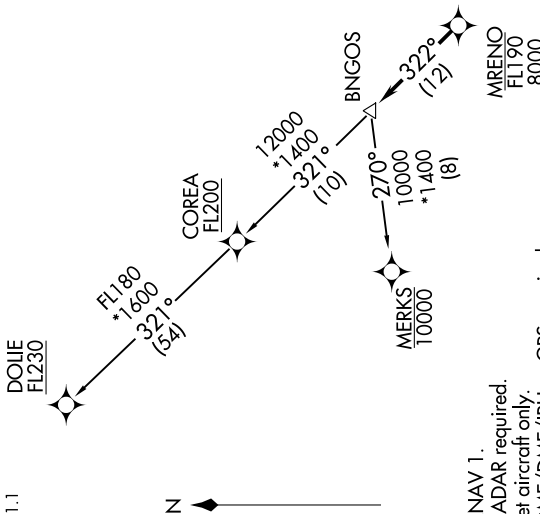


BNGOS ONE DEPARTURE (RNAV)

SE-3, 30 DEC 2021 to 27 JAN 2022

TOP ALTITUDE: ASSIGNED BY ATC

ATIS
120.55
GND CON
121.9
POMPANO BEACH TOWER *
125.4 (CTAF)
MIAMI DEP CON
126.05 251.1



NOTE: RNAV 1.
 NOTE: RADAR required.
 NOTE: Jet aircraft only.
 NOTE: DME/DME/IRU or GPS required.
 NOTE: Accelerate to 250K, if unable, advise ATC.
 NOTE: MERKS TRANSITION ATC assigned only except aircraft landing: MKY, RSW, APF and FMY.

TAKEOFF MINIMUMS
 Rws 6, 24, 28, 33: Standard.
 Rws 10, 15: Standard with minimum climb of 500' per NIM to 520.

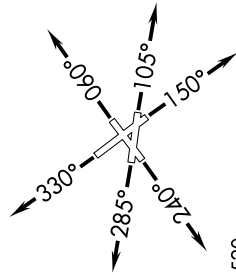
SE-3, 30 DEC 2021 to 27 JAN 2022

DEPARTURE ROUTE DESCRIPTION

TAKEOFF RUNWAY 6: Climb on heading 060° or as assigned for RADAR vectors to cross MRENO between 8000 and FL190, thence...
TAKEOFF RUNWAY 10: Climb on heading 105° or as assigned for RADAR vectors to cross MRENO between 8000 and FL190, thence...
TAKEOFF RUNWAY 15: Climb on heading 150° or as assigned for RADAR vectors to cross MRENO between 8000 and FL190, thence...
TAKEOFF RUNWAY 24: Climb on heading 240° or as assigned for RADAR vectors to cross MRENO between 8000 and FL190, thence...
TAKEOFF RUNWAY 28: Climb on heading 285° or as assigned for RADAR vectors to cross MRENO between 8000 and FL190, thence...
TAKEOFF RUNWAY 33: Climb on heading 330° or as assigned for RADAR vectors to cross MRENO between 8000 and FL190, thence...

...on track 322° to BNGOS, then on TRANSITION, maintain ATC assigned altitude, expect clearance to filed altitude within 10 minutes after departure.

COREA TRANSITION (BNGOS1.COREA)
DOLIE TRANSITION (BNGOS1.DOLIE)
MERKS TRANSITION (BNGOS1.MERKS)



NOTE: Chart not to scale.