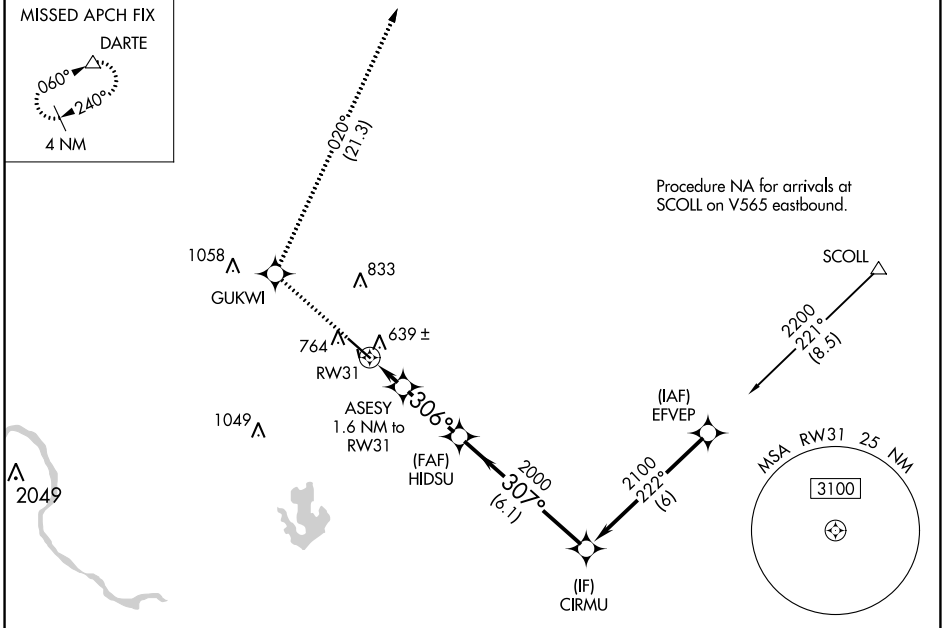


WAAS CH <b>45916</b> <b>W31A</b>	APP CRS <b>306°</b>	Rwy Idg TDZE Apt Elev	<b>6025</b> <b>612</b> <b>620</b>
--	------------------------	-----------------------------	---

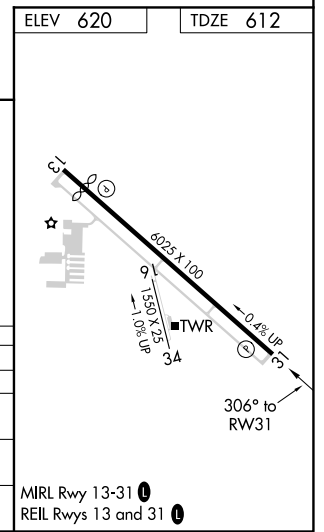
# RNAV (GPS) RWY 31

AUSTIN EXEC (EDC)

RNP APCH.				MISSED APPROACH: Climb to 3500 direct GUKWI and on track 020° to DARTE and hold.	
<p>▼ Circling NA to Rwy 16 and 24. For uncompensated Baro-VNAV systems, LNAV/VNAV NA below -16°C or above 54°C.</p>					
AWOS-3 <b>118.825</b>	AUSTIN APP CON <b>127.225 317.65</b>	EXECUTIVE TOWER★ <b>120.3 (CTAF) 0</b>	GND CON <b>119.45</b>	CLNC DEL <b>126.025</b> (when twr closed)	UNICOM <b>122.975</b>



ELEV 620	TDZE 612			
3500 ↑	GUKWI	tr 020°	DARTE	CIRMU
*LNAV only.				
<p>ASESY 1.6 NM to RW31</p> <p>*0.8 NM to RW31</p> <p>0.8 0.8 2.7 6.1 NM</p> <p>306° 307°</p> <p>2000 2100</p> <p>GP 3.00° TCH 40</p>				
CATEGORY	A	B	C	D
LPV DA		812-3/4	200 (200-3/4)	
LNAV/VNAV DA		909-7/8	297 (300-7/8)	
LNAV MDA	900-1 288 (300-1)		900-7/8 288 (300-7/8)	
CIRCLING	1140-1	1160-1	1280-1 3/4	1280-2
	520 (600-1)	540 (600-1)	660 (700-1 3/4)	660 (700-2)



SC-3, 30 DEC 2021 to 27 JAN 2022

SC-3, 30 DEC 2021 to 27 JAN 2022