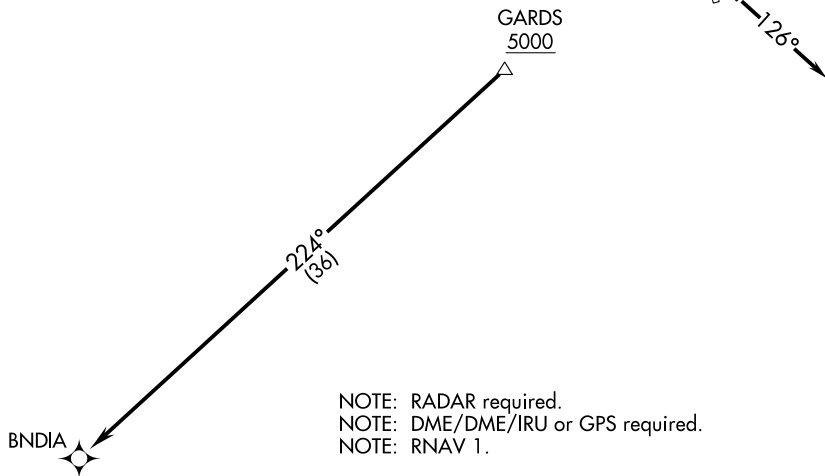


# BNDIA THREE DEPARTURE (RNAV)

AWOS-3  
 118.825  
 CLNC DEL  
 126.025 (when twr closed)  
 EXECUTIVE TOWER ★  
 120.3 (CTAF)  
 UNICOM  
 122.975  
 AUSTIN DEP CON  
 127.225 317.65

**TOP ALTITUDE:  
 ASSIGNED BY ATC**



TAKEOFF MINIMUMS:  
 Rwys 16, 34: NA-Environmental.  
 Rwys 13, 31: Standard.

NOTE: Chart not to scale.

## DEPARTURE ROUTE DESCRIPTION

TAKEOFF RUNWAY 13: Climb on heading 126° or as assigned by ATC for vectors to cross GARDS at or above 5000, thence. . . .

TAKEOFF RUNWAY 31: Climb on heading 306° or as assigned by ATC for vectors to cross GARDS at or above 5000, thence. . . .

. . . .on track 224° to BNDIA. Maintain altitude assigned by ATC. Expect filed altitude 10 minutes after departure.