

WAAS CH <b>86805</b> <b>W36A</b>	APP CRS <b>002°</b>	Rwy ldg <b>4999</b> TDZE <b>417</b> Apt Elev <b>418</b>
--	------------------------	---

# RNAV (GPS) RWY 36

PERRY-HOUSTON COUNTY (PXE)

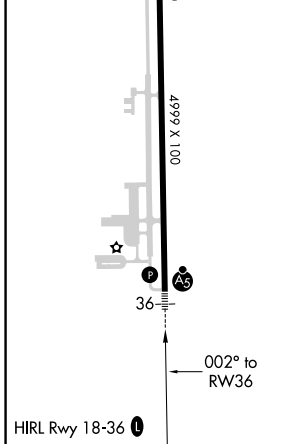
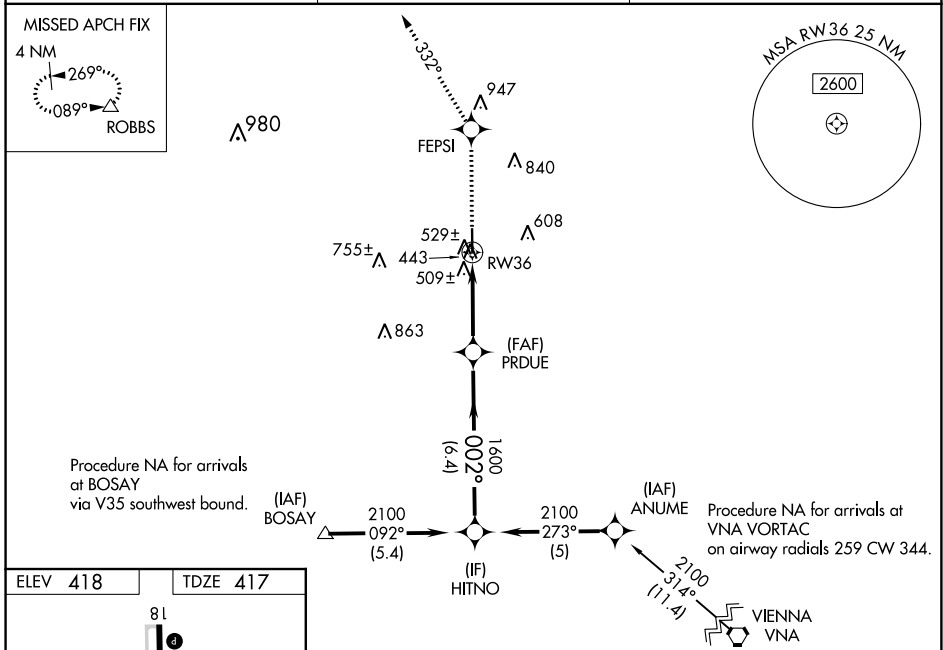
**NA** Baro-VNAV NA when using Macon altimeter setting. For uncompensated Baro-VNAV systems, LNAV/VNAV NA below -15°C (5°F) or above 47°C (116°F). DME/DME RNP-0.3 NA. Visibility reduction by helicopters NA. VDP NA when using Macon altimeter setting. When local altimeter setting not received use Macon altimeter setting and increase all DA 38 feet and all MDA 40 feet. For inoperative MALSR, increase LNAV all Cats visibility ¼ mile. For inoperative MALSR, when using Macon altimeter setting, increase LNAV Cat C visibility to 1¼.

MALSR

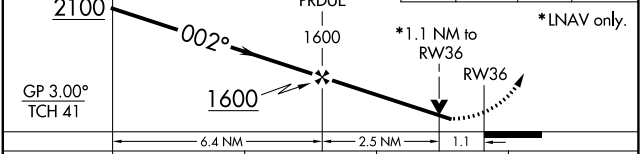


**MISSED APPROACH:**  
Climb to 2500 direct FEPSI and on track 332° to ROBBS and hold.

AWOS-3 <b>123.825</b>	ATLANTA APP CON ★ <b>124.2 279.6</b>	UNICOM <b>122.725(CTAF) 0</b>
--------------------------	---	----------------------------------



Procedure Turn NA	HITNO	VGSI and RNAV glidepath not coincident (VGSI Angle 3.00/TCH 30).	2500	FEPSI	tr 332°	ROBBS
-------------------	-------	--	------	-------	---------	-------



CATEGORY	A	B	C	D
LPV DA	745-¾		328 (400-¾)	
LNAV/VNAV DA	806-1		389 (400-1)	
LNAV MDA	780-¾		363 (400-¾)	
CIRCLING	860-1 442 (500-1)	880-1 462 (500-1)	960-1½ 542 (600-1½)	980-2 562 (600-2)

SE-4, 30 DEC 2021 to 27 JAN 2022

SE-4, 30 DEC 2021 to 27 JAN 2022