

WAAS CH 97441 W13A	APP CRS 126°	Rwy Idg TDZE Apt Elev	8600 7057 7095
--	------------------------	-----------------------------	---

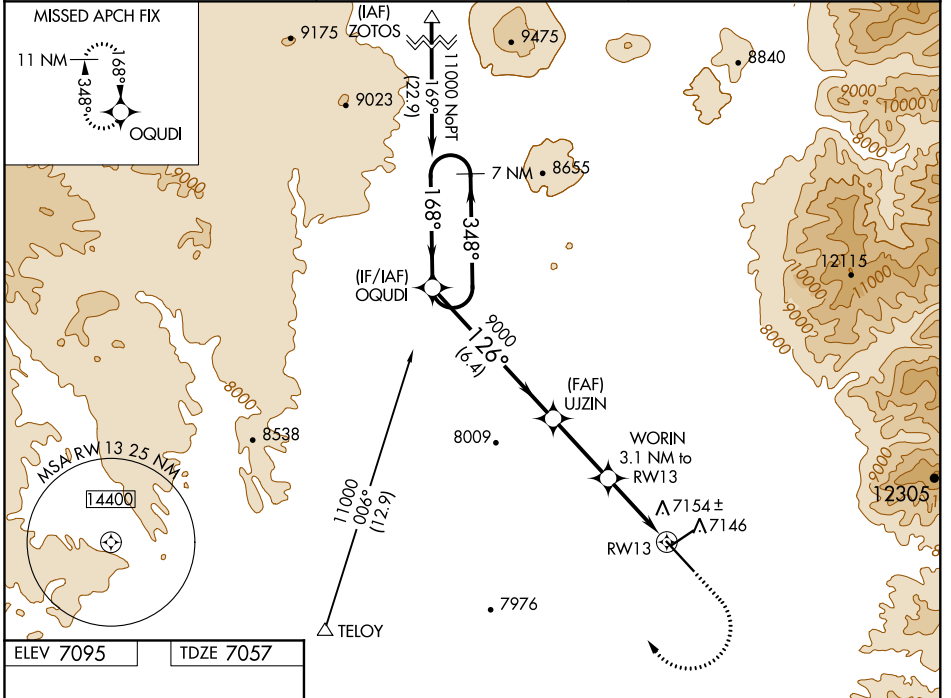
RNAV (GPS) RWY 13

TAOS RGNL (SKX)

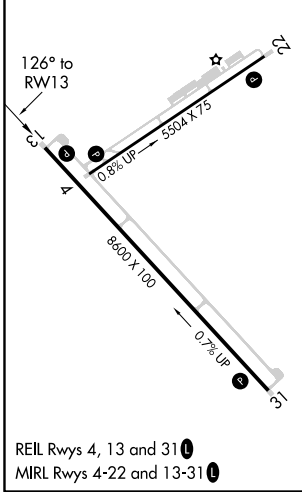
⚠ For uncompensated Baro-VNAV systems, LNAV/VNAV NA below -29°C (-20°F) or above 47°C (118°F).
DME/DME RNP-0.3 NA.

⚠ MISSED APPROACH: (Do not exceed 250K until OQUDI)
Climb to 7800 then climbing right turn to 12400 direct OQUDI and hold, continue climb-in-hold to 12400.

AWOS-3PT 132.975	ALBUQUERQUE CENTER 132.8 346.35	UNICOM 122.8 (CTAF) 0
----------------------------	---	---------------------------------



ELEV 7095	TDZE 7057
-----------	-----------



	7 NM Holding Pattern	OQUDI	UJZIN	WORIN	RW13
	11000	9000	9000	9000	9000
	348°	168°	126°	126°	126°
	GP 3.00°	TCH 37	*8060	*1.1 NM to RW13	*1.1 NM to RW13
	6.4 NM	2.9 NM	2 NM	1.1 NM	1.1 NM
CATEGORY	A	B	C	D	
LPV DA		7258- ³ / ₄	200 (200- ³ / ₄)		
LNAV/VNAV DA		7346- ⁷ / ₈	288 (300- ⁷ / ₈)		
LNAV MDA		7420-1	362 (400-1)		
C CIRCLING	7600-1 505 (600-1)	7640-1 545 (600-1)	7920-2½ 825 (900-2½)	8020-3 925 (1000-3)	

SW-1, 30 DEC 2021 to 27 JAN 2022

SW-1, 30 DEC 2021 to 27 JAN 2022